

# TENNSCO WORKBENCHES & ACCESSORIES



Shown with  
Hardwood Top and  
Adjustable Height Legs

Shown with Steel Top,  
Fixed Height Legs and Caster Kit



Plastic Laminate Top



Compressed Wood Top

ADJUSTABLE HEIGHT WORKBENCHES				
Product No.	Top Size W x D	Height	Wt. (lbs.)	Price Ea.
<b>STEEL TOP</b>				
HWBA-1-3048S	48 x 30"	29 3/8-36 1/2"	98	\$183.51
HWBA-1-3060S	60 x 30"	29 3/8-36 1/2"	110	193.67
HWBA-1-3072S	72 x 30"	29 3/8-36 1/2"	127	214.56
HWBA-1-3672S	72 x 36"	29 3/8-36 1/2"	141	242.23
HWBA-1-3096S	96 x 30"	29 3/8-36 1/2"	147	308.30
HWBA-1-3696S	96 x 36"	29 3/8-36 1/2"	173	341.61
<b>PLASTIC LAMINATE TOP</b>				
HWBA-1-3060P	60 x 30"	29 3/8-36 1/2"	130	242.23
HWBA-1-3072P	72 x 30"	29 3/8-36 1/2"	145	273.29
HWBA-1-3672P	72 x 36"	29 3/8-36 1/2"	188	319.59
HWBA-1-3096P	96 x 30"	29 3/8-36 1/2"	165	389.60
HWBA-1-3696P	96 x 36"	29 3/8-36 1/2"	196	449.46
<b>COMPRESSED WOOD TOP</b>				
HWBA-1-3060C	60 x 30"	29 3/8-37 1/2"	159	250.14
HWBA-1-3072C	72 x 30"	29 3/8-37 1/2"	181	284.02
HWBA-1-3672C	72 x 36"	29 3/8-37 1/2"	212	319.59
HWBA-1-3096C	96 x 30"	29 3/8-37 1/2"	203	408.24
HWBA-1-3696C	96 x 36"	29 3/8-37 1/2"	249	501.97
<b>HARDWOOD BUTCHER BLOCK TOP</b>				
HWBA-1-3060W	60 x 30"	29 3/8-37 1/2"	131	303.78
HWBA-1-3072W	72 x 30"	29 3/8-37 1/2"	148	349.51
HWBA-1-3672W	72 x 36"	29 3/8-37 1/2"	168	402.59
HWBA-1-3096W	96 x 30"	29 3/8-37 1/2"	159	486.16
HWBA-1-3696W	96 x 36"	29 3/8-37 1/2"	188	701.85

FIXED HEIGHT WORKBENCHES				
Product No.	Top Size W x D	Height	Wt. (lbs.)	Price Ea.
<b>STEEL TOP</b>				
HWB-1-3048S	48 x 30"	33 1/2"	91	\$173.35
HWB-1-3060S	60 x 30"	33 1/2"	103	184.07
HWB-1-3072S	72 x 30"	33 1/2"	120	204.40
HWB-1-3672S	72 x 36"	33 1/2"	134	228.68
HWB-1-3096S	96 x 30"	33 1/2"	144	293.05
HWB-1-3696S	96 x 36"	33 1/2"	160	321.28
<b>PLASTIC LAMINATE TOP</b>				
HWB-1-3060P	60 x 30"	33 1/2"	123	232.07
HWB-1-3072P	72 x 30"	33 1/2"	139	263.12
HWB-1-3672P	72 x 36"	33 1/2"	182	306.04
HWB-1-3096P	96 x 30"	33 1/2"	161	374.36
HWB-1-3696P	96 x 36"	33 1/2"	193	429.13
<b>COMPRESSED WOOD TOP</b>				
HWB-1-3060C	60 x 30"	33 1/2"	152	239.97
HWB-1-3072C	72 x 30"	33 1/2"	175	273.85
HWB-1-3672C	72 x 36"	33 1/2"	206	306.04
HWB-1-3096C	96 x 30"	33 1/2"	199	391.30
HWB-1-3696C	96 x 36"	33 1/2"	238	453.41
<b>HARDWOOD BUTCHER BLOCK TOP</b>				
HWB-1-3060W	60 x 30"	33 1/2"	124	293.61
HWB-1-3072W	72 x 30"	33 1/2"	142	339.35
HWB-1-3672W	72 x 36"	33 1/2"	162	389.04
HWB-1-3096W	96 x 30"	33 1/2"	155	470.91
HWB-1-3696W	96 x 36"	33 1/2"	185	681.52

ACCESSORIES				
Product No.	Top Size W x D	Height	Wt. (lbs.)	Price Ea.
<b>RISERS WITH END SUPPORTS</b>				
HR-1048	48 x 10 1/2"	12"	19	43.48
HR-1060	60 x 10 1/2"	12"	21	45.17
HR-1072	72 x 10 1/2"	12"	24	49.69
HR-1096	96 x 10 1/2"	12"	32	76.79
<b>SIDE AND BACK RAIL KITS</b>				
HSB-3048S	48 x 30"	3"	13	24.28
HSB-3060S	60 x 30"	3"	14	27.67
HSB-3072S	72 x 30"	3"	16	29.36
HSB-3096S	96 x 30"	3"	19	30.49
HSB-3672S	72 x 36"	3"	17	37.83
HSB-3696S	96 x 36"	3"	20	38.96
<b>LOWER SHELVES</b>				
HS-48	48 x 14"		16	31.06
HS-60	60 x 14"		20	36.70
HS-72	72 x 14"		23	42.35
HS-96	96 x 14"		31	54.21
<b>LOCKING DRAWERS</b>				
HWBD-1LMG	15 x 18"	8 1/2"	20	47.43
HWBD-25	25 x 22"	6"	20	103.33
<b>CASTER KIT</b>				
HWBCK-3036	-	-	16	49.12

## Heavy-Duty INDUSTRIAL WORKBENCHES

- Industrial grade workbenches with a choice of tops to meet individual needs.
- Basic bench consists of a top, a pair of legs assemblies and a stringer.
- Available with adjustable height legs or fixed height legs.

Benches feature rigid construction with 13-gauge welded leg assemblies tied together with a stringer. Feet are pre-punched for floor anchoring. Each leg has a knockout for a duplex outlet. Optional risers, side and back rails, lower shelves and drawer are available for customizing workbenches to specific tasks. All units come unassembled. Wood tops are pre-drilled for easier assembly. Medium Gray powder coated finish. FOB Shipping Point.

Steel Top Workbench...12 ga. steel top with reinforced end channels.

Plastic Laminate Top Workbenches...high pressure laminate top and edges - particleboard core. White.

Compressed Wood Top Workbenches...tempered hardboard top and bottom, laminated compressed wood core.

Hardwood Butcher Block Top Workbenches...hardwood with butcher block construction to resist warping.

## Accessories

Risers With End Supports...adds 12" in overall height to the workbench. May be double stacked. 16 ga. steel. Shipped unassembled.

Side and Back Rail Kits...prevents objects from falling off sides and back.

Lower Shelves...16 ga. steel shelf with back stop.

Locking Drawer...steel drawers operate smoothly on ball bearing rollers. Units can be bolted together for additional storage. 15" wide drawer has a divider and a removable tray.

Caster Kit...adds mobility to any workbench up to 72" wide. Kit includes four 5" diameter casters (two fixed, two swivel with brakes). Increases height by 6 1/2".



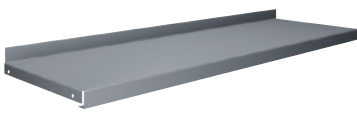
Riser



Side and Back Rail Kit



25" Wide Locking Drawer



Lower Shelf



15" Wide Locking Drawer



Caster Kit