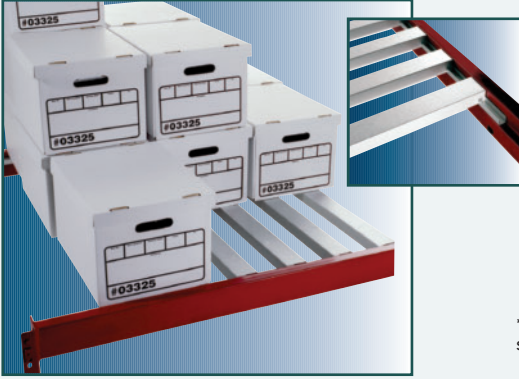


# RACK DECK, WIRE DECK & GRATING

**IMPORTANT: MANY MUNICIPALITIES ENFORCE FIRE CODES THAT REQUIRE 50% OPEN SHELF AREA.**



## Snap Shelf - 50% Open Area: Exceeds Fire Code Requirements



- Open decking stores cartons and boxes.
- Install on all pallet rack shelves.
- Smooth bright galvanized steel surface.
- Cartons will slide easily with less friction.

Each shelf level contains a pair of full-length end channels that are to be tek-fastened in the 1 1/2" deep step-down ledges of your pallet rack beams. The carton support members snap into notches in the end channels. Standard spacing has 2 1/2" wide supports with 4" spaces between supports. Other spacing and capacities are available – call for details. Made in USA. FOB Shipping Point.

\*State the dimension between the step down ledges when ordering



Product No.	SNAP SHELF - 50% OPEN AREA Size D x W*	**Cap. (lbs.) Per Sq. Ft.	Wt. (lbs.)	Price Ea.
HSS-101	36 x 96"	200+	26	\$48.01
HSS-102	36 x 108"	200+	30	54.76
HSS-103	36 x 120"	200+	33	61.58
HSS-104	36 x 144"	200+	40	74.53
HSS-201	42 x 96"	200+	31	55.01
HSS-202	42 x 108"	200+	35	63.00
HSS-203	42 x 120"	200+	39	70.61
HSS-204	42 x 144"	200+	46	86.21
HSS-301	48 x 96"	194	35	62.32
HSS-302	48 x 108"	194	40	70.74
HSS-303	48 x 120"	194	44	80.01
HSS-304	48 x 144"	194	53	96.84

\*May be cut-to-size to fit your exact requirements.  
\*\*Capacities based on uniform distributed loads. Minimum order \$2,500.00

## POWERDECK™

### Solid Steel Rack Deck



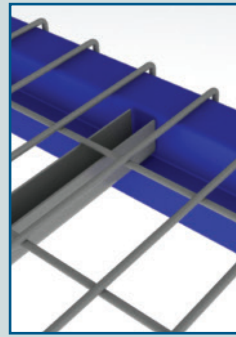
- Low cost, smooth surface.
- Made in USA.

Safely supports archive boxes, heavy packages, parts and supplies. Smooth surface allows easy sliding without damage or splinters. Capacities based on evenly distributed loads. Fire resistant. 50% open deck available -- call for prices. Made in USA. FOB Shipping Point.

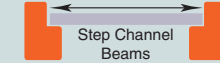
Product No.	SOLID STEEL RACK DECK Size D x W*	**Cap. (lbs.) Per Sq. Ft.	Wt. (lbs.)	Price Ea.
HPSD36096	36 x 96"	200	41	\$45.33
HPSD36108	36 x 108"	200	46	48.00
HPSD36120	36 x 120"	200	51	53.33
HPSD36144	36 x 144"	200	61	64.00
HPSD42096	42 x 96"	175	48	52.89
HPSD42108	42 x 108"	175	54	56.00
HPSD42120	42 x 120"	175	60	62.22
HPSD42144	42 x 144"	175	71	74.67
HPSD48096	48 x 96"	150	54	60.44
HPSD48108	48 x 108"	150	61	64.00
HPSD48120	48 x 120"	150	68	71.11
HPSD48144	48 x 144"	150	82	85.33

\*May be cut-to-size to fit your exact requirements.  
\*\*Capacities based on uniform distributed loads.

\*State the dimension between the step down ledges when ordering.



Step Channel (above)



\*State the dimension between the step down ledges when ordering. Required for step channel style.

## Pallet Rack Wire Decks

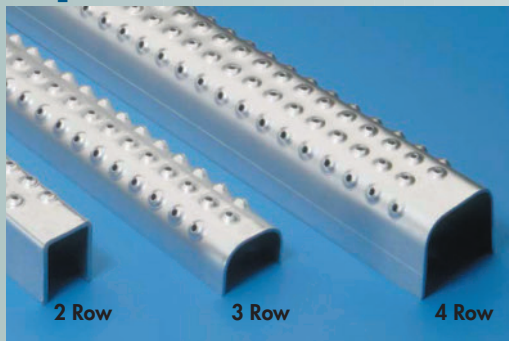
- Step Channels fit in Step-down beams.
- Load capacities are based on evenly distributed loads.

Step Channel Decks have (3) standard support channels that fit into the step-down ledges of the pallet rack beams and are "R" Marked and will self support load capacity. These channels are cut-frame depth less 2X the beam crown size + 1/2" and are 1 1/2" high. Made in USA. FOB Shipping Point.

Product No.	WIRE DECKS WITH STEP CHANNELS Size D x W	Cap (lbs.)	Wt. (lbs.)	Price Ea.
HPWD125L-SC	36 x 46"	2200	21	\$18.70
HPWD112L-SC	42 x 46"	2200	24	19.20
HPWD112-SC	42 x 46"	2500	24	21.60
HPWD113-SC	42 x 52"	2500	26	23.54
HPWD114-SC*	42 x 58"	2500	31	24.42
HPWD115-SC	48 x 46"	2500	27	23.95
HPWD116-SC	48 x 52"	2500	33	27.95
HPWD117-SC	48 x 58"	2500	36	35.95

\*Wire Decks 58"W are supplied with (4) support channels.

## Slip-Resistant Ladder Rungs



These ladder rungs provide a slip-resistant surface where vertical climbing is necessary. Made in channel shapes, these rungs can be used as covers for existing ladder rungs or welded directly to uprights as steps. Rungs are 48 3/4" long, or may be cut to length to meet your specifications. Select Hot Rolled Pickled & Oiled, Type 304 Stainless Steel, or Aluminum. Also available in Galvanized. Meets OSHA requirements. Made in USA. FOB Shipping Point

Product No.	Description	Gauge	Finish	Minimum Order Qty.	Wt. (lbs.)	Price Ea.
HRG401	2 Row	13	Hot Rolled Pickled & Oiled	20	4	\$11.38
HRG402	3 Row	13	Hot Rolled Pickled & Oiled	20	4	9.78
HRG403	4 Row	13	Hot Rolled Pickled & Oiled	15	7	13.87
HRG404	3 Row	16	Stainless	10	3	23.64
HRG405	4 Row	16	Stainless	8	5	29.69
HRG406	3 Row	.125	Aluminum	15	2	15.29
HRG407	4 Row	.125	Aluminum	10	3	22.40

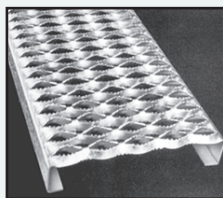
Minimum Order \$85.00

## Power Grip Safety Grating

Ideal for...

- Elevated walkways • Outdoor catwalks
- Vehicle safety steps • Ramps
- Revitalized floors -- 10' & 12'
- Reconditioned stairs • Platforms

Now provide worry-free, non-slip safety with galvanized, rust-resistant steel safety grating. Strong grating has thousands of individual struts that resist slips in all directions. Unique design prevents the build-up of slippery greases chips, fluids, mud or ice ... particles fall through and out of the way. No corners or welds to gather debris... grating is practically self cleaning. Resilient walking surface helps reduce fatigue and provides sure-footed confidence for employees. In high places, see-through grating gives workmen a definite visual reference. Features high load capacity, minimum deflection, lightweight and long life. Easy to handle and simple to install. Panels match exactly for fast assembly. UL approved. FOB Shipping Point.



Product No.	Width	Gauge	Channel Depth	Wt. (lbs.)	Price Per 10' length	Wt. (lbs.)	Price Per 12' length
HGS-108	7"	14	1.5"	30	\$51.56	36	\$61.87
HGS-109	7"	14	2"	32	55.82	39	66.98
HGS-112	7"	12	2"	45	81.24	54	97.49
HGS-115	9 1/2"	14	1.5"	36	62.58	44	75.10
HGS-116	9 1/2"	14	2"	38	66.84	46	80.21
HGS-119	9 1/2"	12	2"	54	97.78	65	117.34
HGS-122	11 3/4"	14	1.5"	42	72.18	51	86.62
HGS-123	11 3/4"	14	2"	44	76.27	53	91.52
HGS-126	11 3/4"	12	2"	62	111.82	75	134.18
HGS-127	18 3/4"	14	1.5"	61	107.20	74	128.64
HGS-128	18 3/4"	14	2"	63	113.27	76	135.93
HGS-129	18 3/4"	12	2"	89	157.51	107	189.01
HGS-130*	24"	14	2"	74	129.24	89	155.09
HGS-131*	24"	12	2"	104	190.22	125	228.26

Minimum Order \$350.00 - (\* Additional Standard Channel Depth Available - Call For Pricing. Aluminum and Stainless Steel available -- Call for pricing and availability.