

# FITTINGS W/ DRESSER® EFV'S



## CON-STAB ID SEAL® ELIMINATORS with Dresser® Medium Capacity Excess Flow Valves

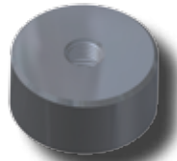
DRESSER® MEDIUM CAPACITY EXCESS FLOW VALVES					
EFV SIZE	OUTLET (PE SIZE)	WALL	MAIN SIZE	PART NUMBER	PART NUMBER
				5864 1/2" CR PUNCH	5764 13/16" CR PUNCH
DRESSER® MEDIUM CAPACITY	1/2" CTS (5/8" OD)	.090	1 1/4"	5864-15-1604-78	N/A
			2"	5864-17-1604-78	5764-17-1604-78
			3"	5864-19-1604-78	5764-19-1604-78
			4"	5864-21-1604-78	5764-21-1604-78
			6"	5864-24-1604-78	5764-24-1604-78
			8"	N/A	5764-26-1604-78
	3/4" CTS (7/8" OD)	.090	1 1/4"	5864-15-1606-78	N/A
			2"	5864-17-1606-78	5764-17-1606-78
			3"	5864-19-1606-78	5764-19-1606-78
			4"	5864-21-1606-78	5764-21-1606-78
			6"	5864-24-1606-78	5764-24-1606-78
			8"	N/A	5764-26-1606-78
	1" CTS (1 1/8" OD)	.099/.101	1 1/4"	5864-15-1608-78	N/A
			2"	5864-17-1608-78	5764-17-1608-78
			3"	5864-19-1608-78	5764-19-1608-78
			4"	5864-21-1608-78	5764-21-1608-78
			6"	5864-24-1608-78	5764-24-1608-78
			8"	N/A	5764-26-1608-78
		.090	1 1/4"	5864-15-1608-79	N/A
			2"	5864-17-1608-79	5764-17-1608-79
			3"	5864-19-1608-79	5764-19-1608-79
			4"	5864-21-1608-79	5764-21-1608-79
			6"	5864-24-1608-79	5764-24-1608-79
			8"	N/A	5764-26-1608-79
	1/2" IPS	SDR-9.33 (.090)	1 1/4"	5864-15-1612-78	N/A
			2"	5864-17-1612-78	5764-17-1612-78
			3"	5864-19-1612-78	5764-19-1612-78
			4"	5864-21-1612-78	5764-21-1612-78
			6"	5864-24-1612-78	5764-24-1612-78
			8"	N/A	5764-26-1612-78
	3/4" IPS	SDR-11 (.095)	1 1/4"	5864-15-1613-78	N/A
			2"	5864-17-1613-78	5764-17-1613-78
			3"	5864-19-1613-78	5764-19-1613-78
			4"	5864-21-1613-78	5764-21-1613-78
			6"	5864-24-1613-78	5764-24-1613-78
			8"	N/A	5764-26-1613-78
1" IPS	SDR-11 (.119)	1 1/4"	5864-15-1614-78	N/A	
		2"	5864-17-1614-78	5764-17-1614-78	
		3"	5864-19-1614-78	5764-19-1614-78	
		4"	5864-21-1614-78	5764-21-1614-78	
		6"	5864-24-1614-78	5764-24-1614-78	
		8"	N/A	5764-26-1614-78	



- For sizes not listed, contact Continental Industries.
- Con-Stab ID Seal® Eliminators rated at 125 psig.
- Recommended accessories;
  - Continental's Bladed Chamfering Tool. See page 28 for size combinations available.
  - 33-5505-00 ~ Combination Tapping Tool & Saddle Bolt "T" Wrench for 1 1/4" thru 6" IPS Eliminators
  - 33-5505-01 ~ Combination Tapping Tool & Saddle Bolt "T" Wrench for 3" thru 8" IPS Eliminators
  - 33-5508-00 ~ Test Plug Cap for Eliminator Saddles
- For Protective Sleeves, see page 29.



33-5505-00 & 33-5505-01 ~ Combination Tapping Tool & Saddle Bolt "T" Wrench



33-5508-00 ~ Test Plug Cap for Eliminator Saddles with 1/4" FPT for attachment of quick connect coupling

