

Fig. 261

Extension Pipe or Riser Clamp

Size Range: 3/4" through 24"

Material: Carbon steel

Finish: Plain, Galvanized or Epoxy coated

Service: For support of stationary steel pipe risers, cast iron pipe or conduit. This product is not intended for use with hanger rods. For this application refer to Fig. 40 Riser Clamp, page 49.

Maximum Temperature: Plain 650° F, Galvanized and Epoxy 450° F

Approvals: Complies with Federal Specification A-A-1192A (Type 8) WW-H-171-E (Type 8), ANSI/MSS SP-69 and MSS SP-58 (Type 8). UL, ULC Listed (Sizes 1 1/2" - 8").

Installation: Clamp is fitted and bolted preferably below a coupling, hub or welded lugs on steel pipe. Bolt torques should be per industry standards (see page 257). Clamp is designed for standard steel pipe O.D. and this must be considered in sizing the riser for other types of piping.

Ordering: Specify pipe size, figure number, name and finish.



Note: Refer to Technical Data Section for cast iron soil pipe data.

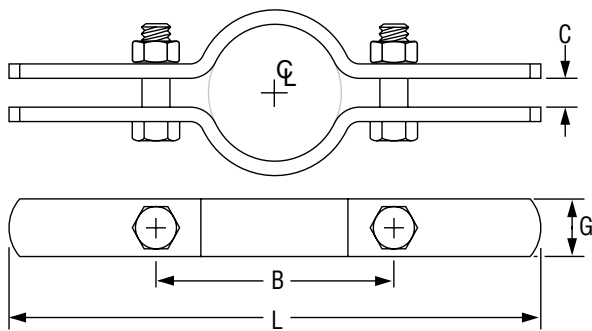


FIG. 261: LOADS (LBS) • WEIGHT (LBS) • DIMENSIONS (IN) • TORQUE (FT-LBS)

Pipe Size	Max Load	Weight	L	G Width	B	C	Bolt Diameter	Torque Values	
3/4	220	1.1	8 7/8	1	2 7/8	3/8	3/8	21	
1		1.1			3 1/8				
1 1/4	1.6	3 1/2							
1 1/2	250	1.6	10 1/4		3 7/8	1/2	7/16		32
2		1.7			4 1/4				
2 1/2	400	1.9	11 1/4		4 3/4	1/2	1/2		46
3	500	1.9	11 3/8	5 1/2					
3 1/2	600	2.3	12 7/8	6 1/2					
4	750	2.4		7	5/8	5/8	100		
5	1,500	3.6	13 3/4	8					
6	1,600	4.0	14 3/4	2	9	3/4	150		
8	2,500	7.6	18 1/2		12				
10		11.1	20 1/4	2 1/2	13 3/4	1	7/8	190	
12	16.5	22 3/4	15 3/4						
14	2,700	17.7	24	3	17 1/4	3/4	150		
16		30.4	26		19 3/4				
18	2,900	33.8	28	3	21 3/4	1	190		
20		35.0	30		23 3/4				
24	3,200	82.0	36 3/4		30			190	