

## Fig. 192

### Adjustable Pipe Saddle

**Size Range:** 2" through 12"

**Material:** Carbon steel

**Finish:** Plain or Galvanized

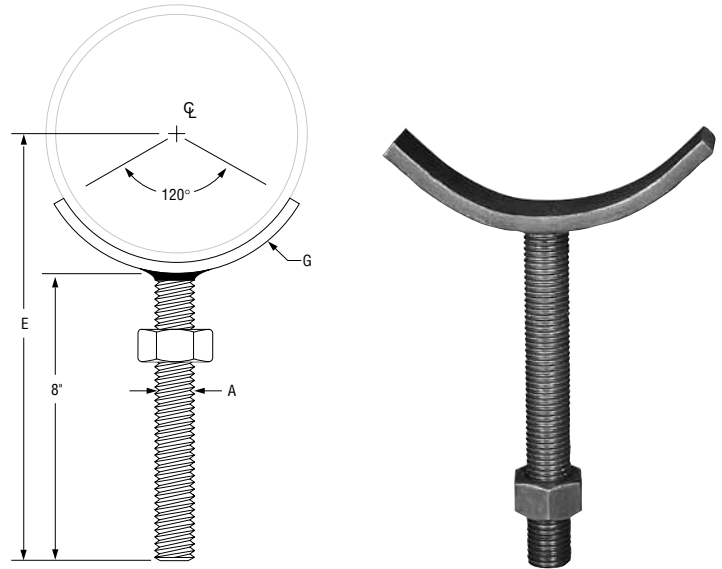
**Service:** Stanchion type support for **stationary** pipe where vertical adjustment is required.

**Approvals:** Complies with Federal Specification A-A-1192A (Type 38), ANSI/MSS SP-69 and MSS SP-58 (Type 38).

**Ordering:** Specify pipe size to be supported, figure number, name and finish.

**FIG. 192: WEIGHTS (LBS) • DIMENSIONS (IN)**

Pipe Size	Rod Size A	E	G	Weight
2	5/8	9 <sup>7</sup> / <sub>16</sub>	1/4 x 1	1.0
2 1/2		9 <sup>1</sup> / <sub>16</sub>		1.4
3		10		1.6
3 1/2		10 <sup>1</sup> / <sub>4</sub>		2.6
4	7/8	10 <sup>1</sup> / <sub>2</sub>	1/4 x 1 1/4	3.0
5		11		3.2
6	1	11 <sup>11</sup> / <sub>16</sub>	3/8 x 1 1/2	4.9
8		12 <sup>11</sup> / <sub>16</sub>		6.2
10	1 1/4	13 <sup>3</sup> / <sub>8</sub>	1/2 x 2	10.5
12		14 <sup>7</sup> / <sub>8</sub>		11.8



## Fig. 191

### Adjustable Pipe Saddle with U-Bolt

**Size Range:** 2" through 12"

**Material:** Carbon steel

**Finish:** Plain or Galvanized

**Service:** Stanchion type support where vertical adjustment is required, plus the additional **stability** provided by U-bolt attachment to **stationary** pipe.

**Approvals:** Complies with Federal Specification A-A-1192A (Type 37), ANSI/MSS SP-69 and MSS SP-58 (Type 37).

**Ordering:** Specify pipe size, figure number, name and finish.

**FIG. 191: WEIGHTS (LBS) • DIMENSIONS (IN)**

Pipe Size	Rod Size A	C	E	G	Weight
2	5/8	2 <sup>11</sup> / <sub>16</sub>	9 <sup>7</sup> / <sub>16</sub>	1/4 x 1	1.2
2 1/2		3 <sup>5</sup> / <sub>16</sub>	9 <sup>1</sup> / <sub>16</sub>		1.4
3		3 <sup>15</sup> / <sub>16</sub>	10		1.6
3 1/2		4 <sup>7</sup> / <sub>16</sub>	10 <sup>1</sup> / <sub>4</sub>		2.6
4	7/8	5 <sup>1</sup> / <sub>4</sub>	10 <sup>1</sup> / <sub>2</sub>	1/4 x 1 1/4	3.0
5		6 <sup>1</sup> / <sub>8</sub>	11		3.2
6	1	7 <sup>1</sup> / <sub>4</sub>	11 <sup>11</sup> / <sub>16</sub>	3/8 x 1 1/2	4.9
8		9 <sup>3</sup> / <sub>8</sub>	12 <sup>11</sup> / <sub>16</sub>		6.2
10	1 1/4	11 <sup>1</sup> / <sub>2</sub>	13 <sup>3</sup> / <sub>8</sub>	1/2 x 2	10.5
12		13 <sup>1</sup> / <sub>2</sub>	14 <sup>7</sup> / <sub>8</sub>		11.8

