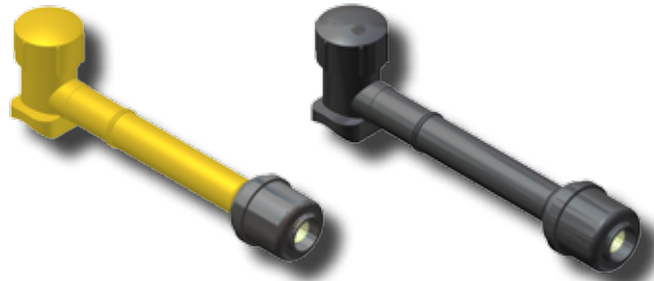




FITTINGS W/ UMAC® EFV'S

CON-STAB ID SEAL® Fusion Saddle Tees with UMAC® Series 700 Excess Flow Valves



UMAC® 700 SERIES EXCESS FLOW VALVES								
EFV SIZE	OUTLET (PE SIZE)	WALL	Main Size	PUNCH SIZE	PART NUMBER (3408/4710) (ROUND BASE)	PART NUMBER (2406) (ROUND BASE)	PART NUMBER (3408/4710) (RECTANGULAR BASE)	PART NUMBER (2406) (RECTANGULAR BASE)
UMAC® SERIES 700	1/2" CTS (5/8" OD)	.090	1 1/4"	.800"	3259-15-3904-72	3369-15-4004-72	3259-15-4104-72	3369-15-4204-72
			2"	.800"	3259-17-3904-72	3369-17-4004-72	3259-17-4104-72	3369-17-4204-72
			3"	.800"	3259-19-3904-72	3369-19-4004-72	3259-19-4104-72	3369-19-4204-72
			4"	.800"	3259-21-3904-72	3369-21-4004-72	3259-21-4104-72	3369-21-4204-72
			6"	.800"	3259-24-3904-72	3369-24-4004-72	3259-24-4104-72	3369-24-4204-72
			8"	.800"	3259-26-3904-72	3369-26-4004-72	3259-26-4104-72	3369-26-4204-72
	3/4" CTS (7/8" OD)	.090	1 1/4"	.800"	3259-15-3906-72	3369-15-4006-72	3259-15-4106-72	3369-15-4206-72
			2"	.800"	3259-17-3906-72	3369-17-4006-72	3259-17-4106-72	3369-17-4206-72
			3"	.800"	3259-19-3906-72	3369-19-4006-72	3259-19-4106-72	3369-19-4206-72
			4"	.800"	3259-21-3906-72	3369-21-4006-72	3259-21-4106-72	3369-21-4206-72
			6"	.800"	3259-24-3906-72	3369-24-4006-72	3259-24-4106-72	3369-24-4206-72
			8"	.800"	3259-26-3906-72	3369-26-4006-72	3259-26-4106-72	3369-26-4206-72
	1" CTS (1 1/8" OD)	.099/.101	1 1/4"	.800"	3259-15-3908-72	3369-15-4008-72	3259-15-4108-72	3369-15-4208-72
			2"	.800"	3259-17-3908-72	3369-17-4008-72	3259-17-4108-72	3369-17-4208-72
			3"	.800"	3259-19-3908-72	3369-19-4008-72	3259-19-4108-72	3369-19-4208-72
			4"	.800"	3259-21-3908-72	3369-21-4008-72	3259-21-4108-72	3369-21-4208-72
			6"	.800"	3259-24-3908-72	3369-24-4008-72	3259-24-4108-72	3369-24-4208-72
			8"	.800"	3259-26-3908-72	3369-26-4008-72	3259-26-4108-72	3369-26-4208-72
		.090	1 1/4"	.800"	3259-15-3908-73	3369-15-4008-73	3259-15-4108-73	3369-15-4208-73
			2"	.800"	3259-17-3908-73	3369-17-4008-73	3259-17-4108-73	3369-17-4208-73
			3"	.800"	3259-19-3908-73	3369-19-4008-73	3259-19-4108-73	3369-19-4208-73
			4"	.800"	3259-21-3908-73	3369-21-4008-73	3259-21-4108-73	3369-21-4208-73
			6"	.800"	3259-24-3908-73	3369-24-4008-73	3259-24-4108-73	3369-24-4208-73
			8"	.800"	3259-26-3908-73	3369-26-4008-73	3259-26-4108-73	3369-26-4208-73
	1/2" IPS	SDR-9.33 (.090)	1 1/4"	.800"	3259-15-3912-72	3369-15-4012-72	3259-15-4112-72	3369-15-4212-72
			2"	.800"	3259-17-3912-72	3369-17-4012-72	3259-17-4112-72	3369-17-4212-72
			3"	.800"	3259-19-3912-72	3369-19-4012-72	3259-19-4112-72	3369-19-4212-72
			4"	.800"	3259-21-3912-72	3369-21-4012-72	3259-21-4112-72	3369-21-4212-72
			6"	.800"	3259-24-3912-72	3369-24-4012-72	3259-24-4112-72	3369-24-4212-72
			8"	.800"	3259-26-3912-72	3369-26-4012-72	3259-26-4112-72	3369-26-4212-72
	3/4" IPS	SDR-11 (.095)	1 1/4"	.800"	3259-15-3913-72	3369-15-4013-72	3259-15-4113-72	3369-15-4213-72
			2"	.800"	3259-17-3913-72	3369-17-4013-72	3259-17-4113-72	3369-17-4213-72
			3"	.800"	3259-19-3913-72	3369-19-4013-72	3259-19-4113-72	3369-19-4213-72
			4"	.800"	3259-21-3913-72	3369-21-4013-72	3259-21-4113-72	3369-21-4213-72
			6"	.800"	3259-24-3913-72	3369-24-4013-72	3259-24-4113-72	3369-24-4213-72
			8"	.800"	3259-26-3913-72	3369-26-4013-72	3259-26-4113-72	3369-26-4213-72
1" IPS	SDR-11 (.119)	1 1/4"	.800"	3259-15-3914-72	3369-15-4014-72	3259-15-4114-72	3369-15-4214-72	
		2"	.800"	3259-17-3914-72	3369-17-4014-72	3259-17-4114-72	3369-17-4214-72	
		3"	.800"	3259-19-3914-72	3369-19-4014-72	3259-19-4114-72	3369-19-4214-72	
		4"	.800"	3259-21-3914-72	3369-21-4014-72	3259-21-4114-72	3369-21-4214-72	
		6"	.800"	3259-24-3914-72	3369-24-4014-72	3259-24-4114-72	3369-24-4214-72	
		8"	.800"	3259-26-3914-72	3369-26-4014-72	3259-26-4114-72	3369-26-4214-72	

- For sizes not listed, contact Continental Industries.
- Con-Stab ID Seal® fittings rated at 125 psig.
- Recommended accessories;
 - Continental's Bladed Chamfering Tool. See page 28 for size combinations available.
- For Protective Sleeves, see page 29.