

Fig. 40

Riser Clamp – Standard

Size Range: 2" through 24"

Material: Carbon steel (CS), Alloy (A), or Stainless Steel (SS)

Finish: Plain or Galvanized

Maximum Temperature: Galvanized 450° F, 650° F (CS), 950° F (A) and 1,000° F (SS)

Service: Riser clamps are used for the support of vertical piping. Load is carried by shear lugs which are welded to the pipe. Shear lugs provided upon request. Local pipe wall stress evaluation available upon request.

Approvals: Complies with Federal Specification A-A-1192A (Type 42), ANSI/MSS SP-69 and MSS SP-58 (Type 42).

Ordering: Specify pipe size, material, figure number, name and finish.

Note: If different loads or dimensions are required, refer to Fig. 40 SD special design riser clamp.

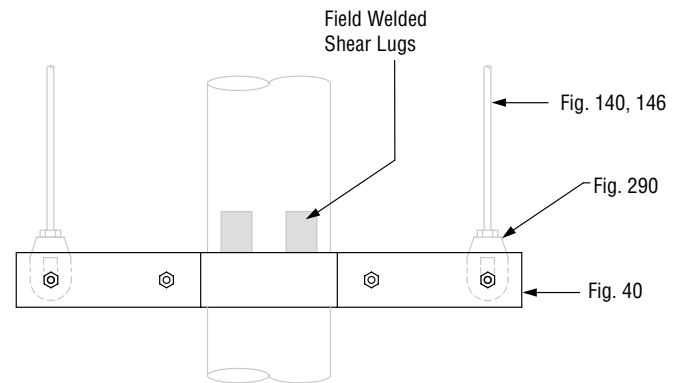
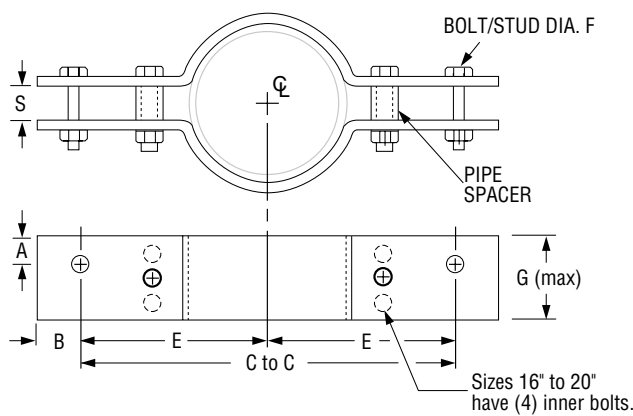


FIG. 40: LOADS (LBS) • WEIGHT (LBS) • DIMENSIONS (IN)

Pipe Size	Max Load		C-C	E	F (max)	G (max)	S	A (CS)	A (alloy) (SS)	B (max)	Maximum Weight Each			
	Rigid Assembly	Spring Assembly									CS	SS	Alloy	
2	900	1,800	18	9	1/2	2 1/2	3/4	1 1/4	7/8	2	18	15	18	
2 1/2			20	10							20	20	20	
3	1,500	3,000	22	11	5/8	3	1 1/2	1 1/8	30		25	30		
4	2,200	4,400							40		40	44		
5			3,000	6,000	24	12	7/8	4	1 1/4		45	40	45	
6	27	13 1/2			5	1 1/2					7/8	1 1/4	60	60
8	5,500	11,000	30	15	1 1/4	6	2 1/4	1 1/4	1 1/8		3	82	82	82
10			32	16								7	1 1/8	1 1/8
12	7,800	15,600	34	17	1 1/2	8	2 1/2	1 1/8	216	202				
14			36	18					8	1 1/2		2	228	228
16	9,000	18,000	39	19 1/2	9	10	3 1/2	2 5/8	2 5/8	4 1/4		314	277	315
18			42	21								9	2	338
20	13,500	27,000	45	22 1/2	2	11	3 1/2	2 5/8	2 5/8			525	525	580
24			42	21								11	2 5/8	2 5/8

- Table of Contents
- General Notes
- Copper Tubing Hangers
- Stainless Steel Hangers
- CPVC Pipe Hangers
- Pipe Rings
- Clevis Hangers
- Steel Pipe Clamps
- Socket Clamps
- Beam Clamps
- Structural Attachments
- Brackets
- Ceiling Plates & Flanges
- Concrete Inserts & Attachments
- Hanger Rods
- Rod Attachments
- Bolts, Nuts, Pins & U-Bolts