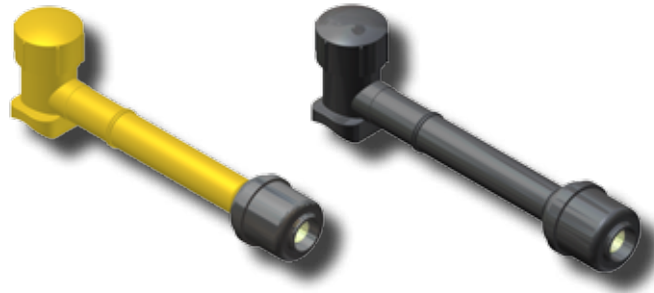




# FITTINGS W/ DRESSER® EFV'S

## CON-STAB ID SEAL®

### Fusion Saddle Tees with Dresser® Medium Capacity Excess Flow Valves



DRESSER® MEDIUM CAPACITY EXCESS FLOW VALVES									
EFV SIZE	OUTLET (PE SIZE)	WALL	Main Size	PUNCH SIZE	PART NUMBER (3408/4710) (ROUND BASE)	PART NUMBER (2406) (ROUND BASE)	PART NUMBER (3408/4710) (RECTANGULAR BASE)	PART NUMBER (2406) (RECTANGULAR BASE)	
DRESSER® MEDIUM CAPACITY	1/2" CTS (5/8" OD)	.090	1 1/4"	.800"	3259-15-3904-78	3369-15-4004-78	3259-15-4104-78	3369-15-4204-78	
			2"	.800"	3259-17-3904-78	3369-17-4004-78	3259-17-4104-78	3369-17-4204-78	
			3"	.800"	3259-19-3904-78	3369-19-4004-78	3259-19-4104-78	3369-19-4204-78	
			4"	.800"	3259-21-3904-78	3369-21-4004-78	3259-21-4104-78	3369-21-4204-78	
			6"	.800"	3259-24-3904-78	3369-24-4004-78	3259-24-4104-78	3369-24-4204-78	
	3/4" CTS (7/8" OD)	.090	1 1/4"	.800"	3259-15-3906-78	3369-15-4006-78	3259-15-4106-78	3369-15-4206-78	
			2"	.800"	3259-17-3906-78	3369-17-4006-78	3259-17-4106-78	3369-17-4206-78	
			3"	.800"	3259-19-3906-78	3369-19-4006-78	3259-19-4106-78	3369-19-4206-78	
			4"	.800"	3259-21-3906-78	3369-21-4006-78	3259-21-4106-78	3369-21-4206-78	
			6"	.800"	3259-24-3906-78	3369-24-4006-78	3259-24-4106-78	3369-24-4206-78	
	1" CTS (1 1/8" OD)	.099/.101	1 1/4"	.800"	3259-15-3908-78	3369-15-4008-78	3259-15-4108-78	3369-15-4208-78	
			2"	.800"	3259-17-3908-78	3369-17-4008-78	3259-17-4108-78	3369-17-4208-78	
			3"	.800"	3259-19-3908-78	3369-19-4008-78	3259-19-4108-78	3369-19-4208-78	
			4"	.800"	3259-21-3908-78	3369-21-4008-78	3259-21-4108-78	3369-21-4208-78	
			6"	.800"	3259-24-3908-78	3369-24-4008-78	3259-24-4108-78	3369-24-4208-78	
		.090	1 1/4"	.800"	3259-15-3908-79	3369-15-4008-79	3259-15-4108-79	3369-15-4208-79	
			2"	.800"	3259-17-3908-79	3369-17-4008-79	3259-17-4108-79	3369-17-4208-79	
			3"	.800"	3259-19-3908-79	3369-19-4008-79	3259-19-4108-79	3369-19-4208-79	
			4"	.800"	3259-21-3908-79	3369-21-4008-79	3259-21-4108-79	3369-21-4208-79	
			6"	.800"	3259-24-3908-79	3369-24-4008-79	3259-24-4108-79	3369-24-4208-79	
	1/2" IPS	SDR-9.33 (.090)	1 1/4"	.800"	3259-15-3912-78	3369-15-4012-78	3259-15-4112-78	3369-15-4212-78	
			2"	.800"	3259-17-3912-78	3369-17-4012-78	3259-17-4112-78	3369-17-4212-78	
			3"	.800"	3259-19-3912-78	3369-19-4012-78	3259-19-4112-78	3369-19-4212-78	
			4"	.800"	3259-21-3912-78	3369-21-4012-78	3259-21-4112-78	3369-21-4212-78	
			6"	.800"	3259-24-3912-78	3369-24-4012-78	3259-24-4112-78	3369-24-4212-78	
	3/4" IPS	SDR-11 (.095)	1 1/4"	.800"	3259-15-3913-78	3369-15-4013-78	3259-15-4113-78	3369-15-4213-78	
			2"	.800"	3259-17-3913-78	3369-17-4013-78	3259-17-4113-78	3369-17-4213-78	
			3"	.800"	3259-19-3913-78	3369-19-4013-78	3259-19-4113-78	3369-19-4213-78	
			4"	.800"	3259-21-3913-78	3369-21-4013-78	3259-21-4113-78	3369-21-4213-78	
			6"	.800"	3259-24-3913-78	3369-24-4013-78	3259-24-4113-78	3369-24-4213-78	
	1" IPS	SDR-11 (.119)	1 1/4"	.800"	3259-15-3914-78	3369-15-4014-78	3259-15-4114-78	3369-15-4214-78	
			2"	.800"	3259-17-3914-78	3369-17-4014-78	3259-17-4114-78	3369-17-4214-78	
			3"	.800"	3259-19-3914-78	3369-19-4014-78	3259-19-4114-78	3369-19-4214-78	
			4"	.800"	3259-21-3914-78	3369-21-4014-78	3259-21-4114-78	3369-21-4214-78	
			6"	.800"	3259-24-3914-78	3369-24-4014-78	3259-24-4114-78	3369-24-4214-78	
				8"	.800"	3259-26-3914-78	3369-26-4014-78	3259-26-4114-78	3369-26-4214-78

- For sizes not listed, contact Continental Industries.
- Con-Stab ID Seal® fittings rated at 125 psig.
- Recommended accessories;
  - Continental's Bladed Chamfering Tool. See page 28 for size combinations available.
- For Protective Sleeves, see page 29.