

FITTINGS W/ UMAC® EFV'S

PA ELIMINATORS with UMAC® Series 1800 Excess Flow Valves

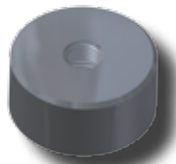
UMAC® 1800 SERIES EXCESS FLOW VALVES					
EFV SIZE	OUTLET (PE SIZE)	WALL	MAIN SIZE	PART NUMBER	PART NUMBER
				5864 1/2" CR PUNCH	5764 13/16" CR PUNCH
UMAC® SERIES 1800	1" CTS (1 1/8" OD)	.099/.101	1 1/4"	5864-15-1008-74	N/A
			2"	5864-17-1008-74	5764-17-1008-74
			3"	5864-19-1008-74	5764-19-1008-74
			4"	5864-21-1008-74	5764-21-1008-74
			6"	5864-24-1008-74	5764-24-1008-74
			8"	N/A	5764-26-1008-74
		.090	1 1/4"	5864-15-1008-75	N/A
			2"	5864-17-1008-75	5764-17-1008-75
			3"	5864-19-1008-75	5764-19-1008-75
			4"	5864-21-1008-75	5764-21-1008-75
			6"	5864-24-1008-75	5764-24-1008-75
			8"	N/A	5764-26-1008-75
	3/4" IPS	SDR-11 (.095)	1 1/4"	5864-15-1013-74	N/A
			2"	5864-17-1013-74	5764-17-1013-74
			3"	5864-19-1013-74	5764-19-1013-74
			4"	5864-21-1013-74	5764-21-1013-74
			6"	5864-24-1013-74	5764-24-1013-74
			8"	N/A	5764-26-1013-74
	1" IPS	SDR-11 (.119)	1 1/4"	5864-15-1014-74	N/A
			2"	5864-17-1014-74	5764-17-1014-74
			3"	5864-19-1014-74	5764-19-1014-74
			4"	5864-21-1014-74	5764-21-1014-74
			6"	5864-24-1014-74	5764-24-1014-74
			8"	N/A	5764-26-1014-74



- For sizes not listed, contact Continental Industries.
- Con-Stab ID Seal® Eliminators rated at 125 psig.
- Recommended accessories;
 - 33-5505-00 ~ Combination Tapping Tool & Saddle Bolt "T" Wrench for 1 1/4" thru 6" IPS Eliminators
 - 33-5505-01 ~ Combination Tapping Tool & Saddle Bolt "T" Wrench for 3" thru 8" IPS Eliminators
 - 33-5508-00 ~ Test Plug Cap for Eliminator Saddles
- For Protective Sleeves, see page 29.



33-5505-00 & 33-5505-01 ~ Combination Tapping Tool & Saddle Bolt "T" Wrench



33-5508-00 ~ Test Plug Cap for Eliminator Saddles with 1/4" FPT for attachment of quick connect coupling

