

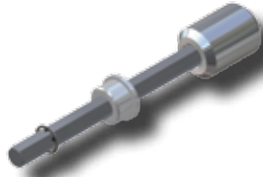


TRANSITION PUNCH TEES

1214, 1315 & 1416 STYLE TRANSITION SERVICE PUNCH TEES Con-Stab ID Seal® Outlets

| OUTLET (PE SIZE) | WALL | INLET | PART NUMBER (3408/4710) | PUNCH SIZE |
|--------------------|-----------------|-----------------|-------------------------|------------|
| 1/2" CTS (5/8" OD) | .090 | 1/2" Weld | 1214-09-3204-00 | 3/8" CR |
| | | 1/2" Threaded | 1214-12-3204-00 | |
| | | 3/4" Weld | 1315-09-3204-00 | |
| | | 3/4" Threaded | 1315-12-3204-00 | |
| 3/4" CTS (7/8" OD) | .090 | 1/2" Weld | 1214-09-3206-00 | 3/8" CR |
| | | 1/2" Threaded | 1214-12-3206-00 | |
| | | 3/4" Weld | 1315-09-3206-00 | |
| | | 3/4" Threaded | 1315-12-3206-00 | |
| 1" CTS (1 1/8" OD) | .099/.101 | 1/2" Weld | 1214-09-3208-00 | 3/8" CR |
| | | 1/2" Threaded | 1214-12-3208-00 | |
| | | 3/4" Weld | 1315-09-3208-00 | |
| | | 3/4" Threaded | 1315-12-3208-00 | |
| | | 1" Weld | 1416-09-3208-00 | |
| | .090 | 1" Threaded | 1416-12-3208-00 | 3/4" CR |
| | | 1/2" Weld | 1214-09-3208-0A | 3/8" CR |
| | | 1/2" Threaded | 1214-12-3208-0A | |
| | | 3/4" Weld | 1315-09-3208-0A | |
| | | 3/4" Threaded | 1315-12-3208-0A | |
| 1" Weld | 1416-09-3208-0A | | | |
| 1" Threaded | 1416-12-3208-0A | 3/4" CR | | |
| | 1/2" Weld | 1214-09-3212-00 | 3/8" CR | |
| 1/2" Threaded | 1214-12-3212-00 | | | |
| 3/4" Weld | 1315-09-3212-00 | | | |
| 3/4" Threaded | 1315-12-3212-00 | | | |
| 3/4" IPS | SDR-11 (.095) | 1/2" Weld | 1214-09-3213-00 | 3/8" CR |
| | | 1/2" Threaded | 1214-12-3213-00 | |
| | | 3/4" Weld | 1315-09-3213-00 | |
| | | 3/4" Threaded | 1315-12-3213-00 | |
| | | 1" Weld | 1416-09-3213-00 | 3/4" CR |
| | | 1" Threaded | 1416-12-3213-00 | |

- For sizes not listed, contact Continental Industries.
- Con-Stab ID Seal® Transition Punch Tees rated at 125 psig.
- For optional punch sizes, see page 31.
- Recommended accessories;
 - Continental's Bladed Chamfering Tool. See page 30 for size combinations available.
 - 23-3691-00 ~ 5/16" Hex Drive Key, Bushing and Socket Adapter for 1214 Style Tees (pg 31)
 - 23-3692-00 ~ 3/8" Hex Drive Key, Bushing and Socket Adapter for 1315 Style Tees (pg 31)
 - 23-0941-00 ~ 1/2" Square Drive Key, Bushing and Socket Adapter for 1416 Style Tees (pg 31)
- For Protective Sleeves, see page 32.
- For additional Accessories, see page 31.



23-3691-00 & 23-3692-00
Hex Drive Key, Bushing and Socket Adapter
for 1214 & 1315 Style Tees (pg 31)



23-0941-00
Hex Drive Key, Bushing and Socket Adapter
for 1416 Style Tees (pg 31)

