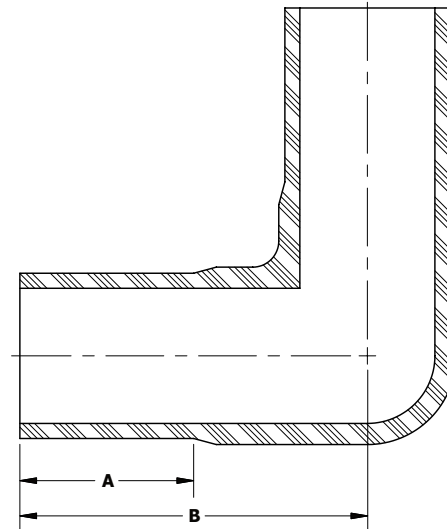


Butt Fusion Fittings



90° Elbow

BUTT FUSION
3408/4710 HDPE



90° Butt Fusion Elbow - 3408/4710 HDPE			
PE Size	SDR / WALL	Part Number	Package Qty
1 1/4" IPS	DR-11	4431-51-0615-AA	10
2" IPS	DR-11	4431-51-0617-00	10
3 IPS	DR-11	4431-51-0619-00	2
4" IPS	DR-11	4431-51-0621-00	2
6" IPS	DR-11	4431-51-0624-00	1

• For sizes not listed, contact Continental Industries.

Butt Fusion 90° Elbow Dimensions		
Part Number	A	B
4431-51-0615-AA	2.500	4.000
4431-51-0617-00	2.500	4.000
4431-51-0619-00	3.000	5.500
4431-51-0621-00	3.000	6.000
4431-51-0624-00	4.000	8.000

• All values are nominal dimensions.