

FITTINGS W/ UMAC® EFV'S



CON-STAB ID SEAL® ELIMINATORS with UMAC® Series 700 Excess Flow Valves

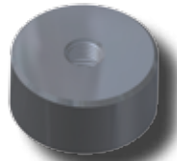
UMAC® 700 SERIES EXCESS FLOW VALVES							
EFV SIZE	OUTLET (PE SIZE)	WALL	MAIN SIZE	PART NUMBER	PART NUMBER		
				5864 1/2" CR PUNCH	5764 13/16" CR PUNCH		
UMAC® SERIES 700	1/2" CTS (5/8" OD)	.090	1 1/4"	5864-15-1604-72	N/A		
			2"	5864-17-1604-72	5764-17-1604-72		
			3"	5864-19-1604-72	5764-19-1604-72		
			4"	5864-21-1604-72	5764-21-1604-72		
			6"	5864-24-1604-72	5764-24-1604-72		
			8"	N/A	5764-26-1604-72		
	3/4" CTS (7/8" OD)	.090	.090	1 1/4"	5864-15-1606-72	N/A	
				2"	5864-17-1606-72	5764-17-1606-72	
				3"	5864-19-1606-72	5764-19-1606-72	
				4"	5864-21-1606-72	5764-21-1606-72	
				6"	5864-24-1606-72	5764-24-1606-72	
				8"	N/A	5764-26-1606-72	
	1" CTS (1 1/8" OD)	.099/.101	.099/.101	1 1/4"	5864-15-1608-72	N/A	
				2"	5864-17-1608-72	5764-17-1608-72	
				3"	5864-19-1608-72	5764-19-1608-72	
				4"	5864-21-1608-72	5764-21-1608-72	
				6"	5864-24-1608-72	5764-24-1608-72	
				8"	N/A	5764-26-1608-72	
		.090	.090	.090	1 1/4"	5864-15-1608-73	N/A
					2"	5864-17-1608-73	5764-17-1608-73
					3"	5864-19-1608-73	5764-19-1608-73
					4"	5864-21-1608-73	5764-21-1608-73
					6"	5864-24-1608-73	5764-24-1608-73
					8"	N/A	5764-26-1608-73
	1/2" IPS	SDR-9.33 (.090)	SDR-9.33 (.090)	1 1/4"	5864-15-1612-72	N/A	
				2"	5864-17-1612-72	5764-17-1612-72	
				3"	5864-19-1612-72	5764-19-1612-72	
				4"	5864-21-1612-72	5764-21-1612-72	
				6"	5864-24-1612-72	5764-24-1612-72	
				8"	N/A	5764-26-1612-72	
	3/4" IPS	SDR-11 (.095)	SDR-11 (.095)	1 1/4"	5864-15-1613-72	N/A	
				2"	5864-17-1613-72	5764-17-1613-72	
				3"	5864-19-1613-72	5764-19-1613-72	
				4"	5864-21-1613-72	5764-21-1613-72	
				6"	5864-24-1613-72	5764-24-1613-72	
				8"	N/A	5764-26-1613-72	
1" IPS	SDR-11 (.119)	SDR-11 (.119)	1 1/4"	5864-15-1614-72	N/A		
			2"	5864-17-1614-72	5764-17-1614-72		
			3"	5864-19-1614-72	5764-19-1614-72		
			4"	5864-21-1614-72	5764-21-1614-72		
			6"	5864-24-1614-72	5764-24-1614-72		
			8"	N/A	5764-26-1614-72		



- For sizes not listed, contact Continental Industries.
- Con-Stab ID Seal® Eliminators rated at 125 psig.
- Recommended accessories;
 - Continental's Bladed Chamfering Tool. See page 28 for size combinations available.
 - 33-5505-00 ~ Combination Tapping Tool & Saddle Bolt "T" Wrench for 1 1/4" thru 6" IPS Eliminators
 - 33-5505-01 ~ Combination Tapping Tool & Saddle Bolt "T" Wrench for 3" thru 8" IPS Eliminators
 - 33-5508-00 ~ Test Plug Cap for Eliminator Saddles
- For Protective Sleeves, see page 29.



33-5505-00 & 33-5505-01 ~ Combination Tapping Tool & Saddle Bolt "T" Wrench



33-5508-00 ~ Test Plug Cap for Eliminator Saddles with 1/4" FPT for attachment of quick connect coupling

