

Fig. 216

Heavy Pipe Clamp

Size Range: 3" through 42"

Material: Carbon steel

Finish: Plain or Galvanized

Service: Recommended for suspension of pipe lines where no insulation is required.

Maximum Temperature: Plain 750° F, Galvanized 450° F

Approvals: Complies with Federal Specification A-A-1192A (Type 4)

WW-H-171-E (Type 4), ANSI/MSS SP-69 and MSS SP-58 (Type 4).

Installation: Normally used with welded eye rod or with weldless eye nut

Fig. 290, see page 102.

Features:

- Designed for heavy load up to 750° F

Ordering: Specify pipe size, figure number, name and finish.

Note: If different loads or dimensions are required, refer to Fig. 42 SD non-standard two bolt pipe clamp.



Note: This picture is representative of a typical Figure 216. Distance between clamp ears beneath pipe may or may not be equal to upper gap.

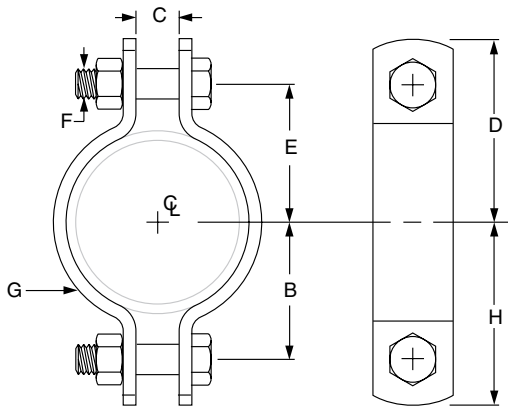


FIG. 216: LOADS (LBS) • WEIGHT (LBS) • DIMENSIONS (IN)

Pipe Size	Max Load For Service Temp		Weight	B	C	D	Rod Take Out E	F	G Width	H
	650° F	750° F								
3	3,370	3,005	3.6	2 ¹⁵ / ₁₆	1	4	3 ¹ / ₈	3 ³ / ₄	2	3 ¹³ / ₁₆
4	3,515	3,135	5.5	3 ⁹ / ₁₆		4 ⁷ / ₈	3 ³ / ₄	7 ⁷ / ₈		4 ¹¹ / ₁₆
5			6.3	4 ¹ / ₈		5 ¹ / ₂	4 ³ / ₈			
6	4,865	4,350	11.7	5	1 ¹ / ₈	6 ⁵ / ₈	5 ¹ / ₄	1	2 ¹ / ₂	6 ³ / ₈
8		4,340	13.9	6 ¹ / ₈		7 ⁵ / ₈	6 ¹ / ₄			7 ¹ / ₂
10	6,010	5,360	22.3	7 ⁹ / ₁₆	1 ¹ / ₄	9 ¹ / ₁₆	7 ¹¹ / ₁₆	1 ¹ / ₄	3	8 ¹⁵ / ₁₆
12	8,675	7,740	38.1	9	1 ⁵ / ₈	10 ⁷ / ₈	9 ¹ / ₄	1 ¹ / ₂		10 ⁵ / ₈
14	9,120	8,135	46.8	9 ³ / ₄		11 ⁷ / ₈	10		11 ⁵ / ₈	
16			51.4	10 ³ / ₄		12 ⁷ / ₈	11			12 ⁵ / ₈
18	13,800	–	130.1	14 ¹ / ₂	3	17 ¹ / ₄	14 ¹ / ₂	2	6	17 ¹ / ₄
20	15,300	–	163.6	16		18 ³ / ₄	16		5	18 ³ / ₄
24	16,300	–	215.2	18 ¹ / ₂	3 ³ / ₄	21 ¹ / ₂	18 ¹ / ₂	2 ¹ / ₄	6	21 ¹ / ₂
28	18,000	–	302.8	20 ¹ / ₂		23 ¹ / ₂	20 ¹ / ₂		8	23 ¹ / ₂
30	20,500	–	365.4	22 ¹ / ₂	3 ¹ / ₂	26	22 ¹ / ₂	2 ¹ / ₂	7	26
32	23,750	–	431.7	23 ¹ / ₂		27	23 ¹ / ₂		27	
34	25,000	–	533.8	25		28 ¹ / ₂	25		8	28 ¹ / ₂
36	28,000	–	575.1	26 ¹ / ₂		30 ¹ / ₄	26 ¹ / ₂			30 ¹ / ₄
42	35,000	–	915.7	30		33 ³ / ₄	30		2 ³ / ₄	10

- Table of Contents
- General Notes
- Copper Tubing Hangers
- Stainless Steel Hangers
- CPVC Pipe Hangers
- Pipe Rings
- Clevis Hangers
- Steel Pipe Clamps
- Socket Clamps
- Beam Clamps
- Structural Attachments
- Brackets
- Ceiling Plates & Flanges
- Concrete Inserts & Attachments
- Hanger Rods
- Rod Attachments
- Bolts, Nuts, Pins & U-Bolts