

TRANSITION SADDLE PUNCH TEES



1214, 1315 & 1416 STYLE TRANSITION SADDLE PUNCH TEES Con-Stab ID Seal® Outlets

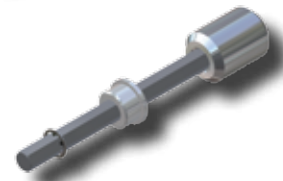
OUTLET (PE SIZE)	WALL	Body Size	Main Size	PUNCH SIZE	PART NUMBER (3408/4710)	
1/2" CTS (5/8" OD)	.090	1/2"	3/4"	3/8" CR	1214-13-3204-00	
		3/4"			1315-13-3204-00	
		1/2"	1"	3/8" CR	1214-14-3204-00	
		3/4"			1315-14-3204-00	
		1/2"	1 1/4"	3/8" CR	1214-15-3204-00	
		3/4"			1315-15-3204-00	
		1/2"	2"	3/8" CR	1214-17-3204-00	
		3/4"			1315-17-3204-00	
		1/2"	3"	3/8" CR	1214-19-3204-00	
		3/4"			1315-19-3204-00	
		1/2"	4"	3/8" CR	1214-21-3204-00	
		3/4"			1315-21-3204-00	
1/2"	6"	3/8" CR	1214-24-3204-00			
3/4"			1315-24-3204-00			
3/4" CTS (7/8" OD)	.090	1/2"	3/4"	3/8" CR	1214-13-3206-00	
		3/4"			1315-13-3206-00	
		1/2"	1"	3/8" CR	1214-14-3206-00	
		3/4"			1315-14-3206-00	
		1/2"	1 1/4"	3/8" CR	1214-15-3206-00	
		3/4"			1315-15-3206-00	
		1/2"	2"	3/8" CR	1214-17-3206-00	
		3/4"			1315-17-3206-00	
		1/2"	3"	3/8" CR	1214-19-3206-00	
		3/4"			1315-19-3206-00	
		1/2"	4"	3/8" CR	1214-21-3206-00	
		3/4"			1315-21-3206-00	
1/2"	6"	3/8" CR	1214-24-3206-00			
3/4"			1315-24-3206-00			
1" CTS (1 1/8" OD)	.099/.101	3/4"	3/4"	3/8" CR	1315-13-3208-00	
		3/4"	1"	3/8" CR	1315-14-3208-00	
		3/4"	1 1/4"	3/8" CR	1315-15-3208-00	
		1"		3/4" CR	1416-15-3208-00	
		3/4"	2"	3/8" CR	1315-17-3208-00	
		1"		3/4" CR	1416-17-3208-00	
		3/4"	3"	3/8" CR	1315-19-3208-00	
		1"		3/4" CR	1416-19-3208-00	
		3/4"	4"	3/8" CR	1315-21-3208-00	
		1"		3/4" CR	1416-21-3208-00	
		3/4"	6"	3/8" CR	1315-24-3208-00	
		1"		3/4" CR	1416-24-3208-00	
	.090	.090	3/4"	3/4"	3/8" CR	1315-13-3208-0A
			3/4"	1"	3/8" CR	1315-14-3208-0A
			3/4"	1 1/4"	3/8" CR	1315-15-3208-0A
			1"		3/4" CR	1416-15-3208-0A
			3/4"	2"	3/8" CR	1315-17-3208-0A
			1"		3/4" CR	1416-17-3208-0A
			3/4"	3"	3/8" CR	1315-19-3208-0A
			1"		3/4" CR	1416-19-3208-0A
			3/4"	4"	3/8" CR	1315-21-3208-0A
			1"		3/4" CR	1416-21-3208-0A
			3/4"	6"	3/8" CR	1315-24-3208-0A
			1"		3/4" CR	1416-24-3208-0A

CONTINUED ON NEXT PAGE

- For sizes not listed, contact Continental Industries.
- Con-Stab ID Seal® Transition Saddle Punch Tees rated at 125 psig.
- For optional punch sizes, see page 31.
- Recommended accessories;
 - Continental's Bladed Chamfering Tool. See page 30 for size combinations available.
 - 23-3691-00 ~ 5/16" Hex Drive Key, Bushing and Socket Adapter for 1214 Style Tees (pg 31)
 - 23-3692-00 ~ 3/8" Hex Drive Key, Bushing and Socket Adapter for 1315 Style Tees (pg 31)
 - 23-0941-00 ~ 1/2" Square Drive Key, Bushing and Socket Adapter for 1416 Style Tees (pg 31)
- For Protective Sleeves, see page 32.
- For additional Accessories, see page 31.



23-3691-00 & 23-3692-00
Hex Drive Key, Bushing and Socket Adapter
for 1214 & 1315 Style Tees (pg 31)



23-0941-00
Hex Drive Key, Bushing and Socket Adapter
for 1416 Style Tees (pg 31)