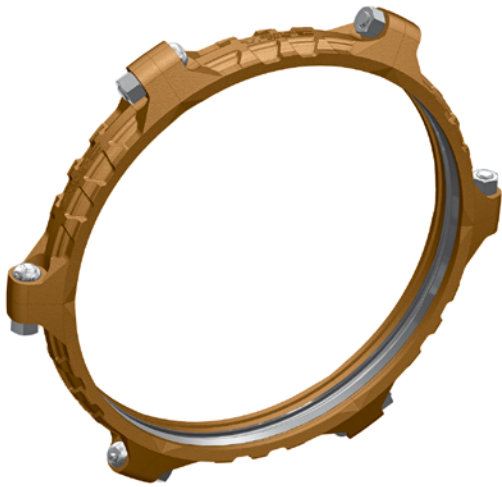


## FIG. 7022

### Weld Ring Gruv-Ring Coupling



The Gruvlok® Figure 7022 coupling with Gruv-Ring forms a flexible grooved end pipe joint for use on steel pipe. Services for this versatile connection include large O.D. mining applications such as process, tailings and slurries. The coupling's multi-segment design supplies optimum strength for working pressures to 175 PSF.

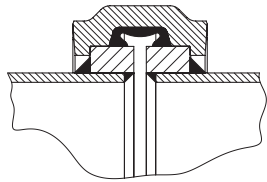


Fig. 7022 with  
Type C Ring

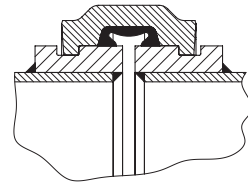


Fig. 7022 with  
Type D Ring

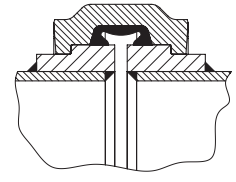


Fig. 7022 with  
Type E Ring

## MATERIAL SPECIFICATIONS

### ANSI BOLTS & HEAVY HEX NUTS:

Heat treated, oval neck track head bolts conforming to SAE J429 Grade 5 with a minimum tensile strength of 105,000 psi and heavy hex nuts of carbon steel conforming to ASTM A 563 Grade A or Grade B, or J995 Grade 2. Bolts and nuts are provided zinc electroplated as standard.

### STAINLESS STEEL BOLTS & NUTS:

304SS Stainless Steel bolts and nuts are available as a standard option. (316SS are available for special order).

### HOUSING:

Ductile Iron conforming to ASTM A 536, Grade 65-45-12

### COATINGS:

Rust inhibiting paint – Color: ORANGE (standard)  
Hot Dipped Zinc Galvanized (optional)  
Other Colors Available (IE: RAL3000 and RAL9000)  
For other Coating requirements contact an Anvil Representative.

### GASKETS: Materials

Properties as designated in accordance with ASTM D 2000

#### Grade "E" EPDM (Green color code)

-40°F to 230°F (Service Temperature Range)(-40°C to 110°C)  
Recommended for water service, diluted acids, alkalies solutions, oil-free air and many other chemical services.  
NOT FOR USE IN PETROLEUM APPLICATIONS.

#### Grade "T" Nitrile (Orange color code)

-20°F to 180°F (Service Temperature Range)(-29°C to 82°C)

Recommended for petroleum applications, air with oil vapors and vegetable and mineral oils.

NOT FOR USE IN HOT WATER OR HOT AIR

### GASKET TYPE:

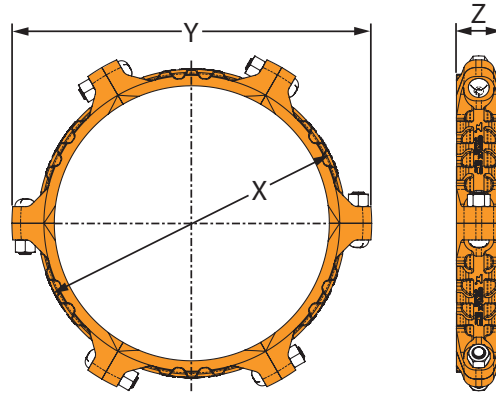
C Style cross section featuring an enhanced larger cross section to provide optimal sealing throughout the range of pipe dimensional variations and operating conditions.

### LUBRICATION:

Standard  
Gruvlok Xtreme™

## FIG. 7022

### Weld Ring Gruv-Ring Coupling



**FIGURE 7022 WELD RING GRUV-RING COUPLING**

Nominal Size	Pipe O.D. Range	Applied Gruv-Ring O.D.	Max. Working Pressure	Max. End Load	Range of Pipe End Separation	Deflection from $\mathcal{Q}$		Coupling Dimensions			Number of Segments	Coupling Bolts		Approx. Wt. per Segment	Total Assembly Weight
						Per Coupling	of Pipe	X	Y	Z		Qty.	Size		
In.	In./mm	In./mm	PSI/kPa	Lbs./N	In./mm	Degrees( $^{\circ}$ )	In./ft-mm/m	In./mm	In./mm	In./mm			In./mm	Lbs./kg	Lbs./kg
30	28.00 - 32.00 711.2 - 812.8	33.75 857	175 1207	156,558 696,405	0-1/2 0-12.7	0.85	0.18 15.0	37.00 940	43.25 1099	5.375 137	6	6	1 1/2 x 5 3/4	42 19.1	250 113.4
36	34.00 - 38.00 863.6 - 965.2	40.19 1021	175 1207	221,978 987,407	0-1/2 0-12.7	0.72	0.15 12.5	43.47 1104	50.00 1270	5.375 137	6	6	1 1/2 x 5 3/4	48 21.8	290 131.5
42	40.00 - 44.00 1,016.0 - 1,117.6	46.63 1184	175 1207	298,790 1,329,084	0-1/2 0-12.7	0.62	0.12 10.0	49.84 1266	56.50 1435	5.375 137	8	8	1 3/4 x 6	46 20.8	345 156.5
48	46.00 - 50.00 1,168.4 - 1,270.0	53.13 1350	175 1207	387,905 1,725,488	0-1/2 0-12.7	0.53	0.11 9.2	57.16 1452	62.50 1588	5.500 140	8	16	1 3/8 x 5 3/4	73 32.9	580 263.1
54	52.00 - 56.00 1,320.8 - 1,422.4	59.69 1516	175 1207	489,660 2,178,116	0-1/2 0-12.7	0.48	0.10 8.3	63.60 1615	69.28 1760	5.625 143	8	16	1 1/2 x 5 3/4	81 36.7	650 294.8
60	58.00 - 64.00 1,473.2 - 1,625.6	66.19 1681	175 1207	602,116 2,678,346	0-1/2 0-12.7	0.43	0.09 7.5	70.00 1778	75.71 1923	5.750 146	10	20	1 1/2 x 5 3/4	76 34.3	750 340.2

**NOTE:**

Impact gun can be used for installation, verify that the output of the impact gun is within the required torque range.

For additional details see "Coupling Data Chart Notes" on page 17.  
For additional Bolt Torque information, contact an Anvil Representative.