

COPPER TUBING HANGERS

Fig. CT-128R

Rod Threaded Ceiling Flange

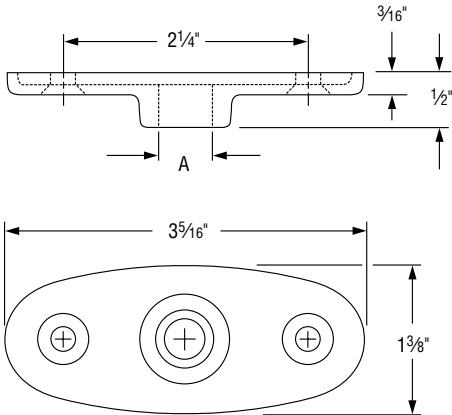
Size Range: $\frac{3}{8}$ " and $\frac{1}{2}$ "

Material: Malleable iron

Finish: Copper plated

Service: Recommended for attachment to wood beams or ceiling.

Ordering: Specify rod size, figure number, name.



**FIG. CT-128R:
LOADS (LBS) • WEIGHT (LBS) • DIMENSIONS (IN)**

| Rod Size A | Max Load | Weight | Screws | |
|---------------|----------|--------|----------|----------|
| | | | Quantity | Size No. |
| $\frac{3}{8}$ | 180 | 0.16 | 2 | 12 |
| $\frac{1}{2}$ | | | | |

Fig. CT-138R

Extension Split Tubing Clamp (Rod Threaded)

Size Range: $\frac{1}{2}$ " through 2"

Material: Malleable iron

Finish: Copper plated

Service: Recommended for suspension of non-insulated **stationary** copper tube.

Approvals: Complies with Federal Specification A-A-1192A (Type 12) WW-H-171-E (Type 25), ANSI/MSS SP-69 and MSS SP-58 (Type 12).

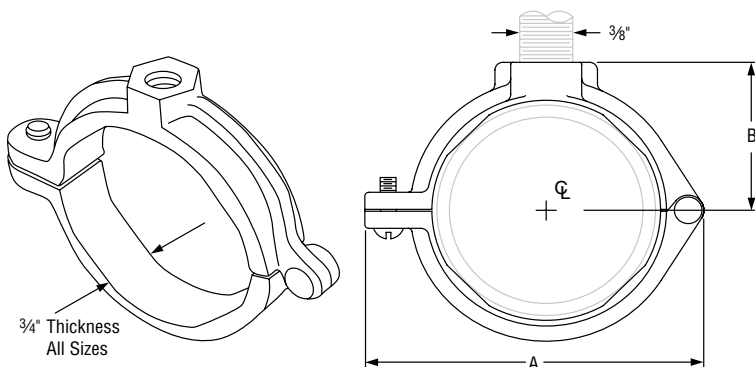
Installation:

- Permanent installation of clamp may be made before the tubing is placed in position.
- Final installation is attained by swinging the lower portion of the hinged clamp up under the tubing and inserting a single screw securely.

Features:

- Hinged design provides for economical installation.
- Designed to provide a tight fit on copper tubing.

Ordering: Specify nominal tube size, figure number, name.



**FIG. CT-138R:
LOADS (LBS) • WEIGHT (LBS) • DIMENSIONS (IN)**

| Tube Size | Max Load | Weight | A | B |
|----------------|----------|--------|----------------|-----------------|
| $\frac{1}{2}$ | 180 | 0.10 | 2 | $\frac{3}{4}$ |
| $\frac{3}{4}$ | | 0.12 | $2\frac{1}{4}$ | $\frac{7}{8}$ |
| 1 | | 0.14 | $2\frac{1}{2}$ | 1 |
| $1\frac{1}{4}$ | | 0.18 | $2\frac{7}{8}$ | $1\frac{1}{8}$ |
| $1\frac{1}{2}$ | | 0.22 | $3\frac{3}{4}$ | $1\frac{1}{4}$ |
| 2 | | 0.36 | 4 | $1\frac{1}{16}$ |