

## Fig. 218

### Malleable Beam Clamp without Extension Piece

**Material:** Malleable iron jaw, steel tie rod, nuts and washer.

**Finish:** Plain or Galvanized

**Service:** Recommended for attachment to structural steel. Use in conjunction with beams where beam widths are from 2 3/8" minimum to 7" maximum and flange thickness does not exceed 0.60".

**Approvals:** Complies with Federal Specification A-A-1192A (Type 30) WW-H-171-E (Type 30), ANSI/MSS SP-69 and MSS SP-58 (Type 30). UL, ULC Listed (Sizes 3/4" - 12" pipe size, when used with the Fig. 157 extension piece 3/8" - 7/8" rod sizes).

FM Approved (Sizes 3/4" - 4" pipe size, when used with the Fig. 157 extension piece 3/8" rod size).

**Installation:** The malleable beam clamp Fig. 218 may be used with an eye rod, or Fig. 157 extension piece.

**Features:**

- Functional design insures proper fit for all beam sizes.
- Tie rod locks clamp in place when nuts are tightened.
- Ordering and stocking simplified because of one universal size.
- Design allows hanger rod to swing from vertical providing flexibility at the beam clamp.

**Ordering:** Specify figure number, name and finish.

**Note:** When used with Fig. 157 see page 102 extension piece, an additional inch or more of vertical adjustment is obtained.

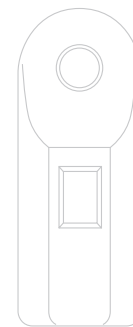
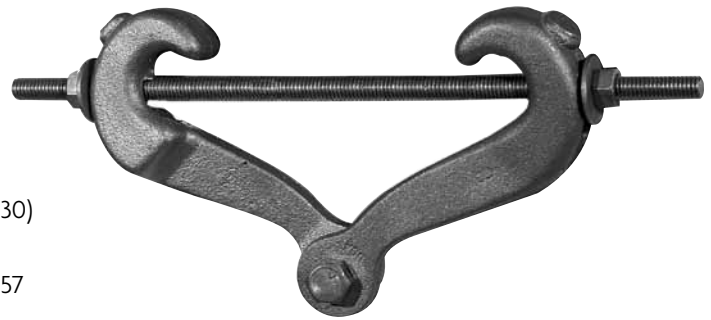


Fig. 157 (not supplied)

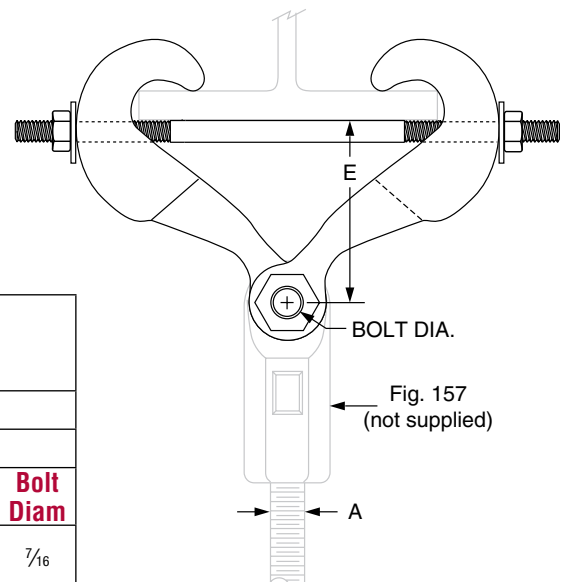


FIG. 218: LOADS (LBS) • WEIGHT (LBS) • DIMENSIONS (IN)										
Max Rod Size A	Max Load ■	Weight	Width of Beam Flange (in)							Bolt Diam
			Rod Take Out - E (in)							
			2 3/8	3	4	5	6	7		
7/8	1,365	2.2	3 1/2	3 3/16	3 5/16	2 15/16	2 9/16	1 7/8	7/16	

■ Note: see page 257 for load capacity of rod.