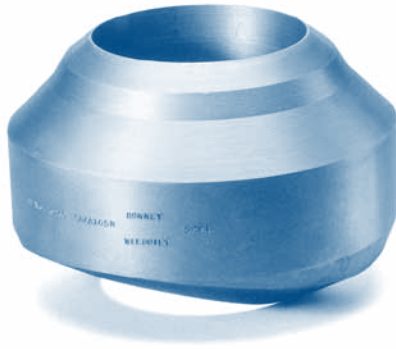
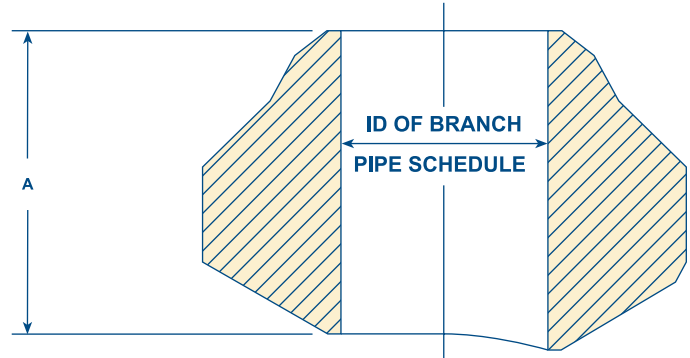


**Heavy Wall**

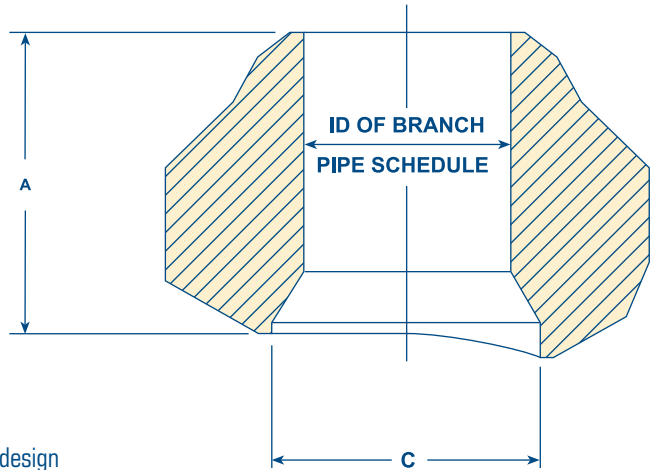
**Forged**



The Heavy Wall Forged Weldolet® is an integrally reinforced branch connection. It provides the economical and engineering answer to the problem of welding outlet fittings on high pressure, high temperature piping and pressure vessels.



**TYPE 1**



**TYPE 2**

Type 1 - Straight thru bore design

Type 2 - Conventional tapered bore design

Run Wall Thickness	3/4		1		1-1/4		1-1/2		1-3/4		2		2-1/4		2-1/2		2-3/4		3	
	A	C	A	C	A	C	A	C	A	C	A	C	A	C	A	C	A	C	A	C
3	2-7/8	2.906	3-7/32	2.900	3-3/8	2.906	3-5/8	2.900	4-1/8	2.900	4-9/16	2.900	5	2.900	5-1/2	2.900	5-7/8	2.900	6-1/16	2.900
3-1/2	3-1/8	3.359	3-1/4	3.359	3-7/16	3.359	3-3/4	3.359	4-3/16	3.359	4-5/8	3.359	5-1/16	3.359	5-9/16	3.359	6	3.359	6-5/16	3.359
4	3-5/16	3.843	3-3/8	3.826	3-1/2	3.828	3-7/8	3.826	4-3/4	3.826	4-3/4	3.826	5-3/16	3.826	5-5/8	3.826	6-1/8	3.826	6-9/16	3.826
5	3-3/4	4.812	3-3/4	4.812	4	4.812	4-1/4	4.812	4-3/4	4.812	5-1/4	4.812	5-3/4	4.812	6-1/4	4.812	6-5/8	4.812	7-3/16	4.812
6	4-1/8	5.750	4-11/32	5.761	4-1/2	5.760	4-11/16	5.760	5-1/4	5.760	5-3/4	5.760	6-1/4	5.760	6-3/4	5.760	7-1/4	5.760	7-13/16	5.760
8	4-3/16	7.625	4-5/8	7.625	4-7/8	7.625	5-5/32	7.625	5-3/4	7.625	6-11/32	7.625	6-15/16	7.625	7-17/32	7.625	8-3/32	7.625	8-11/16	7.625
10	4-1/4	9.750	4-27/32	9.750	5	9.562	5-5/16	9.562	5-15/16	9.562	6-9/16	9.562	7-3/16	9.562	7-13/16	9.562	8-7/16	9.562	9-1/16	9.562
12	4-3/8	11.750	5-3/32	11.750	5-3/8	11.375	5-11/16	11.375	6-5/16	11.375	6-15/16	11.375	7-9/16	11.375	8-3/16	11.375	8-13/16	11.375	9-7/16	11.375
14	4-1/2	13	5-1/4	13	5-1/2	12.500	5-13/16	12.500	6-5/16	12.500	6-15/16	12.500	7-9/16	12.500	8-3/16	12.500	8-13/16	12.500	9-7/16	12.500
16	4-11/16	15	5-7/8	15	6	14.312	6-7/16	14.310	6-5/8	14.310	7-1/4	14.310	7-7/8	14.310	8-1/2	14.310	9-1/8	14.310	9-3/4	14.310
18	5-1/8	17	6-1/2	17	6-1/2	16.125	6-1/2	16.126	6-13/16	16.126	7-7/16	16.126	8-7/32	16.126	8-13/16	16.126	9-13/32	16.126	10-1/32	16.126
20	5-5/8	19	6-3/4	19	7	17.937	7-9/16	17.938	7-25/32	17.938	8-3/32	17.938	8-21/32	17.938	9-1/4	17.938	9-29/32	17.938	10-15/32	17.938
24	6-1/2	23	7-5/8	23	8	21.564	8-23/32	21.564	8-31/32	21.564	9-13/16	21.568	10-1/2	21.568	11	21.564	12-9/16	21.564	10-21/32	21.564