

Fig. 137C: Plastic Coated

U-Bolts

Size Range: 1/2" through 8"

Material: Carbon steel U-bolt and four finished hex nuts. Formed portion of the U-bolt is plastic coated.

Maximum Temperature: 225° F

Service: Recommended for support or guide for glass, copper, brass and aluminum pipe.

Approvals: Complies with Federal Specification A-A-1192A (Type 24), WW-H-171-E (Type 24), ANSI/MSS SP-69 and MSS SP-58 (Type 24).

Ordering: Specify pipe size x rod size (e.g., 2 x 3/8), figure number and name.

If hex nuts are not required, specify "without hex nuts".

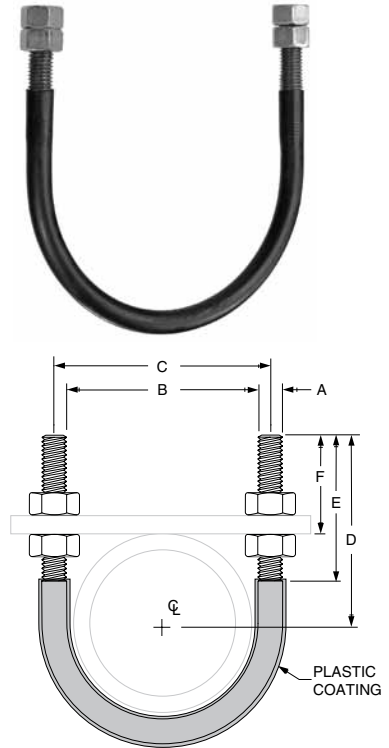


FIG. 137C: LOADS (LBS) • WEIGHTS (LBS) • DIMENSIONS (IN)								
Pipe Size	Rod Size A	Max Load	Weight	B	C	D	E	F
1/2	1/4	580	0.11	15/16	13/16	23/4	21/8	25/16
3/4			0.12	17/8	13/8			27/32
1			0.12	13/8	15/8			23/32
1 1/4	3/8	1,460	0.28	1 11/16	2 1/16	2 7/8	2 1/2	2 1/32
1 1/2			0.30	2	2 3/8	3		2 1/16
2			0.33	2 7/16	2 13/16	3 1/4		2 1/16
2 1/2	1/2	2,700	0.73	2 15/16	3 7/16	3 3/4	3	2 5/16
3			0.78	3 9/16	4 1/16	4		2 1/4
3 1/2			0.84	4 1/16	4 9/16	4 1/4		2 1/4
4			0.90	4 9/16	5 1/16	4 1/2		2 7/32
5			1.00	5 5/8	6 1/8	5		2 1/32
6	5/8	4,320	2.00	6 3/4	7 3/8	6 1/8	3 3/4	2 13/16
8			2.30	8 3/4	9 3/8	7 1/8		2 13/16

Fig. 120

Light Weight U-Bolt

Size Range: 1/2" through 10"

Material: Carbon steel

Finish: Plain or Galvanized

Service: Recommended for support, or guide of relatively light loads. Normally used with two hex nuts.

Maximum Temperature: 650° F.

Ordering: Specify pipe size x rod size, figure number and name. Hex nuts must be ordered separately.

Note: The acceptability of galvanized coatings at temperatures above 450°F is at the discretion of the end user.

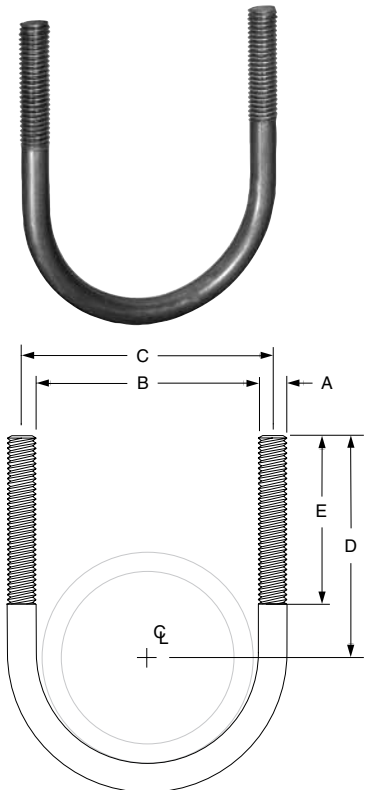


FIG. 120: LOADS (LBS) • WEIGHTS (LBS) • DIMENSIONS (IN)							
Pipe Size	Max Load	Weight	Rod Size A	B	C	D	E
1/2	580	0.06	1/4	15/16	13/16	1 15/16	1 3/4
3/4		0.07		1 1/8	1 3/8	2 1/16	
1		0.07		1 3/8	1 5/8	2 3/16	
1 1/4		0.08		1 11/16	1 15/16	2 3/8	
1 1/2		0.09		2	2 1/4	2 7/16	
2		0.10		2 7/16	2 11/16	2 11/16	
2 1/2	1,460	0.28	3/8	2 15/16	3 5/16	3 1/16	2
3		0.31		3 9/16	3 15/16	3 3/8	
3 1/2		0.35		4 1/16	4 7/16	3 5/8	
4		0.38		4 9/16	4 15/16	3 7/8	
5	2,700	0.45	1/2	5 5/8	6	4 9/16	2 1/4
6		0.95		6 3/4	7 1/4	5 1/16	
8		1.20		8 3/4	9 1/4	6 1/16	
10	4,320	2.30	5/8	10 7/8	11 1/2	7 1/4	2 1/2