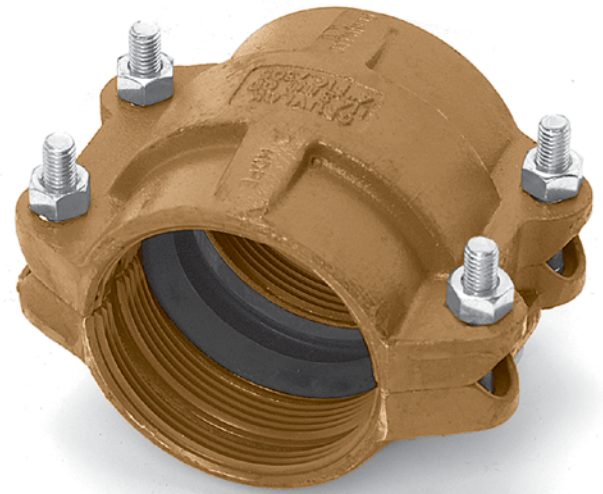


FIG. 7305

HDPE Coupling

The Gruvlok Figure 7305 couplings are designed for mechanically joining HDPE (high density polyethylene) pipe and fittings. Each coupling uses four bolts to drive the sharply machined housing teeth into the outside of the pipe. The teeth are arranged in two banks, each bank consisting of at least three rows of spiral teeth, which effectively grip the pipe, providing a secure mechanical joint with pressure capabilities exceeding that of the HDPE pipe itself. The banks of teeth are positioned away from the gasket enhancing the sealing ability of the gasket throughout its operating temperature range.

The Figure 7305 features a low profile contoured housing with a ramp along the outside diameter allowing the coupling to glide over most obstacles, while long lengths of the pipeline are being relocated. This cost effective easy to assemble mechanical joint is used to join SDR 32.5 to 7.3 wall thickness HDPE pipe conforming to ASTM D 2447, D 3000, D 3035, or F 714 and eliminates the need for costly fusion equipment.

**MATERIAL SPECIFICATIONS****HOUSING:**

Ductile Iron conforming to ASTM A 536, Grade 65-45-12

COATING:

Rust inhibiting paint – Color: Orange

Other Colors Available (IE: RAL3000 and RAL9000)

For other Coating requirements contact an Anvil Representative.

ANSI BOLTS & HEAVY HEX NUTS:

Heat treated, zinc electroplated, carbon steel oval-neck track bolts conforming to ASTM A 183. Zinc electroplated carbon steel heavy hex nuts conforming to ASTM A 563 Grade A or Grade B, or J995 Grade 2.

GASKETS: Properties in accordance with ASTM D 2000**Grade E EPDM** (Green color code)

Service Temperature Range: -30°F to 230°F (-34°C to 110°C).

Recommended for water service, dilute acids, alkaline solutions, oil free air and many chemical services.

NOT FOR USE IN PETROLEUM APPLICATIONS.

Grade T Nitrile (Orange color code)

Service Temperature Range: -20°F to 180°F (-29°C to 82°C).

Recommended for petroleum applications, air with oil vapor, vegetable and mineral oils.

NOT FOR USE WITH HOT WATER OR HOT AIR.

For specific chemical applications, reference the Gruvlok Gasket Recommendations section of the Gruvlok catalog.

WARNING:

1. Gruvlok products for HDPE pipe must be installed using Gruvlok Xtreme™ Temperature Lubricant.
2. The gasket temperature rating may exceed the manufacturer temperature rating for the HDPE pipe. Consult the HDPE pipe manufacturer for the temperature and pressure ratings.

FIG. 7305

HDPE Coupling

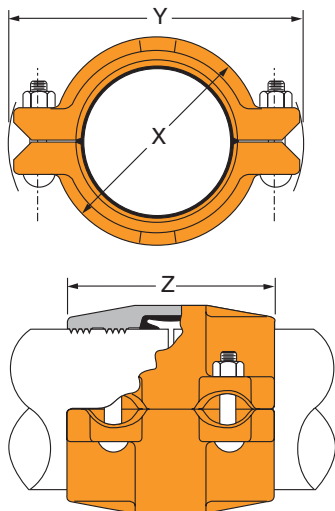


FIGURE 7305 HDPE COUPLING

Nominal Size	O.D.	Coupling Dimensions			Coupling Bolts		Approx. Wt. Ea.
		X	Y	Z	Qty.	Size	
In./DN(mm)	In./mm	In./mm	In./mm	In./mm		In.	Lbs./Kg
2	2.375	3 ³ / ₈	5 ¹ / ₂	4 ⁵ / ₈	4	1/2 x 2 ³ / ₈	4.5
50	60.3	86	140	117		-	2.0
3	3.500	4 ⁵ / ₈	6 ³ / ₄	4 ⁵ / ₈	4	1/2 x 3	8.5
80	88.9	117	171	117		-	3.9
4	4.500	5 ¹ / ₄	8	5 ³ / ₄	4	1/2 x 3	12
100	114.3	133	203	146		-	5.4
6	6.625	7 ¹ / ₂	11	5 ⁷ / ₈	4	5/8 x 3 ¹ / ₂	18
150	168.3	191	279	149		-	8.2
8	8.625	10	13 ¹ / ₄	6	4	5/8 x 3 ¹ / ₂	30
200	219.1	254	337	152		-	13.6
10	10.750	12	15 ³ / ₄	6 ¹ / ₂	4	3/4 x 4 ³ / ₄	43
250	273.1	305	400	165		-	19.5
12	12.750	14 ³ / ₈	17 ⁷ / ₈	7 ¹ / ₄	4	3/4 x 4 ³ / ₄	58
300	323.9	365	454	184		-	26.3

HDPE PIPE DIMENSIONAL SPECIFICATIONS

Nominal Size	O.D. Actual	Tolerance +/-	Out Of Roundness Tolerance +/-	Pipe Wall Thickness						
				SDR 7.3	SDR 9	SDR 11	SDR 15.5	SDR 17	SDR 21	SDR 32.5
In./DN(mm)	In./mm	In./mm	In./mm	In./mm	In./mm	In./mm	In./mm	In./mm	In./mm	In./mm
2	2.375	0.006	0.035	0.325	0.264	0.216	0.153	0.140	0.113	-
50	60.3	0.15	0.89	8.3	6.7	5.5	3.9	3.6	2.9	
3	3.500	0.016	0.040	0.479	0.389	0.318	0.226	0.206	0.167	0.108
80	88.9	0.41	1.02	12.2	9.9	8.1	5.7	5.2	4.2	2.7
4	4.500	0.020	0.040	0.616	0.500	0.409	0.290	0.265	0.214	0.138
100	114.3	0.51	1.02	15.6	12.7	10.4	7.4	6.7	5.4	3.5
6	6.625	0.030	0.050	0.908	0.736	0.602	0.427	0.327	0.265	0.204
150	168.3	0.76	1.27	23.1	18.7	15.3	10.8	8.3	6.7	5.2
8	8.625	0.039	0.075	1.182	0.958	0.784	0.556	0.507	0.340	0.265
200	219.1	0.99	1.91	30.0	24.3	19.9	14.1	12.9	8.6	6.7
10	10.750	0.048	0.075	1.473	1.194	0.977	0.694	0.632	0.512	0.331
250	273.1	1.22	1.91	37.4	30.3	24.8	17.6	16.1	13.0	8.4
12	12.750	0.057	0.075	1.747	1.417	1.159	0.823	0.750	0.607	0.392
300	323.9	1.45	1.91	44.4	36.0	29.4	20.9	19.1	15.4	10.0

1. Per ASTM F 714

2. Per ASTM D 2447 and D 3035

See Installation & Assembly directions on page 186.