



FITTINGS W/ DRESSER® EFV'S

PA ELIMINATORS with Dresser® Medium Capacity Excess Flow Valves

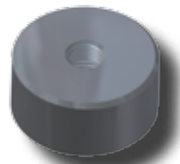
DRESSER® MEDIUM CAPACITY EXCESS FLOW VALVES					
EFV SIZE	OUTLET (PE SIZE)	WALL	MAIN SIZE	PART NUMBER 5864	PART NUMBER 5764
				1/2" CR PUNCH	13/16" CR PUNCH
DRESSER® MEDIUM CAPACITY	1/2" CTS (5/8" OD)	.090	1 1/4"	5864-15-1004-78	N/A
			2"	5864-17-1004-78	5764-17-1004-78
			3"	5864-19-1004-78	5764-19-1004-78
			4"	5864-21-1004-78	5764-21-1004-78
			6"	5864-24-1004-78	5764-24-1004-78
			8"	N/A	5764-26-1004-78
		.062	1 1/4"	5864-15-1004-79	N/A
			2"	5864-17-1004-79	5764-17-1004-79
			3"	5864-19-1004-79	5764-19-1004-79
			4"	5864-21-1004-79	5764-21-1004-79
			6"	5864-24-1004-79	5764-24-1004-79
			8"	N/A	5764-26-1004-79
	1" CTS (1 1/8" OD)	.099/.101	1 1/4"	5864-15-1008-78	N/A
			2"	5864-17-1008-78	5764-17-1008-78
			3"	5864-19-1008-78	5764-19-1008-78
			4"	5864-21-1008-78	5764-21-1008-78
			6"	5864-24-1008-78	5764-24-1008-78
			8"	N/A	5764-26-1008-78
		.090	1 1/4"	5864-15-1008-79	N/A
			2"	5864-17-1008-79	5764-17-1008-79
			3"	5864-19-1008-79	5764-19-1008-79
			4"	5864-21-1008-79	5764-21-1008-79
			6"	5864-24-1008-79	5764-24-1008-79
			8"	N/A	5764-26-1008-79
	3/4" IPS	SDR-11 (.095)	1 1/4"	5864-15-1013-78	N/A
			2"	5864-17-1013-78	5764-17-1013-78
			3"	5864-19-1013-78	5764-19-1013-78
			4"	5864-21-1013-78	5764-21-1013-78
6"			5864-24-1013-78	5764-24-1013-78	
8"			N/A	5764-26-1013-78	
1" IPS	SDR-11 (.119)	1 1/4"	5864-15-1014-78	N/A	
		2"	5864-17-1014-78	5764-17-1014-78	
		3"	5864-19-1014-78	5764-19-1014-78	
		4"	5864-21-1014-78	5764-21-1014-78	
		6"	5864-24-1014-78	5764-24-1014-78	
		8"	N/A	5764-26-1014-78	



- For sizes not listed, contact Continental Industries.
- Con-Stab ID Seal® Eliminators rated at 125 psig.
- Recommended accessories;
 - 33-5505-00 ~ Combination Tapping Tool & Saddle Bolt "T" Wench for 1 1/4" thru 6" IPS Eliminators
 - 33-5505-01 ~ Combination Tapping Tool & Saddle Bolt "T" Wench for 3" thru 8" IPS Eliminators
 - 33-5508-00 ~ Test Plug Cap for Eliminator Saddles
- For Protective Sleeves, see page 29.



33-5505-00 & 33-5505-01 ~ Combination Tapping Tool & Saddle Bolt "T" Wench



33-5508-00 ~ Test Plug Cap for Eliminator Saddles with 1/4" FPT for attachment of quick connect coupling

