

## Fig. 175

### Roller Chair

**Size Range:** 2" through 30" pipe

**Material:** Cast iron roll, steel chair, roll rod, bolts and hex nuts

**Finish:** Plain, Galvanized or Resilient Coated

**Maximum Temperature:** 450° F at roller, 300° F at resilient coated roller.

**Service:** For support of pipe where longitudinal movement due to expansion and contraction may occur, but where no vertical adjustment is required.

**Approvals:** Complies with Federal Specification A-A-1192A (Type 44), WW-H-171-E (Type 45), ANSI/MSS SP-69 and MSS SP-58 (Type 44).

**Installation:** Two bolts and nuts provide anchorage to floor or top of steel beam or bracket or chair may be welded to supporting steel.

**Features:** Advantages of pipe rollers with a protective resilient coated covering.

- Non conductive pipe rollers - prevent the passing of current from pipeline to structure.
- Corrosion resistant - for protection against severe weather conditions, moderate corrosive conditions such as marine atmospheres and weather resistant to ultra-violet radiation.
- Low coefficient of friction between pipe and resilient coated pipe roller.

**How to size:**

- (1) If roll is to support bare pipe, select the size directly from nominal pipe size (see below).
- (2) If used with pipe covering protection saddle, see page 123 for size of pipe roll.
- (3) If roll is to support covered pipe, the O.D. of the covering should not be greater than the O.D. of the pipe for which the roll was designed.

**Ordering:** Specify size of roll, figure number, name and finish. Be certain to order oversized rolls when insulation and protection saddles are required.

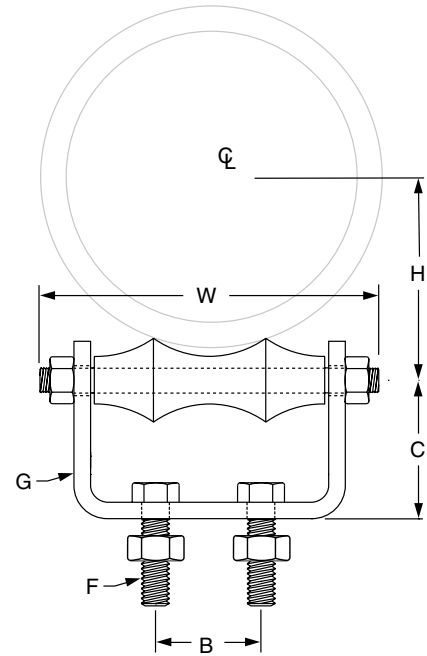


FIG. 175: LOADS (LBS) • WEIGHT (LBS) • DIMENSIONS (IN)								
Pipe Size	Max Load	Weight	W	B	C	F	G Width	H
2	600	1.1	4	1 1/4	1 1/2	3/8 x 1 1/2	1 1/4	1 5/8
2 1/2	660	1.4	4 7/8		1 5/8			1 15/16
3	700	1.6	5 3/8	1 3/4	2 1/4			
3 1/2	750	2.6	6 1/8	2	2 1/16	1/2 x 1 1/2	1 1/2	2 9/16
4		2.9	6 5/8		2 5/16			2 13/16
5		3.7	7 7/8		3			2 1/2
6	1,070	5.9	9 1/4	3 3/8	2 3/4	5/8 x 1 1/2	2	4
8	1,350	9.0	11 5/8	3 3/8	3			5 1/8
10	1,730	13.8	14 1/8	5 1/4	3 5/8			6 3/8
12	2,400	18.9	16 1/8	5 1/2	4 1/8	5/8 x 2	2	7 7/16
14	3,130	28.07	18 3/4	6 1/2	4 11/16			3/4 x 2
16	3,970	34.93	21	8 1/4	5 3/8	3/4 x 2 1/2	3	9 3/8
18	4,200	44.35	23 1/8	9 1/4	6			10 7/16
20	4,550	56.34	24 5/8	10 1/4	6 1/2			11 5/8
24	6,160	87.52	29 3/8	12 1/4	7 7/8	7/8 x 3 1/2	4	14
30	7,290	151.25	34 13/16	15 3/8	8 3/4			6

DI/CI ROLL SIZING	
DI/CI Pipe Size	Fig. 175 Roller Size
3	4
4	5
6	6
8	8
10	10
12	14
14	16
16	18
18	20
20	24
24	30
30	No Recom.

- Straps
- Pipe Supports
- Trapeze
- Pipe Shields & Saddles
- Pipe Roll**
- Pipe Guides & Slides
- Sway Brace Seismic
- Spring Hangers
- Constant Supports
- Vibration Control & Sway Brace
- Sway Strut Assembly
- Snubbers
- Special Design Products
- Application Examples
- Master Format 3 Part Specs.
- Technical Data
- Index