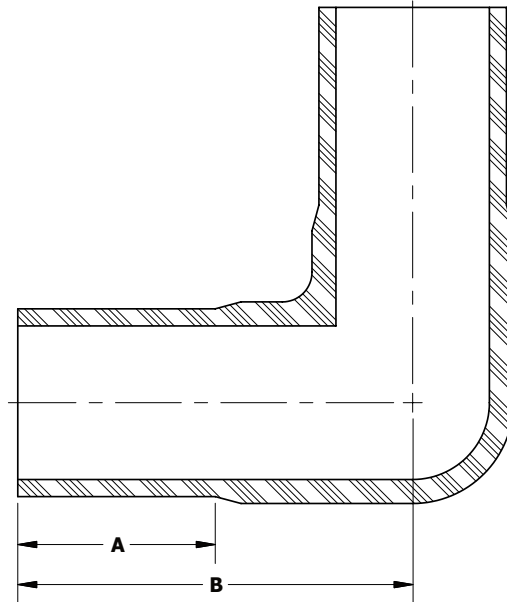


Butt Fusion Fittings



90° Elbow

BUTT FUSION
2406/2708 MDPE



| 90° Butt Fusion Elbow - 2406/2708 MDPE | | | |
|--|------------|------------------|-------------|
| PE Size | SDR / WALL | Part Number | Package Qty |
| 1 1/4" IPS | DR-10 | 4631-51-0615-00‡ | 10 |
| 2" IPS | DR-11 | 4631-51-0617-00‡ | 10 |
| 3 IPS | DR-11 | 4631-51-0619-00 | 2 |
| 4" IPS | DR-11 | 4631-51-0621-00‡ | 2 |
| 6" IPS | DR-11 | 4631-51-0624-00‡ | 1 |

- For sizes not listed, contact Continental Industries.
- ‡ = IAPMO/UPC Listed

| Butt Fusion 90° Elbow Dimensions | | |
|----------------------------------|-------|-------|
| Part Number | A | B |
| 4631-51-0615-00 | 2.500 | 4.000 |
| 4631-51-0617-00 | 2.500 | 4.000 |
| 4631-51-0619-00 | 3.000 | 5.500 |
| 4631-51-0621-00 | 3.000 | 6.000 |
| 4631-51-0624-00 | 4.000 | 8.000 |

- All values are nominal dimensions.