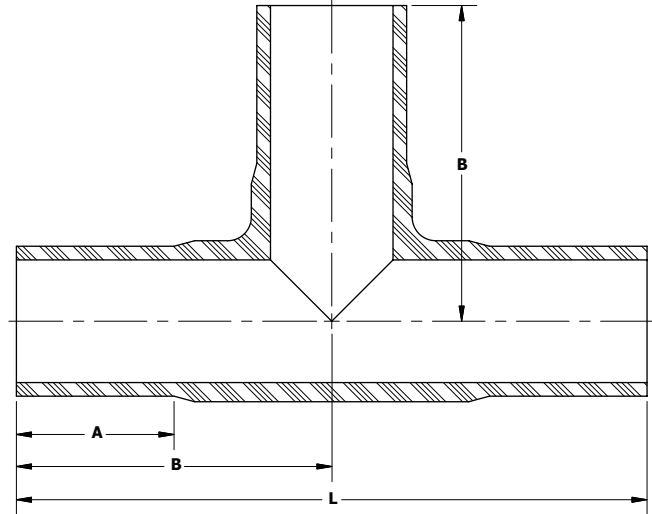
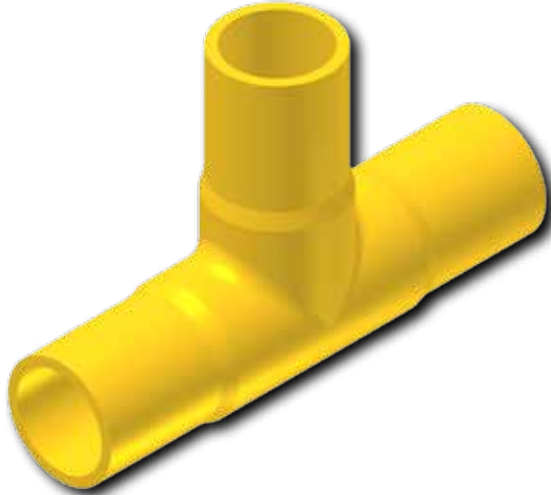


# Butt Fusion Fittings



## Tee

**BUTT FUSION**  
2406/2708 MDPE



Butt Fusion Tee - 2406/2708 MDPE			
PE Size	SDR / WALL	Part Number	Package Qty
1 1/4" IPS	DR-10	4631-50-0615-00	5
2" IPS	DR-11	4631-50-0617-00‡	5
3 IPS	DR-11	4631-50-0619-00	2
4" IPS	DR-11	4631-50-0621-00‡	1
6" IPS	DR-11	4631-50-0624-00‡	1

- For sizes not listed, contact Continental Industries.
- ‡ = IAPMO/UPC Listed

Butt Fusion Tee Dimensions			
Part Number	A	B	L
4631-50-0615-00	2.500	4.000	8.000
4631-50-0617-00	2.500	4.250	8.500
4631-50-0619-00	3.000	5.750	11.375
4631-50-0621-00	3.000	6.250	12.250
4631-50-0624-00	4.000	8.250	16.250

- All values are nominal dimensions.