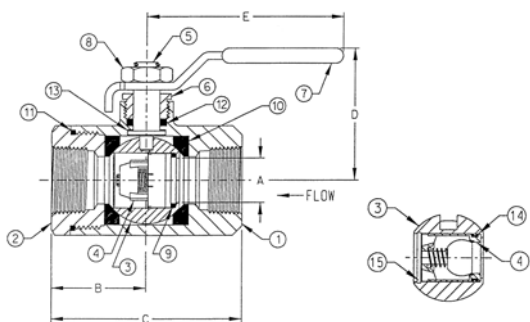


COMMERCIAL PRODUCTS CATALOG

Specialty Valves

70-100-BC SERIES



BALL VALVES WITH INTEGRAL CHECK, FEMALE X FEMALE

Combines two functions in a single design: positive shut-off and bubble tight check capabilities. The BC Series is a unidirectional version of the industry standard Apollo 70 Series ball valve.

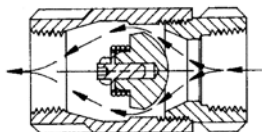
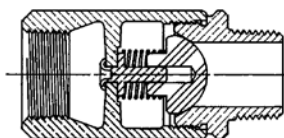
FEATURES

- Blowout-proof stem
- RPTFE seats and stem packing
- Adjustable packing gland
- ASTM B584 Bronze
- Nitrile elastomers in Acetal check housing
- Positive shut-off and bubble-tight check capability
- 250 psi @ 200°F max

Model Number	Size (in.)	Dimensions (in.)					Wt.
		A	B	C	D	E	
70-103-BC	1/2"	0.50	1.12	2.25	1.80	3.87	0.63
70-104-BC	3/4"	0.68	4.50	3.00	2.12	4.87	1.33
70-105-BC	1"	0.87	1.68	3.37	2.25	4.87	1.77
70-106-BC	1-1/4"	1.00	2.00	4.00	2.73	5.50	3.29
70-107-BC	1-1/2"	1.25	2.18	4.37	3.09	8.00	4.63
70-108-BC	2"	1.50	2.34	4.68	3.28	8.00	6.01

In-Line Check Valves

CVB (61-100 & 61-200) SERIES



BALL CONE® CHECK VALVES

Patented design (U.S. Pat. No. 4,172,465) with reinforced RPTFE ball-cone check and stainless steel springs, these valves offer reliable protection against reverse flow and exceptional resistance to chemicals and corrosion.

FEATURES

- Standard 1/2" psi opening pressure
- Tight shut-off with liquid media
- Male and female NPT inlet options
- 400 psig CWP @ 100°F
- 125 psig steam rating @ 350°F max
- Straight-through design minimizes pressure loss
- ASTM B584 Bronze
- American-made construction
- **Lead Free** option (61LF)(NSF 61/NSF 372)

Bronze FNPT x FNPT	LF Bronze FNPT x FNPT	Bronze MNPT x FNPT	Size (in.)	Wt. Ea.	Cv
61-101-01	61LF-101-01	61-201-01	1/4	.38	.85
61-102-01	61LF-102-01	61-202-01	3/8	.38	1.2
61-103-01	61LF-103-01	61-203-01	1/2	.38	1.4
61-104-01	61LF-104-01	61-204-01	3/4	.75	3.5
61-105-01	61LF-105-01	61-205-01	1	1.45	6.0
61-106-01	61LF-106-01	61-206-01	1 1/4	2.75	44
61-107-01	61LF-107-01	61-207-01	1 1/2	3.94	65
61-108-01	61LF-108-01	61-208-01	2	6.30	81
61-109-01	61LF-109-01	-	2 1/2	14.00	175
61-100-01	61LF-100-01	-	3	16.65	265

Precautionary Note: Not recommended for use with reciprocating pumps and similar applications which may induce repetitious vibrations. Low flow rates which do not fully open the valve, may result in undesirable noise and premature valve failure. Upstream flow disturbances, which create turbulence, may also result in rapid wear. Therefore, it is recommended that a minimum of 10 diameters of straight pipe be provided between the check valve and any upstream flow disturbances such as pumps, control valves, elbows, etc.