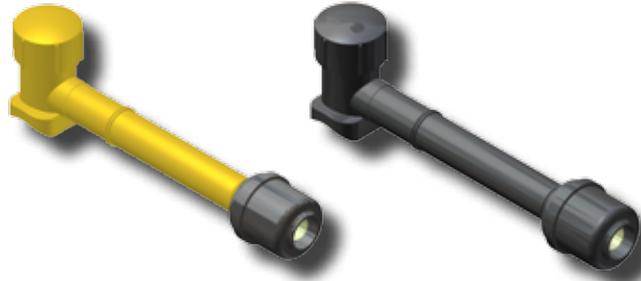


FITTINGS W/ DRESSER® EFV'S

CON-STAB ID SEAL® Fusion Saddle Tees with Dresser® High Capacity Excess Flow Valves



DRESSER® HIGH CAPACITY EXCESS FLOW VALVES										
EFV SIZE	OUTLET (PE SIZE)	WALL	Main Size	PUNCH SIZE	PART NUMBER (3408/4710) (ROUND BASE)	PART NUMBER (2406) (ROUND BASE)	PART NUMBER (3408/4710) (RECTANGULAR BASE)	PART NUMBER (2406) (RECTANGULAR BASE)		
DRESSER® HIGH CAPACITY	1" CTS (1 1/8" OD)	.099/.101	1 1/4"	.800"	3259-15-3908-80	3369-15-4008-80	3259-15-4108-80	3369-15-4208-80		
			2"	.800"	3259-17-3908-80	3369-17-4008-80	3259-17-4108-80	3369-17-4208-80		
			3"	.800"	3259-19-3908-80	3369-19-4008-80	3259-19-4108-80	3369-19-4208-80		
			4"	.800"	3259-21-3908-80	3369-21-4008-80	3259-21-4108-80	3369-21-4208-80		
			6"	.800"	3259-24-3908-80	3369-24-4008-80	3259-24-4108-80	3369-24-4208-80		
			8"	.800"	3259-26-3908-80	3369-26-4008-80	3259-26-4108-80	3369-26-4208-80		
			.090	1 1/4"	.800"	3259-15-3908-81	3369-15-4008-81	3259-15-4108-81	3369-15-4208-81	
				2"	.800"	3259-17-3908-81	3369-17-4008-81	3259-17-4108-81	3369-17-4208-81	
		3"		.800"	3259-19-3908-81	3369-19-4008-81	3259-19-4108-81	3369-19-4208-81		
		4"		.800"	3259-21-3908-81	3369-21-4008-81	3259-21-4108-81	3369-21-4208-81		
		6"		.800"	3259-24-3908-81	3369-24-4008-81	3259-24-4108-81	3369-24-4208-81		
		8"		.800"	3259-26-3908-81	3369-26-4008-81	3259-26-4108-81	3369-26-4208-81		
		1/2" IPS		SDR-9.33 (.090)	1 1/4"	.800"	3259-15-3912-80	3369-15-4012-80	3259-15-4112-80	3369-15-4212-80
					2"	.800"	3259-17-3912-80	3369-17-4012-80	3259-17-4112-80	3369-17-4212-80
			3"		.800"	3259-19-3912-80	3369-19-4012-80	3259-19-4112-80	3369-19-4212-80	
			4"		.800"	3259-21-3912-80	3369-21-4012-80	3259-21-4112-80	3369-21-4212-80	
	6"		.800"		3259-24-3912-80	3369-24-4012-80	3259-24-4112-80	3369-24-4212-80		
	8"		.800"		3259-26-3912-80	3369-26-4012-80	3259-26-4112-80	3369-26-4212-80		
	3/4" IPS		SDR-11 (.095)		1 1/4"	.800"	3259-15-3913-80	3369-15-4013-80	3259-15-4113-80	3369-15-4213-80
					2"	.800"	3259-17-3913-80	3369-17-4013-80	3259-17-4113-80	3369-17-4213-80
		3"		.800"	3259-19-3913-80	3369-19-4013-80	3259-19-4113-80	3369-19-4213-80		
		4"		.800"	3259-21-3913-80	3369-21-4013-80	3259-21-4113-80	3369-21-4213-80		
		6"		.800"	3259-24-3913-80	3369-24-4013-80	3259-24-4113-80	3369-24-4213-80		
		8"		.800"	3259-26-3913-80	3369-26-4013-80	3259-26-4113-80	3369-26-4213-80		
	1" IPS	SDR-11 (.119)	1 1/4"	.800"	3259-15-3914-80	3369-15-4014-80	3259-15-4114-80	3369-15-4214-80		
			2"	.800"	3259-17-3914-80	3369-17-4014-80	3259-17-4114-80	3369-17-4214-80		
			3"	.800"	3259-19-3914-80	3369-19-4014-80	3259-19-4114-80	3369-19-4214-80		
			4"	.800"	3259-21-3914-80	3369-21-4014-80	3259-21-4114-80	3369-21-4214-80		
6"			.800"	3259-24-3914-80	3369-24-4014-80	3259-24-4114-80	3369-24-4214-80			
8"			.800"	3259-26-3914-80	3369-26-4014-80	3259-26-4114-80	3369-26-4214-80			

- For sizes not listed, contact Continental Industries.
- Con-Stab ID Seal® fittings rated at 125 psig.
- Recommended accessories;
 - Continental's Bladed Chamfering Tool. See page 28 for size combinations available.
- For Protective Sleeves, see page 29.

