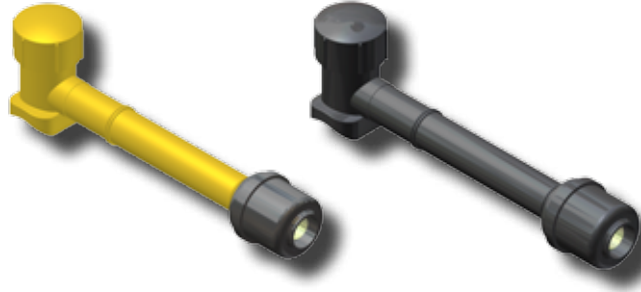


FITTINGS W/ UMAC® EFV'S



CON-STAB ID SEAL® Fusion Saddle Tees with UMAC® Series 1800 Excess Flow Valves



UMAC® 1800 SERIES EXCESS FLOW VALVES									
EFV SIZE	OUTLET (PE SIZE)	WALL	Main Size	PUNCH SIZE	PART NUMBER (3408/4710) (ROUND BASE)	PART NUMBER (2406) (ROUND BASE)	PART NUMBER (3408/4710) (RECTANGULAR BASE)	PART NUMBER (2406) (RECTANGULAR BASE)	
UMAC® SERIES 1800	1" CTS (1 1/8" OD)	.099/.101	1 1/4"	.800"	3259-15-3908-74	3369-15-4008-74	3259-15-4108-74	3369-15-4208-74	
			2"	.800"	3259-17-3908-74	3369-17-4008-74	3259-17-4108-74	3369-17-4208-74	
			3"	.800"	3259-19-3908-74	3369-19-4008-74	3259-19-4108-74	3369-19-4208-74	
			4"	.800"	3259-21-3908-74	3369-21-4008-74	3259-21-4108-74	3369-21-4208-74	
			6"	.800"	3259-24-3908-74	3369-24-4008-74	3259-24-4108-74	3369-24-4208-74	
			8"	.800"	3259-26-3908-74	3369-26-4008-74	3259-26-4108-74	3369-26-4208-74	
		.090	1 1/4"	.800"	3259-15-3908-75	3369-15-4008-75	3259-15-4108-75	3369-15-4208-75	
			2"	.800"	3259-17-3908-75	3369-17-4008-75	3259-17-4108-75	3369-17-4208-75	
			3"	.800"	3259-19-3908-75	3369-19-4008-75	3259-19-4108-75	3369-19-4208-75	
			4"	.800"	3259-21-3908-75	3369-21-4008-75	3259-21-4108-75	3369-21-4208-75	
			6"	.800"	3259-24-3908-75	3369-24-4008-75	3259-24-4108-75	3369-24-4208-75	
			8"	.800"	3259-26-3908-75	3369-26-4008-75	3259-26-4108-75	3369-26-4208-75	
		1/2" IPS	SDR-9.33 (.090)	1 1/4"	.800"	3259-15-3912-74	3369-15-4012-74	3259-15-4112-74	3369-15-4212-74
				2"	.800"	3259-17-3912-74	3369-17-4012-74	3259-17-4112-74	3369-17-4212-74
	3"			.800"	3259-19-3912-74	3369-19-4012-74	3259-19-4112-74	3369-19-4212-74	
	4"			.800"	3259-21-3912-74	3369-21-4012-74	3259-21-4112-74	3369-21-4212-74	
	6"			.800"	3259-24-3912-74	3369-24-4012-74	3259-24-4112-74	3369-24-4212-74	
	8"			.800"	3259-26-3912-74	3369-26-4012-74	3259-26-4112-74	3369-26-4212-74	
	3/4" IPS	SDR-11 (.095)	1 1/4"	.800"	3259-15-3913-74	3369-15-4013-74	3259-15-4113-74	3369-15-4213-74	
			2"	.800"	3259-17-3913-74	3369-17-4013-74	3259-17-4113-74	3369-17-4213-74	
			3"	.800"	3259-19-3913-74	3369-19-4013-74	3259-19-4113-74	3369-19-4213-74	
			4"	.800"	3259-21-3913-74	3369-21-4013-74	3259-21-4113-74	3369-21-4213-74	
			6"	.800"	3259-24-3913-74	3369-24-4013-74	3259-24-4113-74	3369-24-4213-74	
			8"	.800"	3259-26-3913-74	3369-26-4013-74	3259-26-4113-74	3369-26-4213-74	
	1" IPS	SDR-11 (.119)	1 1/4"	.800"	3259-15-3914-74	3369-15-4014-74	3259-15-4114-74	3369-15-4214-74	
			2"	.800"	3259-17-3914-74	3369-17-4014-74	3259-17-4114-74	3369-17-4214-74	
			3"	.800"	3259-19-3914-74	3369-19-4014-74	3259-19-4114-74	3369-19-4214-74	
			4"	.800"	3259-21-3914-74	3369-21-4014-74	3259-21-4114-74	3369-21-4214-74	
6"			.800"	3259-24-3914-74	3369-24-4014-74	3259-24-4114-74	3369-24-4214-74		
8"			.800"	3259-26-3914-74	3369-26-4014-74	3259-26-4114-74	3369-26-4214-74		

- For sizes not listed, contact Continental Industries.
- Con-Stab ID Seal® fittings rated at 125 psig.
- Recommended accessories;
 - Continental's Bladed Chamfering Tool. See page 28 for size combinations available.
- For Protective Sleeves, see page 29.

