

## Fig. 600

### Socket Clamp for Ductile Iron or Cast Iron Pipe

**Size Range:** 3" through 24" pipe

**Material:** Two carbon steel halfbands and two bolts and nuts.

**Finish:** Plain or Galvanized

**Service:** Clamps joints of socket fittings together to prevent distortion of pipe line under excessive water pressure.

**Approvals:** Complies with Federal Specification A-A-1192A (Type 8), ANSI/MSS SP-69 and MSS SP-58 (Type 8).

**Features:** An economical method of anchoring joints of socket fittings when used on other than fire protection work.

**Ordering:** Specify pipe size, figure number, name and finish.

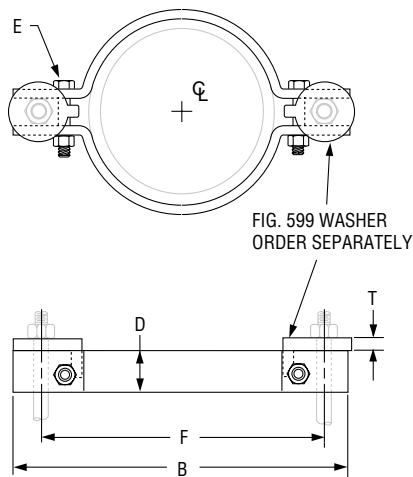


## Fig. 599

### Socket Clamp Washer

Two cast iron or steel washers, Fig. 599, are used with each Fig. 600 socket clamp and these must be ordered separately.

**Ordering:** Specify washer size, figure number, name and finish.



**FIG. 600, FIG. 599: WEIGHT (LBS) • DIMENSIONS (IN)**

D.I./C.I. Pipe Size	Weight		Pipe O.D.	B	D Width	Bolt Dia. E	F	T	Fig. 599: Washer Rod Dia.
	Fig. 600: Clamp	Fig. 599: Washer							
3	9.7	1.2	4	11 <sup>5</sup> / <sub>8</sub>	2	5/8	8 <sup>5</sup> / <sub>8</sub>	5/8	3/4
4	11.0		5	12 <sup>1</sup> / <sub>8</sub>			9 <sup>3</sup> / <sub>4</sub>		
6	12.7		7 <sup>1</sup> / <sub>16</sub>	14 <sup>3</sup> / <sub>8</sub>			12		
8	14.5		9 <sup>3</sup> / <sub>16</sub>	16 <sup>5</sup> / <sub>8</sub>			14 <sup>1</sup> / <sub>4</sub>		
10	16.3		11 <sup>3</sup> / <sub>8</sub>	18 <sup>7</sup> / <sub>8</sub>			16 <sup>1</sup> / <sub>2</sub>		
12	18.3		13 <sup>1</sup> / <sub>2</sub>	21 <sup>1</sup> / <sub>4</sub>			18 <sup>7</sup> / <sub>8</sub>		
14	48.7	2.7	15 <sup>3</sup> / <sub>4</sub>	25 <sup>1</sup> / <sub>2</sub>	3	7/8	23	1 <sup>1</sup> / <sub>8</sub>	1 <sup>1</sup> / <sub>4</sub>
16	69.2		17 <sup>7</sup> / <sub>8</sub>	28	4	1	25 <sup>1</sup> / <sub>2</sub>		
18	82.0	4.5	20	31 <sup>1</sup> / <sub>2</sub>	4 <sup>1</sup> / <sub>2</sub>	1 <sup>1</sup> / <sub>4</sub>	27 <sup>5</sup> / <sub>8</sub>		
20	97.5		22 <sup>1</sup> / <sub>8</sub>	33 <sup>3</sup> / <sub>4</sub>			29 <sup>3</sup> / <sub>4</sub>		
24	132.0	6.8	26 <sup>3</sup> / <sub>8</sub>	39 <sup>3</sup> / <sub>4</sub>	5	1 <sup>1</sup> / <sub>2</sub>	35 <sup>1</sup> / <sub>4</sub>	1 <sup>1</sup> / <sub>4</sub>	