

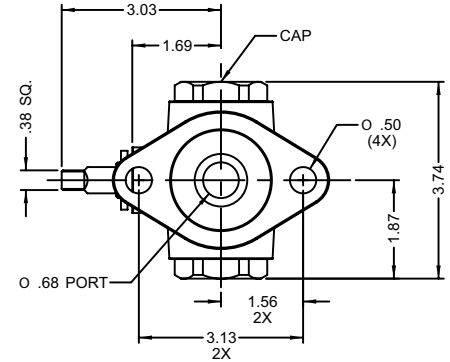
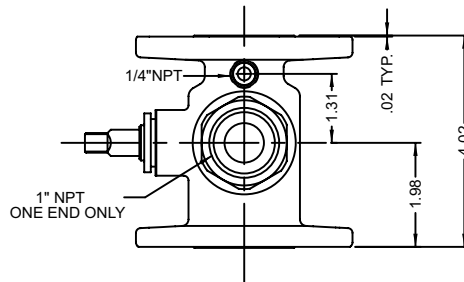
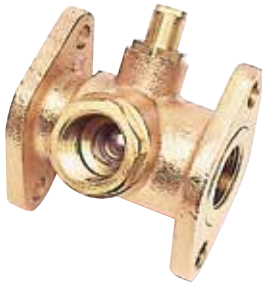
HYDRONIC & STEAM HEATING

Specialty Valves

78-970-01 SERIES

HYDRONIC 3-WAY, 4-SEATED BALL VALVE WITH FLANGED PUMP CONNECTIONS

Can be used in hydronic geothermal or other HVAC applications where diversion of flow is required, along with positive shut-off. Designed to connect directly to circulator pump flange connections.



Water Heater Accessories

EXV (78-RV) SERIES

BRONZE SHUT-OFF VALVE WITH THERMAL EXPANSION CONTROL VALVE

The Apollo® 78RV combines thermal expansion protection and water heater shut-off in a single, simple installation. They're space saving and a less costly alternative to large expansion tanks.

FEATURES

- Solder, NPT, and Pex ball valve connections
- Corrosion resistant, all bronze materials
- Chrome plated ball
- Thermal relief valve is factory preset and sealed
- Relief valve features soft seat and Stainless Steel spring
- Relief valve available with hose barb fitting, 1/2" Pex fitting, 3/8" compression fitting or 1/2" combination sweat/thread fitting
- IAPMO IGC 128-2008 approval
- Temperature rating: 210°F max
- Meets CSA B125.1 & B125.3 requirements
- City of Los Angeles registered
- Multiple relief pressure kit options
- **Lead Free** option (78LF-RV)



Designate Lead Free by adding **LF** to Series No. (ex. **78LF-414-RV**)

NUMBERING SYSTEM

78	-X	-X	-X	-RV
SERIES	SIZE	SET PRESSURE	RELIEF VALVE CONNECTION	
78 = Standard	3 = 3/4 SWT	0 = 125 psig	4 = 3/8" Hose barb	
78LF = Lead Free	4 = 3/4 THD	1 = 100 psig	5 = 1/2" Pex	
	7 = 3/4 PEX	2 = 80 psig	6 = 3/8" Compression fitting	
			7 = 1/2" NPT/SWT fitting	

EXAMPLES:

78-306-RV = 3/4" Sweat Connections, 125 psig Set Pressure, 3/8" Compression Connection on Relief Valve.

78LF-414-RV = Lead Free, 3/4" Threaded Connections, 100 psig Set Pressure, 3/8" Hose Barb Connection on Relief Valve.