

Fig. 128R

Rod Threaded, Ceiling Flange

Size Range: $\frac{3}{8}$ " and $\frac{1}{2}$ "

Material: Malleable iron

Finish: Plain or Galvanized

Service: Recommended for attachment to wood beams or ceiling.

Ordering: Specify rod size, figure number, name and finish.

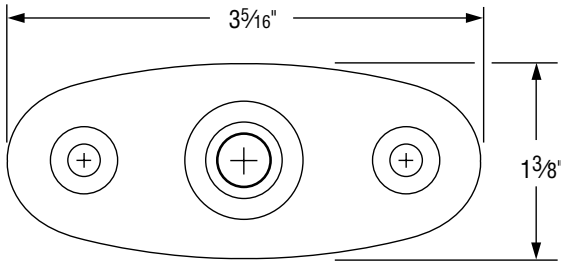
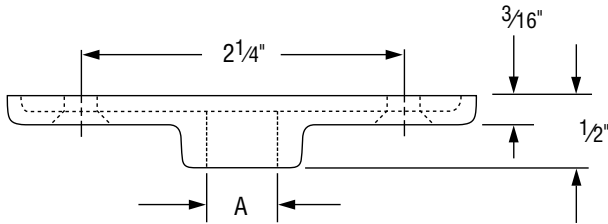


FIG. 128R: LOAD (LBS) • WEIGHT (LBS) • DIMENSIONS (IN)				
Rod Size A	Max Load	Weight	Screws (not included)	
			Quantity	Size No.
$\frac{3}{8}$	180	0.16	2	12
$\frac{1}{2}$				

Table of Contents

General Notes

Copper Tubing Hangers

Stainless Steel Hangers

CPVC Pipe Hangers

Pipe Rings

Clevis Hangers

Steel Pipe Clamps

Socket Clamps

Beam Clamps

Structural Attachments

Brackets

Ceiling Plates & Flanges

Concrete Inserts & Attachments

Hanger Rods

Rod Attachments

Bolts, Nuts, Pins & U-Bolts