

Fig. 153

Pipe Hanger Flange

Size Range: $\frac{3}{8}$ " through $\frac{3}{4}$ "

Material: Malleable iron

Finish: Plain

Service: Recommended for suspension of pipe lines or conduit from level ceilings.

Approvals: UL, ULC Listed and FM Approved (Sizes $\frac{3}{8}$ " and $\frac{1}{2}$ ").

Installation: Flange size $\frac{3}{8}$ " has two holes, sizes $\frac{1}{2}$ ", $\frac{5}{8}$ ", and $\frac{3}{4}$ " have three holes.

Features:

- Provides vertical adjustment up to 1".
- Good appearance.

Ordering: Specify rod size, figure number and name.

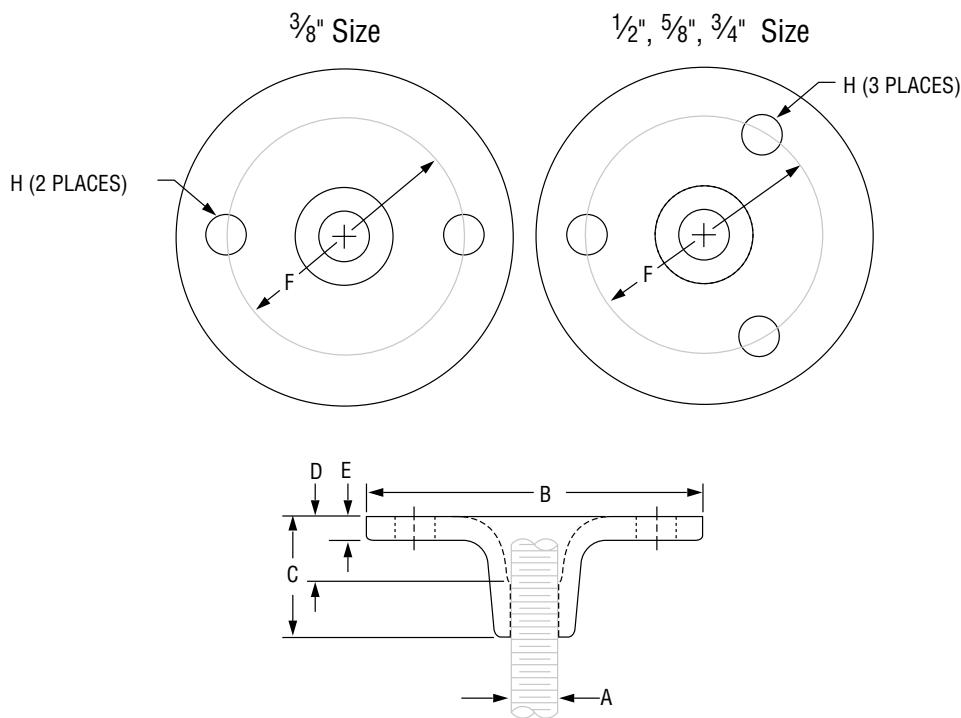


FIG. 153: LOAD (LBS) • WEIGHT (LBS) • DIMENSIONS (IN)

Rod Size A	Max Load	Weight	Size Screw "H" (not included)	B	C	D	E	Screw Circle Dia. - F
$\frac{3}{8}$	425	0.4	#18 x $1\frac{1}{2}$	$2\frac{7}{8}$	$1\frac{3}{8}$	$\frac{7}{8}$	$\frac{3}{16}$	2
$\frac{1}{2}$	1,050	0.9	$\frac{3}{8}$ x 2	4	$1\frac{1}{2}$	$\frac{15}{16}$	$\frac{1}{4}$	$2\frac{7}{8}$
$\frac{5}{8}$	1,220	1.5	$\frac{1}{2}$ x 2	$4\frac{3}{4}$	$1\frac{5}{8}$	1	$\frac{5}{16}$	$3\frac{3}{8}$
$\frac{3}{4}$	1,270	2.2	$\frac{9}{16}$ x 2	$5\frac{1}{4}$	$1\frac{7}{8}$	$1\frac{1}{16}$	$\frac{3}{8}$	$3\frac{5}{8}$