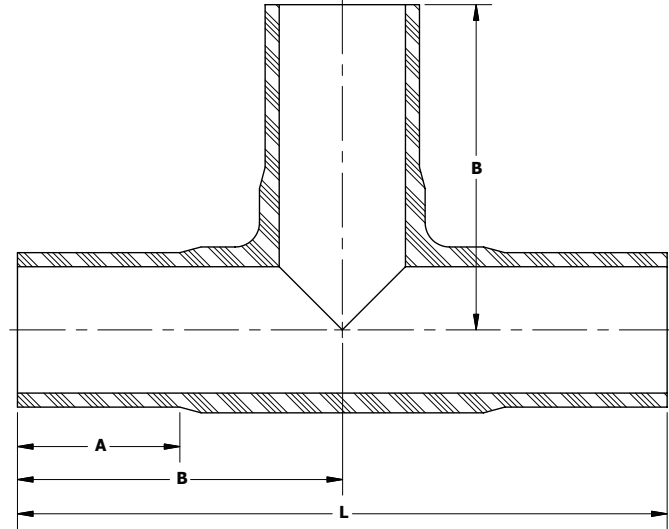


Butt Fusion Fittings



Tee

BUTT FUSION
3408/4710 HDPE



Butt Fusion Tee - 3408/4710 HDPE			
PE Size	SDR / WALL	Part Number	Package Qty
1 1/4" IPS	DR-11	4431-50-0615-AA	5
2" IPS	DR-11	4431-50-0617-00	5
3 IPS	DR-11	4431-50-0619-00	2
4" IPS	DR-11	4431-50-0621-00	1
6" IPS	DR-11	4431-50-0624-00	1

• For sizes not listed, contact Continental Industries.

Butt Fusion Tee Dimensions			
Part Number	A	B	L
4431-50-0615-00	2.500	4.000	8.000
4431-50-6017-00	2.500	4.250	8.500
4431-50-0619-00	3.000	5.750	11.375
4431-50-0621-00	3.000	6.250	12.250
4431-50-0624-00	4.000	8.250	16.250

• All values are nominal dimensions.