

Fig. 590

Adjustable Clevis for Ductile or Cast Iron Pipe

Size Range: 3" through 24" ductile or cast iron pipe

Material: Carbon steel

Finish: Plain or Galvanized

Service: Recommended for the suspension of **stationary** ductile iron or cast iron pipe.

Approvals: Complies with Federal Specification A-A-1192A (Type 1) WW-H-171-E (Type 1), ANSI/MSS SP-69 and MSS SP-58 (Type 1).

Installation: Hanger rod nut above clevis must be tightened securely to assure proper hanger performance.

Adjustment: Vertical adjustment without removing pipe may be made from 1¹⁵/₁₆" through 3³/₁₆", varying with the size of the clevis. Tighten upper nut after adjustment.

Ordering: Specify pipe size, figure number, name and finish.

Note: Figure 590 sizes 12" and below typically feature a Figure 260 Top Component.

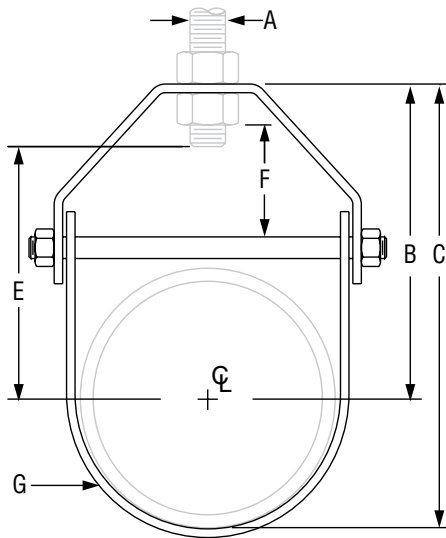


FIG. 590: LOADS (LBS) • WEIGHT (LBS) • DIMENSIONS (IN)

D.I./C.I. Pipe Size	Max Load	Weight	D.I./C.I. Pipe O.D.	Rod Size A	B	C	E	F	G Width Lower
3	1,350	1.10	3.96	1/2	5 ¹ / ₁₆	7 ¹ / ₁₆	4 ³ / ₁₆	1 ¹³ / ₁₆	1 ¹ / ₄
4	1,430	1.64	4.80	5/8	5 ³ / ₄	8 ³ / ₁₆	4 ³ / ₄	1 ¹⁵ / ₁₆	
6	1,940	4.26	6.90	3/4	7 ⁷ / ₈	10 ⁹ / ₁₆	5 ¹⁵ / ₁₆		2 ¹ / ₄
8	2,000	6.70	9.05		10 ¹⁰ / ₈	13 ³ / ₁₆	7 ¹ / ₂	2 ⁵ / ₁₆	
10	3,600	9.73	11.10	7/8	12 ¹² / ₁₆	15 ¹¹ / ₁₆	8 ³ / ₄		2 ⁷ / ₈
12	3,800	13.64	13.20		13 ¹³ / ₄	20 ⁷ / ₈	11 ⁵ / ₁₆	2 ⁹ / ₁₆	
14	4,200	16.04	15.30	1	14 ¹ / ₄	22 ¹⁵ / ₁₆	12 ⁹ / ₁₆		2 ⁷ / ₁₆
16	4,600	24.52	17.40		16 ¹⁶ / ₈	26 ⁵ / ₈	15 ³ / ₁₆	3 ¹³ / ₁₆	
18	4,800	27.45	19.50	1 ¹ / ₄	18 ¹ / ₄	29 ¹ / ₁₆	16 ³ / ₈		3
20	4,800	46.24	21.60		20 ²⁰ / ₁₆	33 ¹ / ₄	18 ³ / ₈		
24	4,800	57.10	25.80						

- Table of Contents
- General Notes
- Copper Tubing Hangers
- Stainless Steel Hangers
- CPVC Pipe Hangers
- Pipe Rings
- Clevis Hangers**
- Steel Pipe Clamps
- Socket Clamps
- Beam Clamps
- Structural Attachments
- Brackets
- Ceiling Plates & Flanges
- Concrete Inserts & Attachments
- Hanger Rods
- Rod Attachments
- Bolts, Nuts, Pins & U-Bolts