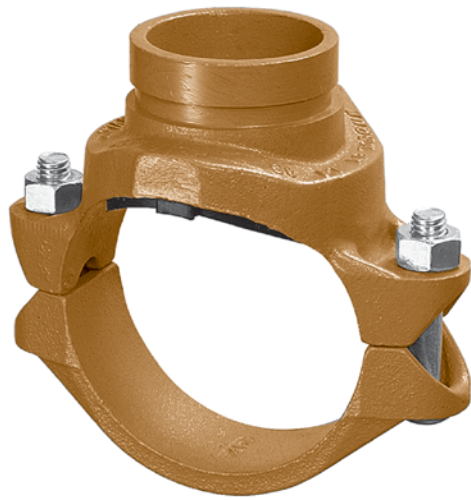


FIG. 7046

Clamp-T, Grooved Branch





 For Listings/Approval Details and Limitations, visit our website at www.anvilintl.com or contact an Anvil® Sales Representative.

The Gruvlok Clamp-T provides a quick and easy outlet at any location along the pipe. A hole drilled or cut in the pipe to receive the locating collar of the Clamp-T is all that is required. The full, smooth outlet area provides for optimum flow characteristics.

The Clamp-T housing is specially engineered to conform to the pipe O.D. and the Clamp-T gasket providing a leak-tight reliable seal in both positive pressure and vacuum conditions. The maximum working pressure for all sizes is 500 PSI (34.5 bar) when assembled on standard wall steel pipe.

The Gruvlok Clamp-T provides for a branch or cross connection in light wall or standard wall steel pipe.

Clamp-T cross connections are available in most sizes allowing greater versatility in piping design.

CLAMP-T FLOW DATA (FRICTIONAL RESISTANCE)		
Branch Size	Fig. 7046 Grooved Branch	
	C.V. Value	Equiv. Pipe Length
<i>In./DN/mm</i>		<i>Ft./Meters</i>
1 1/4 32	5.4	5.0 1.5
1 1/2 40	95	3.5 1.1
2 50	148	4.5 1.4
2 1/2 65	205	7.0 2.1
3 80	294	9.5 2.9
4 100	571	7.0 2.1

MATERIAL SPECIFICATIONS

ANSI BOLTS & HEAVY HEX NUTS:

Heat treated, oval neck track head bolts conforming to ASTM A 183 Grade 2 with a minimum tensile strength of 110,000 psi and heavy hex nuts of carbon steel conforming to ASTM A 563 Grade A or Grade B, or J995 Grade 2. Bolts and nuts are provided zinc electroplated as standard.

METRIC BOLTS & HEAVY HEX NUTS:

Heat treated, zinc electroplated oval-neck track head bolts made of carbon steel with mechanical properties per ISO 898-1 Class 8.8. Hex nuts are zinc electroplated followed by a yellow chromate dip.

U-BOLT:

Cold drawn steel and zinc plated.

HOUSING:

Ductile Iron conforming to ASTM A 536, Grade 65-45-12

COATINGS:

Rust inhibiting paint – Color: ORANGE (standard)
 Hot Dipped Zinc Galvanized (optional)
 Other Colors Available (IE: RAL3000 and RAL9000)
 For other Coating requirements contact an Anvil Representative for more information.

GASKETS: Materials

Properties as designated in accordance with ASTM D 2000

Grade “E” EPDM (Green color code)

-40°F to 230°F (Service Temperature Range)(-40°C to 110°C)

Recommended for water service, diluted acids, alkalies solutions, oil-free air and many other chemical services.

NOT FOR USE IN PETROLEUM APPLICATIONS.

Grade “T” Nitrile (Orange color code)

-20°F to 180°F (Service Temperature Range)(-29°C to 82°C)

Recommended for petroleum applications. air with oil vapors and vegetable and mineral oils.

NOT FOR USE IN HOT WATER OR HOT AIR.

LUBRICATION:

Standard Gruvlok

Gruvlok Xtreme™ (Do Not use with Grade “L”)

FIG. 7046

Clamp-T, Grooved Branch

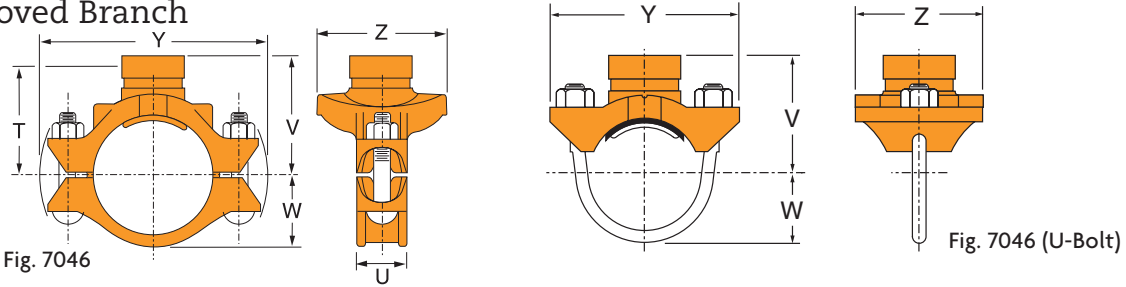


FIGURE 7046-GR BRANCH

Nominal Size	O.D.	Hole Dimensions		▼ Max. Working Pressure	Clamp-T Dimensions					Bolt Size	Specified Torque \$		Approx. Wt. Each
		Min. Diameter	Max. Diameter		U	V Grooved	W	Y	Z		Min.	Max.	
In./DN(mm)	In./mm	In./mm	In./mm	PSI/bar	In./mm	In./mm	In./mm	In./mm	In./mm	In./mm	Fl.-Lbs/N-m	Lbs./Kg	
2½ x 1¼	2.875 x 1.660	2	2½	500	¾	3⅞	1¼	6⅞	3½	½ U-Bolt	30	40	3.4
65 x 32	73.0 x 42.4	51	54	34.5	14	79	44	156	89	-	-	-	1.5
2½ x 1½	2.875 x 1.900	2	2½	500	¾	3⅞	1¼	6⅞	3½	½ U-Bolt	30	40	3.4
65 x 40	73.0 x 48.3	51	54	34.5	14	79	44	156	89	-	-	-	1.5
3 x 1¼	3.500 x 1.660	2	2½	500	1½	3½	2⅞	6⅞	3¾	½ x 2¾	80	100	3.4
80 x 32	88.9 x 42.4	51	54	34.5	38	89	54	175	95	-	-	-	1.5
3 x 1½	3.500 x 1.900	2	2½	500	1½	3½	2⅞	6⅞	3¾	½ x 2¾	80	100	4.4
80 x 40	88.9 x 48.3	51	54	34.5	38	89	54	175	95	-	-	-	2.0
3 x 2	3.500 x 2.375	2½	2⅝	500	1½	3½	2⅞	6⅞	4⅞	½ x 2¾	80	100	4.6
80 x 50	88.9 x 60.3	64	67	34.5	38	89	54	175	105	-	-	-	2.1
4 x 1¼	4.500 x 1.660	2	2½	500	1⅞	4	2⅝	7½	3¾	½ x 2¾	80	100	4.2
100 x 32	114.3 x 42.4	51	54	34.5	48	102	67	191	95	-	-	-	1.9
4 x 1½	4.500 x 1.900	2	2½	500	1⅞	4	2⅝	7½	3¾	½ x 2¾	80	100	4.3
100 x 40	114.3 x 48.3	51	54	34.5	48	102	67	191	95	-	-	-	2.0
4 x 2	4.500 x 2.375	2½	2⅝	500	1⅞	4	2⅝	7½	4⅞	½ x 2¾	80	100	4.6
100 x 50	114.3 x 60.3	64	67	34.5	48	102	67	191	105	-	-	-	2.1
4 x 2½	4.500 x 2.875	2¾	2⅞	500	1⅞	4	2⅝	7½	4⅞	½ x 2¾	80	100	5.0
100 x 65	114.3 x 73.0	70	73	34.5	48	102	67	191	111	-	-	-	2.3
4 x 3 O.D.	4.500 x 2.996	2¾	2⅞	500	1⅞	4	2⅝	7½	4⅞	½ x 2¾	80	100	5.0
100 x 80	114.3 x 76.1	70	73	34.5	48	102	67	191	111	-	-	-	2.3
4 x 3	4.500 x 3.500	3½	3⅝	500	1⅞	4	2⅝	7½	5¼	½ x 3½	80	100	5.6
100 x 80	114.3 x 88.9	89	92	34.5	48	102	67	191	133	-	-	-	2.5
5 x 1¼	5.563 x 1.660	2	2½	500	1⅞	4¼	3¼	9⅞	3¾	½ x 2¾	80	100	5.6
125 x 32	141.3 x 42.4	51	54	34.5	48	108	83	232	95	-	-	-	2.5
5 x 1½	5.563 x 1.900	2	2½	500	1⅞	4¼	3¼	9⅞	3¾	⅝ x 3¼	100	130	5.6
125 x 40	141.3 x 48.3	51	54	34.5	48	108	83	232	95	-	-	-	2.5
5 x 2	5.563 x 2.375	2½	2⅝	500	1⅞	4¼	3¼	9⅞	4⅞	⅝ x 3¼	100	130	5.5
125 x 50	141.3 x 60.3	64	67	34.5	48	108	83	232	105	-	-	-	2.5
5 x 2½	5.563 x 2.875	2¾	2⅞	500	1⅞	4¼	3¼	9⅞	4⅞	⅝ x 3¼	100	130	5.8
125 x 65	141.3 x 73.0	70	73	34.5	48	108	83	232	111	-	-	-	2.6
5 x 3	5.563 x 3.500	3½	3⅝	500	1⅞	4⅞	3¼	9⅞	5¼	⅝ x 3¼	100	130	7.1
125 x 80	141.3 x 88.9	89	92	34.5	48	117	83	232	133	-	-	-	3.2
6 x 1½	6.625 x 1.900	2	2½	500	2	5	3⅞	10⅞	3¾	⅝ x 4¼	100	130	7.2
150 x 40	168.3 x 48.3	51	54	34.5	51	127	98	257	95	*	-	-	3.3
6 x 2	6.625 x 2.375	2½	2⅝	500	2	5	3⅞	10⅞	4⅞	⅝ x 4¼	100	130	7.8
150 x 50	168.3 x 60.3	64	67	34.5	51	127	98	257	105	*	-	-	3.5
6 x 2½	6.625 x 2.875	2¾	2⅞	500	2	5⅞	3⅞	10⅞	4⅞	⅝ x 4¼	100	130	7.6
150 x 65	168.3 x 73.0	70	73	34.5	51	130	98	257	111	*	-	-	3.4
6 x 3 O.D.	6.625 x 2.996	2¾	2⅞	500	2	5⅞	3⅞	10⅞	4⅞	⅝ x 4¼	100	130	7.6
150 x 80	168.3 x 76.1	70	73	34.5	51	130	98	257	111	*	-	-	3.4
6 x 3	6.625 x 3.500	3½	3⅝	500	2	5⅞	3⅞	10⅞	5¼	⅝ x 4¼	100	130	8.0
150 x 80	168.3 x 88.9	89	92	34.5	51	130	98	257	133	*	-	-	3.6
6 x 4	6.625 x 4.500	4½	4⅞	500	2	5¼	3⅞	10⅞	6½	⅝ x 4¼	100	130	10.4
150 x 100	168.3 x 114.3	114	117	34.5	51	133	98	257	165	*	-	-	4.7
8 x 2	8.625 x 2.375	2½	2⅝	500	2¼	6⅞	5	12¾	4¼	¾ x 4½	130	180	10.4
200 x 50	219.1 x 60.3	64	67	34.5	57	156	127	324	108	-	-	-	4.7
8 x 2½	8.625 x 2.875	2¾	2⅞	500	2¼	6⅞	5	12¾	4⅞	¾ x 4½	130	180	10.6
200 x 65	219.1 x 73.0	70	73	34.5	57	156	127	324	111	M20 x 110	175	245	4.8
8 x 3	8.625 x 3.500	3½	3⅝	500	2¼	6⅞	5	12¾	5¼	¾ x 4½	130	180	11.5
200 x 80	219.1 x 88.9	89	92	34.5	57	156	127	324	133	M20 x 110	175	245	5.2
8 x 4	8.625 x 4.500	4½	4⅞	500	2¼	6⅞	5	12¾	6½	¾ x 4½	130	180	16.2
200 x 100	219.1 x 114.3	114	117	34.5	57	159	127	324	165	M20 x 110	175	245	7.3

NOTES:
 2¼", 5" and 6" Nom. Run pipe size Clamp-T may be used on 3" O.D., 5½" O.D. and 6½" O.D. pipe.
 • Cannot be used in cross configuration.

▼ Based on use with standard wall pipe.
 \$ - For additional Bolt Torque information, see page 204.
 See Installation & Assembly directions on page 180.
 Not for use with copper systems.