



FITTINGS W/ DRESSER® EFV'S

CON-STAB ID SEAL® ELIMINATORS with Dresser® Low Capacity Excess Flow Valves

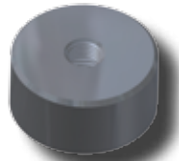
DRESSER® LOW CAPACITY EXCESS FLOW VALVES					
EFV SIZE	OUTLET (PE SIZE)	WALL	MAIN SIZE	PART NUMBER 5864 1/2" CR PUNCH	PART NUMBER 5764 13/16" CR PUNCH
DRESSER® LOW CAPACITY	1/2" CTS (5/8" OD)	.090	1 1/4"	5864-15-1604-76	N/A
			2"	5864-17-1604-76	5764-17-1604-76
			3"	5864-19-1604-76	5764-19-1604-76
			4"	5864-21-1604-76	5764-21-1604-76
			6"	5864-24-1604-76	5764-24-1604-76
			8"	N/A	5764-26-1604-76
	3/4" CTS (7/8" OD)	.090	1 1/4"	5864-15-1606-76	N/A
			2"	5864-17-1606-76	5764-17-1606-76
			3"	5864-19-1606-76	5764-19-1606-76
			4"	5864-21-1606-76	5764-21-1606-76
			6"	5864-24-1606-76	5764-24-1606-76
			8"	N/A	5764-26-1606-76
	1" CTS (1 1/8" OD)	.099/.101	1 1/4"	5864-15-1608-76	N/A
			2"	5864-17-1608-76	5764-17-1608-76
			3"	5864-19-1608-76	5764-19-1608-76
			4"	5864-21-1608-76	5764-21-1608-76
			6"	5864-24-1608-76	5764-24-1608-76
			8"	N/A	5764-26-1608-76
		.090	1 1/4"	5864-15-1608-77	N/A
			2"	5864-17-1608-77	5764-17-1608-77
			3"	5864-19-1608-77	5764-19-1608-77
			4"	5864-21-1608-77	5764-21-1608-77
			6"	5864-24-1608-77	5764-24-1608-77
			8"	N/A	5764-26-1608-77
	1/2" IPS	SDR-9.33 (.090)	1 1/4"	5864-15-1612-76	N/A
			2"	5864-17-1612-76	5764-17-1612-76
			3"	5864-19-1612-76	5764-19-1612-76
			4"	5864-21-1612-76	5764-21-1612-76
			6"	5864-24-1612-76	5764-24-1612-76
			8"	N/A	5764-26-1612-76
	3/4" IPS	SDR-11 (.095)	1 1/4"	5864-15-1613-76	N/A
			2"	5864-17-1613-76	5764-17-1613-76
			3"	5864-19-1613-76	5764-19-1613-76
			4"	5864-21-1613-76	5764-21-1613-76
			6"	5864-24-1613-76	5764-24-1613-76
			8"	N/A	5764-26-1613-76
1" IPS	SDR-11 (.119)	1 1/4"	5864-15-1614-76	N/A	
		2"	5864-17-1614-76	5764-17-1614-76	
		3"	5864-19-1614-76	5764-19-1614-76	
		4"	5864-21-1614-76	5764-21-1614-76	
		6"	5864-24-1614-76	5764-24-1614-76	
		8"	N/A	5764-26-1614-76	



- For sizes not listed, contact Continental Industries.
- Con-Stab ID Seal® Eliminators rated at 125 psig.
- Recommended accessories;
 - Continental's Bladed Chamfering Tool. See page 28 for size combinations available.
 - 33-5505-00 ~ Combination Tapping Tool & Saddle Bolt "T" Wench for 1 1/4" thru 6" IPS Eliminators
 - 33-5505-01 ~ Combination Tapping Tool & Saddle Bolt "T" Wench for 3" thru 8" IPS Eliminators
 - 33-5508-00 ~ Test Plug Cap for Eliminator Saddles
- For Protective Sleeves, see page 29.



33-5505-00 & 33-5505-01~ Combination Tapping Tool & Saddle Bolt "T" Wench



33-5508-00 ~ Test Plug Cap for Eliminator Saddles with 1/4" FPT for attachment of quick connect coupling

