

# FITTINGS W/ UMAC® EFV'S



## PA ELIMINATORS with UMAC® Series 300 Excess Flow Valves

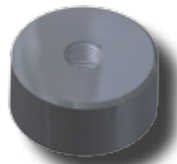
UMAC® 300 SERIES EXCESS FLOW VALVES					
EFV SIZE	OUTLET (PE SIZE)	WALL	MAIN SIZE	PART NUMBER	PART NUMBER
				5864 1/2" CR PUNCH	5764 13/16" CR PUNCH
UMAC® SERIES 300	1/2" CTS (5/8" OD)	.090	1 1/4"	5864-15-1004-70	N/A
			2"	5864-17-1004-70	5764-17-1004-70
			3"	5864-19-1004-70	5764-19-1004-70
			4"	5864-21-1004-70	5764-21-1004-70
			6"	5864-24-1004-70	5764-24-1004-70
			8"	N/A	5764-26-1004-70
		.062	1 1/4"	5864-15-1004-71	N/A
			2"	5864-17-1004-71	5764-17-1004-71
			3"	5864-19-1004-71	5764-19-1004-71
			4"	5864-21-1004-71	5764-21-1004-71
			6"	5864-24-1004-71	5764-24-1004-71
			8"	N/A	5764-26-1004-71
	1" CTS (1 1/8" OD)	.099/.101	1 1/4"	5864-15-1008-70	N/A
			2"	5864-17-1008-70	5764-17-1008-70
			3"	5864-19-1008-70	5764-19-1008-70
			4"	5864-21-1008-70	5764-21-1008-70
			6"	5864-24-1008-70	5764-24-1008-70
			8"	N/A	5764-26-1008-70
		.090	1 1/4"	5864-15-1008-71	N/A
			2"	5864-17-1008-71	5764-17-1008-71
			3"	5864-19-1008-71	5764-19-1008-71
			4"	5864-21-1008-71	5764-21-1008-71
			6"	5864-24-1008-71	5764-24-1008-71
			8"	N/A	5764-26-1008-71
	3/4" IPS	SDR-11 (.095)	1 1/4"	5864-15-1013-70	N/A
			2"	5864-17-1013-70	5764-17-1013-70
			3"	5864-19-1013-70	5764-19-1013-70
			4"	5864-21-1013-70	5764-21-1013-70
			6"	5864-24-1013-70	5764-24-1013-70
			8"	N/A	5764-26-1013-70
	1" IPS	SDR-11 (.119)	1 1/4"	5864-15-1014-70	N/A
			2"	5864-17-1014-70	5764-17-1014-70
3"			5864-19-1014-70	5764-19-1014-70	
4"			5864-21-1014-70	5764-21-1014-70	
6"			5864-24-1014-70	5764-24-1014-70	
8"			N/A	5764-26-1014-70	



- For sizes not listed, contact Continental Industries.
- Con-Stab ID Seal® Eliminators rated at 125 psig.
- Recommended accessories;
  - 33-5505-00 ~ Combination Tapping Tool & Saddle Bolt "T" Wench for 1 1/4" thru 6" IPS Eliminators
  - 33-5505-01 ~ Combination Tapping Tool & Saddle Bolt "T" Wench for 3" thru 8" IPS Eliminators
  - 33-5508-00 ~ Test Plug Cap for Eliminator Saddles
- For Protective Sleeves, see page 29.



33-5505-00 & 33-5505-01 ~ Combination Tapping Tool & Saddle Bolt "T" Wench



33-5508-00 ~ Test Plug Cap for Eliminator Saddles with 1/4" FPT for attachment of quick connect coupling

