

# FITTINGS W/ DRESSER® EFV'S



## PA ELIMINATORS with Dresser® High Capacity Excess Flow Valves

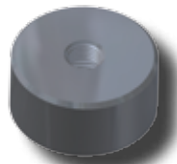
| DRESSER® HIGH CAPACITY EXCESS FLOW VALVES |                    |               |           |                       |                         |
|---|--------------------|---------------|-----------|-----------------------|-------------------------|
| EFV SIZE                                  | OUTLET (PE SIZE)   | WALL          | MAIN SIZE | PART NUMBER           | PART NUMBER             |
|   |                    |               |           | 5864<br>1/2" CR PUNCH | 5764<br>13/16" CR PUNCH |
| DRESSER®<br>HIGH<br>CAPACITY              | 1" CTS (1 1/8" OD) | .099/.101     | 1 1/4"    | 5864-15-1008-80       | N/A                     |
|   |                    |               | 2"        | 5864-17-1008-80       | 5764-17-1008-80         |
|   |                    |               | 3"        | 5864-19-1008-80       | 5764-19-1008-80         |
|   |                    |               | 4"        | 5864-21-1008-80       | 5764-21-1008-80         |
|   |                    |               | 6"        | 5864-24-1008-80       | 5764-24-1008-80         |
|   |                    |               | 8"        | N/A                   | 5764-26-1008-80         |
|   |                    | .090          | 1 1/4"    | 5864-15-1008-81       | N/A                     |
|   |                    |               | 2"        | 5864-17-1008-81       | 5764-17-1008-81         |
|   |                    |               | 3"        | 5864-19-1008-81       | 5764-19-1008-81         |
|   |                    |               | 4"        | 5864-21-1008-81       | 5764-21-1008-81         |
|   |                    |               | 6"        | 5864-24-1008-81       | 5764-24-1008-81         |
|   |                    |               | 8"        | N/A                   | 5764-26-1008-81         |
|   | 3/4" IPS           | SDR-11 (.095) | 1 1/4"    | 5864-15-1013-80       | N/A                     |
|   |                    |               | 2"        | 5864-17-1013-80       | 5764-17-1013-80         |
|   |                    |               | 3"        | 5864-19-1013-80       | 5764-19-1013-80         |
|   |                    |               | 4"        | 5864-21-1013-80       | 5764-21-1013-80         |
|   |                    |               | 6"        | 5864-24-1013-80       | 5764-24-1013-80         |
|   |                    |               | 8"        | N/A                   | 5764-26-1013-80         |
|   | 1" IPS             | SDR-11 (.119) | 1 1/4"    | 5864-15-1014-80       | N/A                     |
|   |                    |               | 2"        | 5864-17-1014-80       | 5764-17-1014-80         |
|   |                    |               | 3"        | 5864-19-1014-80       | 5764-19-1014-80         |
|   |                    |               | 4"        | 5864-21-1014-80       | 5764-21-1014-80         |
|   |                    |               | 6"        | 5864-24-1014-80       | 5764-24-1014-80         |
|   |                    |               | 8"        | N/A                   | 5764-26-1014-80         |



- For sizes not listed, contact Continental Industries.
- Con-Stab ID Seal® Eliminators rated at 125 psig.
- Recommended accessories;
  - 33-5505-00 ~ Combination Tapping Tool & Saddle Bolt "T" Wench for 1 1/4" thru 6" IPS Eliminators
  - 33-5505-01 ~ Combination Tapping Tool & Saddle Bolt "T" Wench for 3" thru 8" IPS Eliminators
  - 33-5508-00 ~ Test Plug Cap for Eliminator Saddles
- For Protective Sleeves, see page 29.



33-5505-00 & 33-5505-01 ~ Combination Tapping Tool & Saddle Bolt "T" Wench



33-5508-00 ~ Test Plug Cap for Eliminator Saddles with 1/4" FPT for attachment of quick connect coupling

