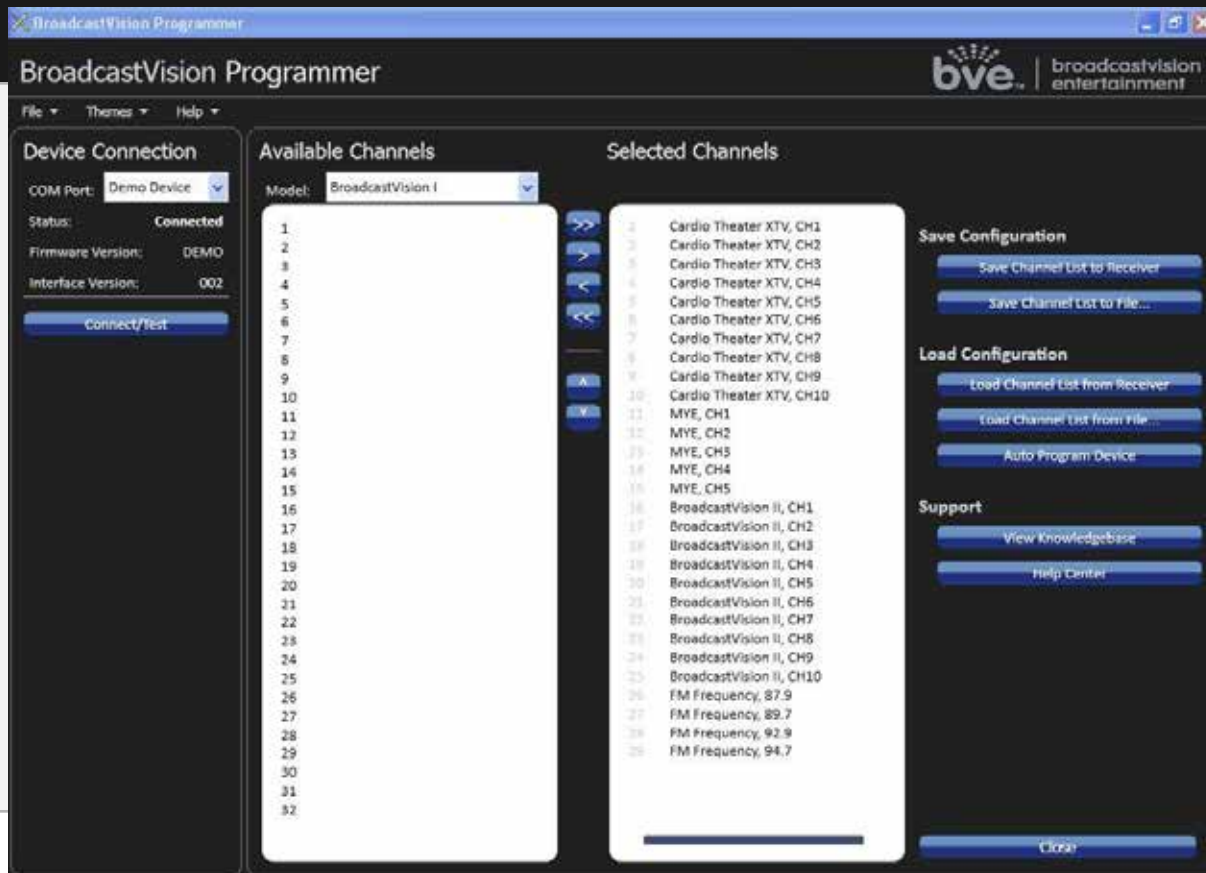


## APEX SOFTWARE FOR PROGRAMMING AXCESS SERIES WIRELESS RECEIVERS

The new APEX software from Broadcastvision allows you to easily pre-program our 900MHz wireless receivers saving you precious time during your installation. Simply install the software on your laptop, plug the receiver into the USB port and select the frequencies you wish to download to the receiver. Once the frequencies are selected, it's as easy as clicking the "save channel list to receiver" and you're finished. To program additional receivers, simply plug in the receiver and click the "save channel list to receiver"



## STEPS TO PROGRAM RECEIVER

1. Download this Apex Preset Programming software.
2. Connect provided cable from receiver to computer USB port.
3. Choose Desired Channel Presets (any manufacturer type of 900MHz/863MHz and FM from drop down menu).
4. Click 'Save Channel List to Receiver' button.
5. Plug in next receiver and click 'Save Channel List to Receiver',
6. Repeat until all receivers are programmed with presets,

Part Number: APEXPSWCBL