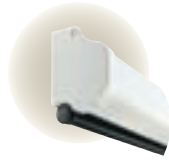


Luma

Spring-roller projection screen for the classroom.

The Luma projection screen is dependable in the classroom or conference room. Its case and endcaps have a scratch-resistant, white polyester finish. The case is designed to be attractive, sturdy and friction-free.



Luma 2

Heavy-duty spring roller projection screen.

The Luma 2 is an attractive and practical choice wherever a large spring-roller screen is required. Simple in design and rugged in construction, the Luma 2 is housed in a white steel case with matching endcaps.



System Options for Luma and Luma 2

- **Viewing surfaces**—Matt White, Glass Beaded or High Contrast Grey.
- **Extra Drop**—Maximum total screen height of 8' for Luma, 12' for Luma 2. Surface color or black; surface color is standard on AV format screens, black on all others.
- **Black Masking Borders**—Available on AV format screens: 1½" wide in sizes through 70" x 70"; 2" wide in larger sizes. All other formats have black borders to frame image on all four sides.
- **Available with AutoReturn™**—See below for details.
- **Projected Mounting Brackets**—See below for details.
- **Ceiling Opening Trim Kit**—For ceiling-recessed installations of the Luma 2. Refer to page 15. Draper recommends adding 12" of extra drop to any Luma 2 in NTSC or HDTV format with a Ceiling Opening Trim Kit.

Dimensions, drawings and specifications available at:
www.draperinc.com/go/Luma.htm

Projected Mounting Brackets

Sturdy, white (standard) or black (standard for Premier and Silhouette) angle brackets for wall-mounting screens to clear obstacles like chalkboards and maps. Ships in matching pairs. Available in the following sizes:

- **18"-24" Adjustable Bracket**—Extends screen 18¼", 20", or 24" from wall. For Luma 2 through 8' wide and all Luma sizes.
- **10" or 14" Wall Brackets**—Extends screen 10" or 14" from wall. For Luma 2 through 8' wide and all Luma sizes.
- **6" Wall Bracket**—Extends screen 6" from wall. For all Silhouette, Luma, and Luma 2 sizes, and all Premier and Targa sizes except in large style cases.



DePauw University, Greencastle, IN. Photographer: Wayne Williams, Indianapolis, IN

Dimensions & Data—Luma & Luma 2

		Luma		Luma 2		Luma 2	
Size H x W	Case Length	Net Wt. (lbs.)	Case Length	Net Wt. (lbs.)	Size H x W	Case Length	Net Wt. (lbs.)
AV Format							
50" x 50"	52 ³ / ₈ "	9	52 ¹ / ₂ "	23	7' x 9'	111 ¹ / ₄ "	37
60" x 60"	62 ³ / ₈ "	11	62 ¹ / ₂ "	26	9' x 9'	111 ¹ / ₄ "	42
70" x 70"	72 ³ / ₈ "	15	72 ¹ / ₂ "	29	8' x 10'	123 ¹ / ₄ "	41
84" x 84"	86 ³ / ₈ "	20	86 ¹ / ₂ "	32	10' x 10'	123 ¹ / ₄ "	47
72" x 96"	98 ⁷ / ₈ "	22	98 ⁵ / ₈ "	32	9' x 12'	147 ¹ / ₄ "	55
96" x 96"	98 ⁷ / ₈ "	23	98 ⁵ / ₈ "	34	12' x 12'	147 ¹ / ₄ "	66
Nominal Diagonal	Image Area H x W	Overall Size	Case Length	Net Wt. (lbs.)	Luma 2		
NTSC Format (4:3)							
6'	42 ¹ / ₂ " x 56 ¹ / ₂ "	46 ¹ / ₂ " x 59 ¹ / ₂ "	62 ³ / ₈ "	11	—	—	—
7'	50" x 66 ¹ / ₂ "	53 ¹ / ₂ " x 69 ¹ / ₂ "	72 ³ / ₈ "	14	—	—	—
100"	60" x 80"	64" x 83 ¹ / ₂ "	86 ³ / ₈ "	17	86 ¹ / ₂ "	32	32
10'	69" x 92"	73" x 96"	98 ⁷ / ₈ "	21	98 ⁵ / ₈ "	32	32
11'	78" x 104"	83" x 108"	—	—	111 ¹ / ₄ "	36	36
150"	87" x 116"	92" x 120"	—	—	123 ¹ / ₄ "	41	41
15'	105" x 140"	109" x 144"	—	—	147 ¹ / ₄ "	55	55
HDTV Format (16:9)							
65"*	31 ³ / ₄ " x 56 ¹ / ₂ "	43 ³ / ₄ " x 59 ¹ / ₂ "	62 ³ / ₈ "	11	—	—	—
73"*	36" x 64"	48" x 69 ¹ / ₂ "	72 ³ / ₈ "	14	—	—	—
82"*	40 ¹ / ₂ " x 72"	52 ¹ / ₂ " x 74"	76 ⁷ / ₈ "	17	—	—	—
92"*	45" x 80"	57" x 83 ¹ / ₂ "	86 ³ / ₈ "	18	86 ¹ / ₂ "	32	32
106"*	52" x 92"	64" x 96"	98 ⁷ / ₈ "	21	98 ⁵ / ₈ "	32	32
119"	58" x 104"	62" x 108"	—	—	111 ¹ / ₄ "	35	35
133"	65" x 116"	69" x 120"	—	—	123 ¹ / ₄ "	39	39
161"	79" x 140"	84" x 144"	—	—	147 ¹ / ₄ "	54	54
16:10 Format							
67"*	35 ¹ / ₄ " x 56 ¹ / ₂ "	47 ¹ / ₄ " x 59 ¹ / ₂ "	62 ³ / ₈ "	—	—	—	—
76"*	40" x 64"	52" x 69 ¹ / ₂ "	72 ³ / ₈ "	—	—	—	—
85"*	45" x 72"	58" x 74"	76 ⁷ / ₈ "	—	—	—	—
94"*	50" x 80"	62" x 83 ¹ / ₂ "	86 ³ / ₈ "	—	—	38	38
109"*	57 ¹ / ₂ " x 92"	69 ¹ / ₂ " x 96"	98 ⁷ / ₈ "	—	—	46	46
123"	65" x 104"	69" x 108"	—	—	—	50	50
137"	72 ¹ / ₂ " x 116"	76 ¹ / ₂ " x 120"	—	—	—	59	59
165"	87 ¹ / ₂ " x 140"	92 ¹ / ₂ " x 144"	—	—	—	80	80

*These sizes include 12" black drop as standard.



AutoReturn™ Roller for Manual Projection Screens—
In a Draper manual projection screen with AutoReturn™, the roller mechanism gently raises the screen surface back into the case with a simple tug on the handle or pull cord.