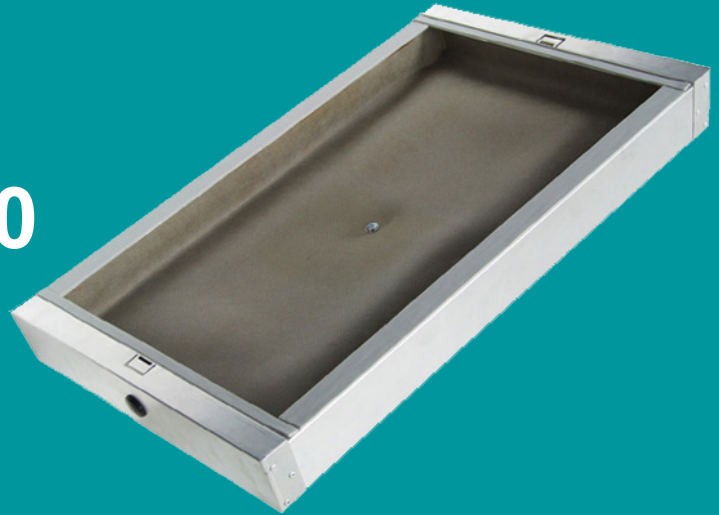


BackboxCV300



Datasheet Cavity Wall Backbox

Application:

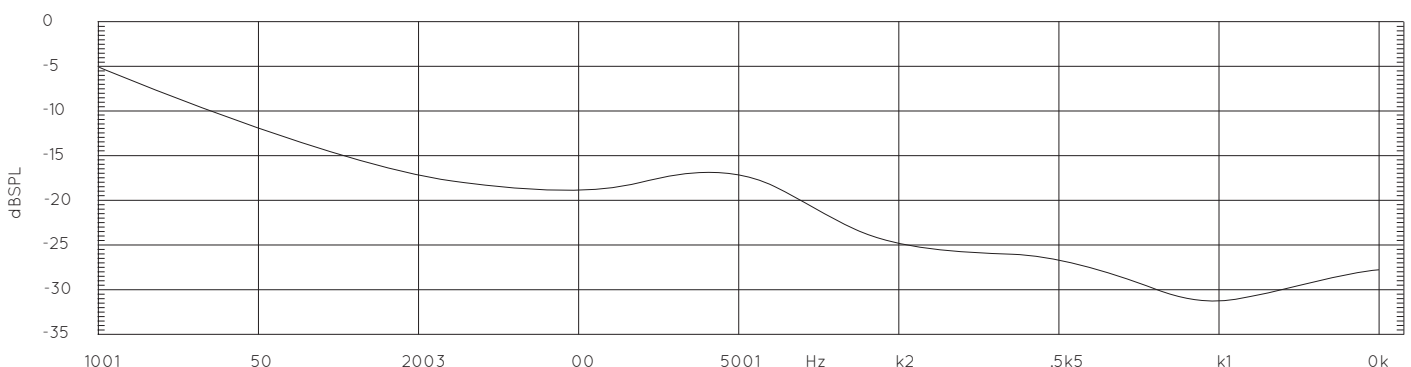
The BackboxCV300 is an easy to install, sound proofing backbox for the Amia iQ Developer Series and the LFieT series. For use in plasterboard cavity walls (drywalls) and ceilings, the BackboxCV300 creates a sealed enclosure around the back of the speaker utilising a specially designed composite sound proofing layer. The BackboxCV300 is recommended for multispeaker installations the cavity loading the backbox provides will ensure consistent sound quality from all speaker locations.

Installation:

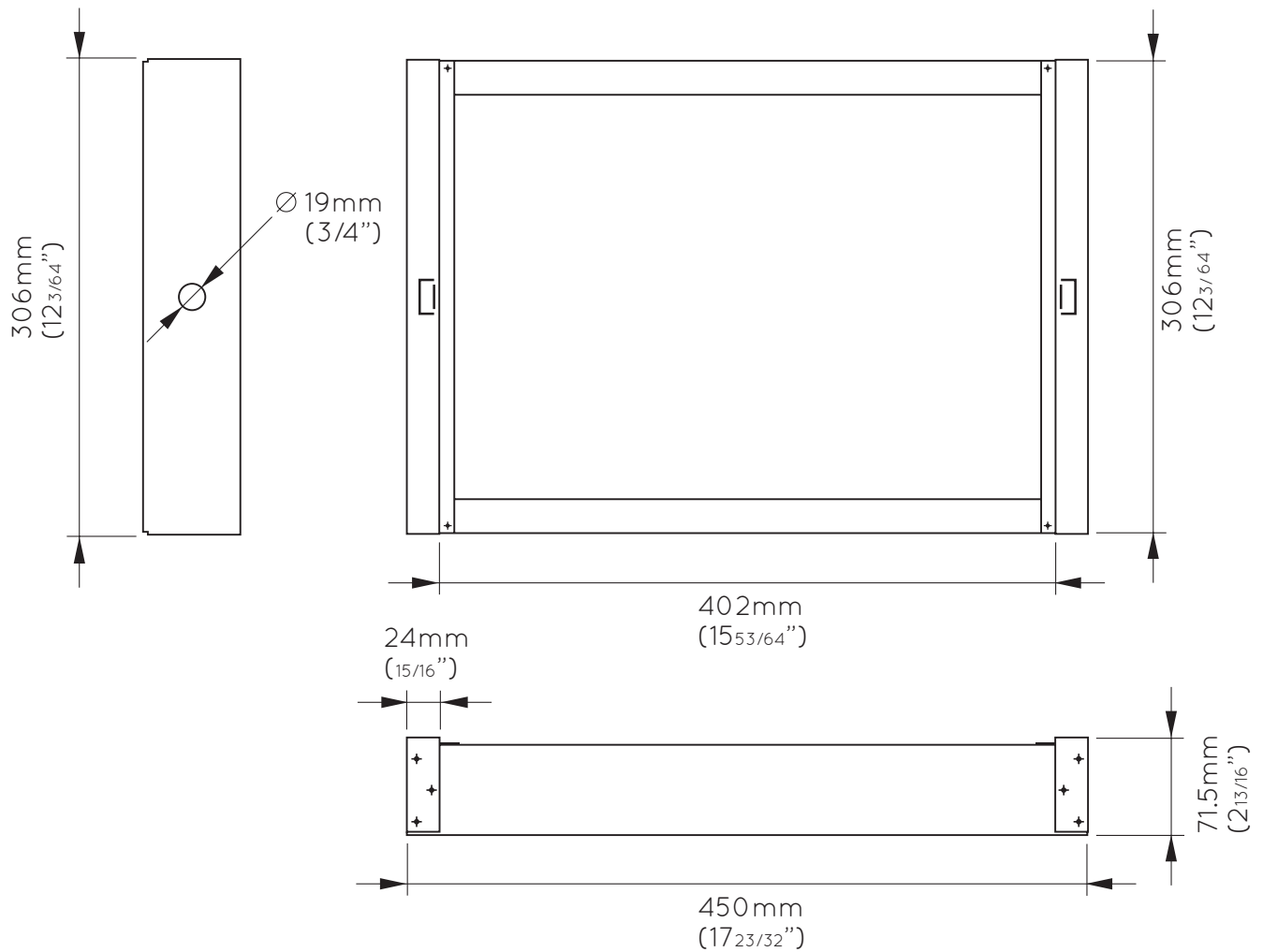
The BackboxCV300 is designed to be retrofitted to the plasterboard wall or ceiling. Importantly it is fixed to the plasterboard only which reduces potential energy transfer to the wall/ceiling joists. Our detailed installation guide provides information on how to achieve the correct speaker face alignment for different types of plaster finishes and plasterboard thicknesses. Optional alignment shims are also available.

Sound Proofing Characteristic:

The graph below shows the sound pressure level attenuation of an Amia iQ Series speaker's rearward output when installed in a BackboxCV300. Over the 150Hz - 5KHz range the rear firing sound pressure is reduced on average by 21dB. It is recommended that additional sound proofing steps are taken if your speakers are installed in a wall or ceiling where bedrooms or other occupied rooms are directly adjacent. The BackboxCV300 cannot stop some mechanically induced noise transmission inherent in certain building structures. Please consult Amina for advice.



Dimensions



Specifications

BackboxCV300

Dimensions	450mm x 306mm x 71.5mm (17 ^{23/32} " x 12 ^{3/64} " x 2 ^{13/16} "
Product weight	1.7Kg (2 ^{55/64} lbs)
Speaker cable entry	Rubber grommet (can be replaced by M20 gland)
Speaker fixing	Use 4x self tapping flangehead screws (supplied)
Wall fixing	Use 8x self tapping drywall screws (supplied)
Minimum cavity depth	75mm (3")
Sound pressure reduction	-21dB on average over 150Hz - 5kHz range

International

Amina Technologies Ltd
 Cirrus House, Glebe Road, Huntingdon
 Cambridgeshire, PE29 7DL, UK
 T: +44 (0)1480 354390
 E: inspired@amina.co.uk
 W: www.aminaco.uk

V 1.21 May 2014 © Amina Technologies Ltd



Backbox
CV

US

Amina Technologies Ltd
 P: 1-866 462 6462
 F: 1-888-329 2491
 E: sales@aminatechnologies.com
 W: www.aminaco.uk