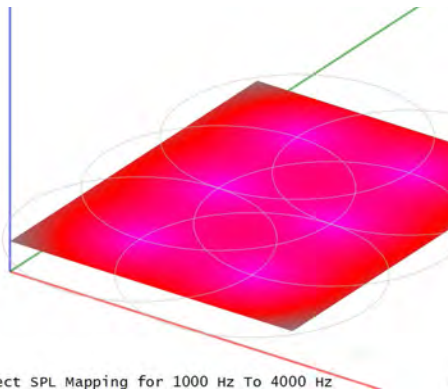
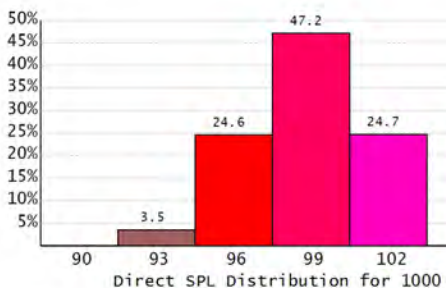


FORECASTER HD

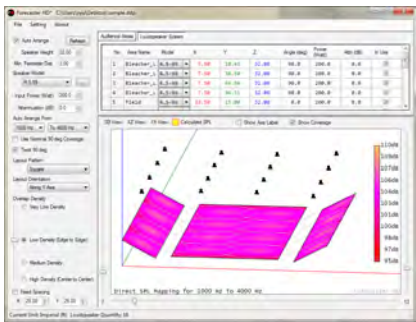
Easy-to-Use Ceiling Distributed System Calculator



Direct SPL Mapping for 1000 Hz To 4000 Hz



- ### FEATURES
- Recommends the proper model and quantity of Community ceiling speakers based on user input
 - Provides general design suggestions for ceiling systems
 - Free utility program, available for download from www.communitypro.com



Community's *FORECASTER HD* Ceiling Distributed System Software is an easy-to-use engineering tool which provides general design suggestions for distributed systems. This free utility program helps select the proper model and quantity of Community loudspeakers for various distributed applications based on user input of room dimensions and listening height. Sloped listening areas and ceilings can also be modeled using the software, while projects and mappings can be saved, recalled and shared.

The user can quickly compare the loudspeaker type, density and layout pattern among different designs to achieve the required performance and goals of the sound system. *FORECASTER HD* also allows high resolution screen shots of loudspeaker layouts, direct SPL mapping and layout dimensional information to be easily exported for client presentations or for the installation team's reference. This calculator includes advanced tools to provide a high degree of engineering precision.

The *FORECASTER HD* program, with English and Chinese language options, can be obtained by downloading from www.communitypro.com or by contacting Community for a free CD-ROM. For additional technical assistance and more sophisticated sound system predictions, contact Community's Technical Applications Group (TAG) at tagteam@communitypro.com.