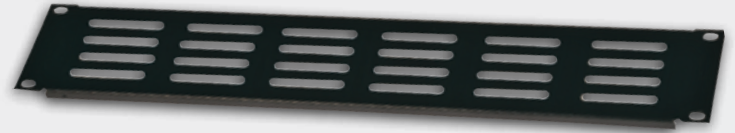


## RACK PANELS

- Standard panels offered both in aluminum and cold rolled 16 gauge black powder coated steel
- Flat and flanged models available
- Vented panels have elongated vent holes and perforated panels have 5/32" vent holes
- Security panels have 5/32" holes, non PVC rubber edging to prevent scratching of gear and a 1" raised space between panel and gear
- Fan panels have elongated, contoured vent holes, available with or without UL approved 110VAC 4.5" fan(s)
- Knockout panel has 16 knockouts for customizing

Model	Panel Type	Construction	Unit	Style
GE-PNLVNT-1U	Vented	Steel	1	Flanged
GE-PNLVNT-2U	Vented	Steel	2	Flanged
GE-PNLVNT-4U	Vented	Steel	4	Flanged
GE-PNLVNTSTD-1U	Perforated	Steel	1	Flanged
GE-PNLVNTSTD-2U	Perforated	Steel	2	Flanged
GE-PNLVNTSTD-4U	Perforated	Steel	4	Flanged
GE-PNLSECFIX-1U	Security	Steel	1	Raised
GE-PNLSECFIX-2U	Security	Steel	2	Raised
GE-PNLSECFIX-3U	Security	Steel	3	Raised
GE-PNLSECFIX-4U	Security	Steel	4	Raised
GE-PNL-ST-FLG-1	Standard	Steel	1	Flanged
GE-PNL-ST-FLG-2	Standard	Steel	2	Flanged
GP-PNL-ST-FLG-3	Standard	Steel	3	Flanged
GE-PNL-ST-FLG-4	Standard	Steel	4	Flanged
GE-PNL-ST-FLT-1	Standard	Steel	1	Flat
GE-PNL-ST-FLT-2	Standard	Steel	2	Flat
GE-PNL-ST-FLT-3	Standard	Steel	3	Flat
GE-PNL-ST-FLT-4	Standard	Steel	4	Flat
GE-PNL-UNIV16BL	Knockout	Steel	1	Flat
Model	Panel Type	Construction	Fans Space	Fan
GE-FANPNL1-110V	Fan	Steel	1	Included
GE-FANPNL2-110V	Fan	Steel	2	Included
GE-FANPNL3-110V	Fan	Steel	3	Included



GE-PNLVNT-2U



GE-PNLSECFIX-3U



GE-PNL-ST-FLG-2U



GE-FANPNL3-110V

Knockout panel has 16 knockouts for customizing



## ACCESSORIES

### Rack Rails



Model	Description
GE-LRAIL-23	For 23" Deep Cabinets
GE-LRAIL-35	For 35" Deep Cabinets
GR-FS4-RR-18-T	Rear Rail Kit for 18U FS4
GR-FS4-RR-22-T	Rear Rail kit for 22U FS4
GR-FS4-RR-27-T	Rear Rail Kit for 27U FS4
GR-FS4-RR-42-T	Rear Rail Kit for 42U FS4

### Rack Screws and Locks



#### Model

GE-SDR-LOCK

\* Lock comes with key

Model	Qty
GE-SCRW-P-100	100
GE-SCRW-P-25	25

### Fan Kit



Model	Fans	Fits FS4 Racks
GR-FS4B2FN23110	2	23" Deep

### Caster, and Baying Kits



Model	Description
GE-FS-KITCST2.5	2.5" Caster Kit
GE-FS-KIT-BAY	Baying Kit