

**PIPE CHAIR**

**Figure 145**

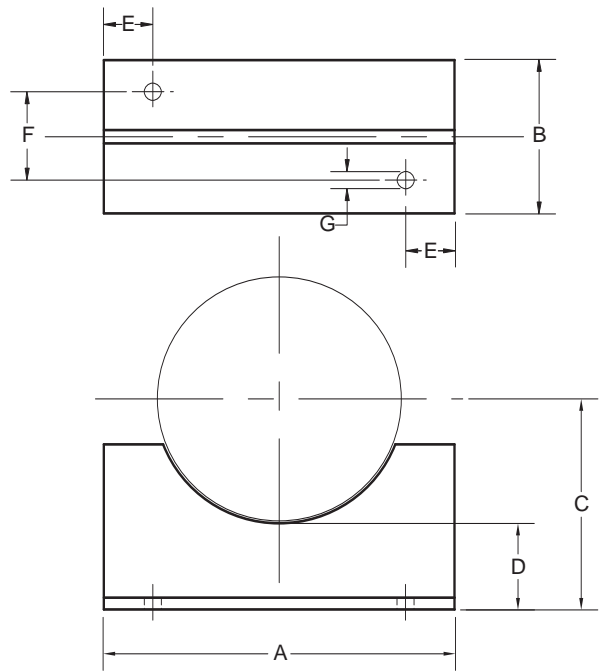
Pipe Chairs are used to support piping in underground trenches or on top of piers above or below ground. This chair allows from 2½" inches to 4" inches clearance under pipeline.

Made special to customer order.

**Material:** Steel.

**Finish:** Plain, Painted, Electro-Galvanized, Hot-Dip Galvanized.

**Ordering:** Specify pipe size, figure number, and finish. For Metric applications specify Figure M145.



**FIGURE 145 – PIPE CHAIR**

PIPE SIZE	A	B	C	D	E	F	HOLE G	WEIGHT EACH
3	4¼	3⅜	4⅝	2⅙	¾	2½	⅞	2.75
80	108	79	110	65	19	54	11	1.25
4	6¼	3⅝	5⅜	3⅝	1⅕	2⅝	⅞	5.25
100	159	90	137	79	24	59	14	2.38
5	7½	4⅞	6⅞	3¾	1	2⅞	⅞	7.90
125	191	103	154	83	25	68	14	3.58
6	8⅓	4½	6⅞	3¾	1	3⅞	⅞	10.0
150	224	114	167	83	25	81	14	4.54
8	10¾	5½	7⅓	3⅝	1⅙	4	1⅞	16.3
200	273	140	202	92	33	102	17	7.37
10	13	6½	9⅞	3⅞	1¼	5	⅞	25.8
250	330	165	230	94	32	127	16	11.7
12	15	7⅞	10½	4⅞	1½	5⅞	1⅞	33.3
300	381	192	267	105	38	141	17	15.1

DIMENSIONS		TEMPERATURE	LOADS	WEIGHT
INCHES	FAHRENHEIT	POUNDS	POUNDS	
MILLIMETERS	CELSIUS	NEWTONS	KILOGRAMS	