

MACHINE THREAD EYE ROD

Figure 33 (Right Hand Threads)

Figure 33L (Left Hand Threads)

The Figure 33 is designed to permit swing in the attachment component due to pipe movement. The inside diameter of the eye is $\frac{3}{8}$ " larger than the rod diameter for rod sizes up to 1½" while the inside diameter for larger size rods will be $\frac{3}{4}$ " greater. The eye is not welded. The Figure 93 Welded Eye Rod is available for higher load requirements.

Material: Carbon Steel.

Finish: Plain, Painted, Electro-Galvanized, Hot-Dip Galvanized.

Temperature: 650° F / 343° C Maximum.

Ordering: Specify rod size, rod length, thread length, (if other than standard), figure number, and finish. For Metric applications specify M33 or M33L. Larger rod diameters are available upon request.

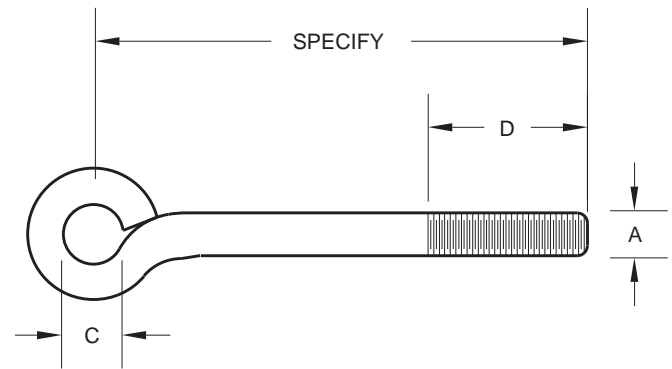


FIGURE 33 – MACHINE THREADED EYE ROD

A	$\frac{3}{8}$	$\frac{1}{2}$	$\frac{5}{8}$	$\frac{3}{4}$	$\frac{7}{8}$	1	1¼	1½	1¾	2	2¼	2½
	M10	M12	M16	M20	M22	M24	M30	M36	M42	M48	M56	M64
C	$\frac{3}{4}$	$\frac{7}{8}$	1	1¼	1½	1¾	1¾	1¾	2½	2¾	3	3¼
	19	22	25	29	32	35	41	48	64	70	76	83
D	2½	2½	2½	3	3½	4	5	6	6	6	6	6
	64	64	64	76	89	102	127	152	152	152	152	152
LOAD AT	240	440	705	1050	1470	1940	3170	4650	6380	8280	10900	13400
650° F / 343° C	1068	1957	3136	4671	6539	8630	14101	20684	28380	36831	48485	59606

HANGER ADJUSTER

Figure 38

Figure 38CT (Copper Finish)

The Figure 38 is an economical alternative to using turnbuckles for vertical piping adjustment with our Figure 34 Hinge Hanger. Figure 38CT is available in 3/8" and 1/2" rod sizes only.

Material: Malleable Iron.

Compliance: Federal Specification A-A-1192A Type 15, MSS-SP-69 Type 15.

Finish: Plain, Copper.

Ordering: Specify rod size and figure number. For Metric applications specify Figure M38 or Figure M38CT.

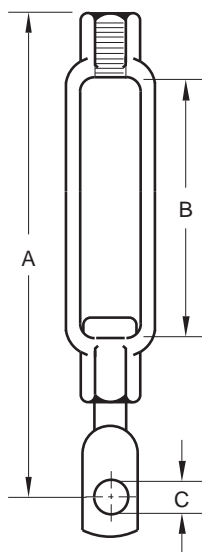


FIGURE 38 – HANGER ADJUSTER

ROD SIZE	MAX LOAD	A	B	C	WEIGHT EACH
$\frac{3}{8}$	230	2½	1¼	$\frac{7}{8}$	0.09
M6	1023	64	32	6	0.04
$\frac{1}{2}$	610	3 $\frac{13}{16}$	1¾	1 $\frac{13}{32}$	0.28
M10	2714	97	48	10	0.13
$\frac{1}{2}$	710	3 $\frac{13}{16}$	1 $\frac{13}{16}$	1 $\frac{13}{32}$	0.31
M12	3158	97	46	10	0.14
$\frac{3}{8}$	710	4¾	2 $\frac{7}{16}$	$\frac{1}{2}$	0.72
M16	3158	124	59	13	0.33
$\frac{3}{4}$	860	4 $\frac{13}{16}$	2 $\frac{7}{16}$	$\frac{9}{16}$	0.70
M20	3826	125	59	14	0.32

FIG. 38CT – HANGER ADJUSTER FOR COPPER TUBING

ROD SIZE	MAX LOAD	A	B	C	WEIGHT EACH
$\frac{3}{8}$	610	3 $\frac{13}{16}$	1¾	1 $\frac{13}{32}$	0.28
M10	2714	97	48	10	0.13
$\frac{1}{2}$	710	3 $\frac{13}{16}$	1 $\frac{13}{16}$	1 $\frac{13}{32}$	0.31
M12	3158	97	46	10	0.14

DIMENSIONS		TEMPERATURE	LOADS	WEIGHT
INCHES	MILLIMETERS	FAHRENHEIT	POUNDS	POUNDS
		CELSIUS	NEWTONS	KILOGRAMS