

PIPE ATTACHMENTS

REFRIGERATION HANGER AND SHIELD

Figure 100SH

This hanger is a combination of the Figure 100 and Figure 265 where the protection shield is welded to the clevis hanger. Designed to support insulated, stationary lines from above and prevent crushing the insulation or breaking the vapor barrier. It allows for approximately 1" to 1½" of vertical adjustment after the pipe is in place. The lower nut (not furnished) adjusts the pipe line to the proper elevation, the top nut (not furnished) prevents loosening due to vibration, and must be tightened securely to assure proper hanger performance.

Material: Carbon Steel.

Compliance: Federal Specification A-A-1192A Type 1, MSS-SP-69 Type 1 and BSPSS-BS3974.

Finish: Plain, Painted, Electro-Galvanized.

Ordering: Specify pipe size, insulation thickness, figure number, and finish. For Metric applications specify Figure M100SH.

Dimensional Data: See Figure 100 and Figure 265P.

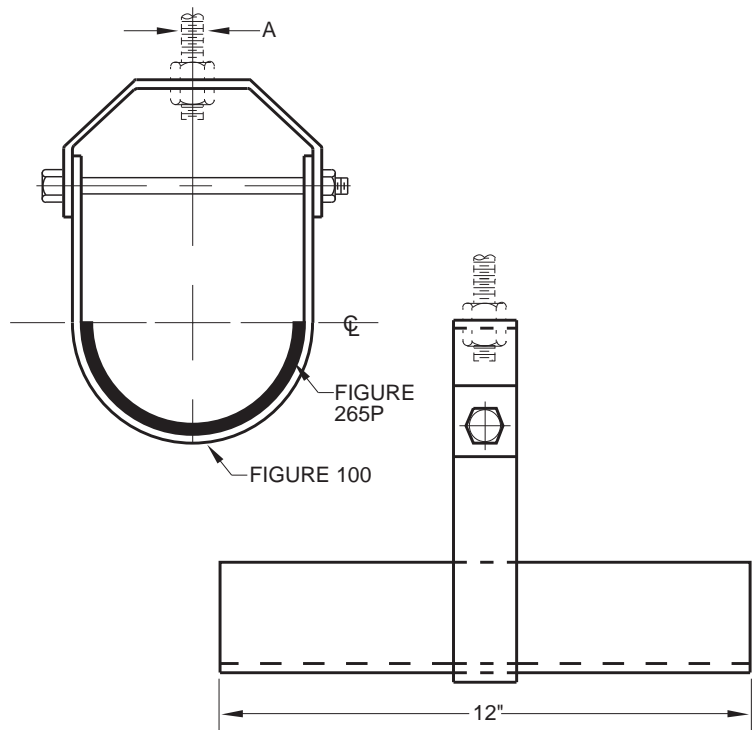


FIGURE 100SH - REFRIGERATION HANGER AND SHIELD

HANGER SIZE	ROD SIZE A	Insulation Thickness					
		½" Cov. 13 Cov. Bare Pipe Size	1" Cov. 25 Cov.	1½" Cov. 38 Cov.	2" Cov. 51 Cov.	2½" Cov. 64 Cov.	3" Cov. 76 Cov.
1½	¾	½					
40	M10	15					
2	¾	¾ - 1					
50	M10	20 - 25					
2½	½	1¼ - 1½	½				
65	M12	32 - 40	15				
3	½	2	¾ - 1				
80	M12	50	20 - 25				
3½	½	2½	1¼ - 1½	½ - ¾			
90	M12	65	32 - 40	15 - 20			
4	¾	3	2	1 - 1¼			
100	M16	80	50	25 - 32			
5	¾	3½ - 4	2½ - 3	1½ - 2	½ - 1¼		
125	M16	90 - 100	65 - 80	40 - 50	15 - 32		
6	¾	5	3½ - 4	2½ - 3	1½ - 2	½ - 1¼	
150	M20	125	90 - 100	65 - 80	40 - 50	15 - 32	
7	¾	6	5	3½ - 4	2½ - 3	1½ - 2	½ - 1¼
M20	150	125	90 - 100	65 - 80	40 - 50	15 - 32	
8	¾		6	5	3½ - 4	2½ - 3	1½ - 2
200	M20		150	125	90 - 100	65 - 80	40 - 50
10	¾	8	8	6	5 - 6	3½ - 4	2½ - 4
250	M22	200	200	150	125 - 150	90 - 100	65 - 100
12	¾	10	10	8	8	5 - 6	5 - 6
300	M22	250	250	200	200	125 - 150	125 - 150
14	1	12		10		8	
350	M24	300		250		200	
16	1	14	12 - 14	12	10	10	8
400	M24	350	300 - 350	300	250	250	200
18	1	16	16	14	12 - 14	12	10
450	M24	400	400	350	300 - 350	300	250
20	1¼			16	16	14	12 - 14
500	M30			400	400	350	300 - 350
24	1¼					16	16
600	M30					400	400

DIMENSIONS		TEMPERATURE	LOADS	WEIGHT
INCHES	FARENHEIT		POUNDS	POUNDS
MILLIMETERS	CELSIUS		NEWTONS	KILOGRAMS