

# STRUCTURE ATTACHMENTS

## WELDING LUG

**Figure 220**

The Figure 220 is to be welded to the underside of structural members for the support of Type C Variable Springs, and with the Figure 276P Forged Steel Clevis with Pin.

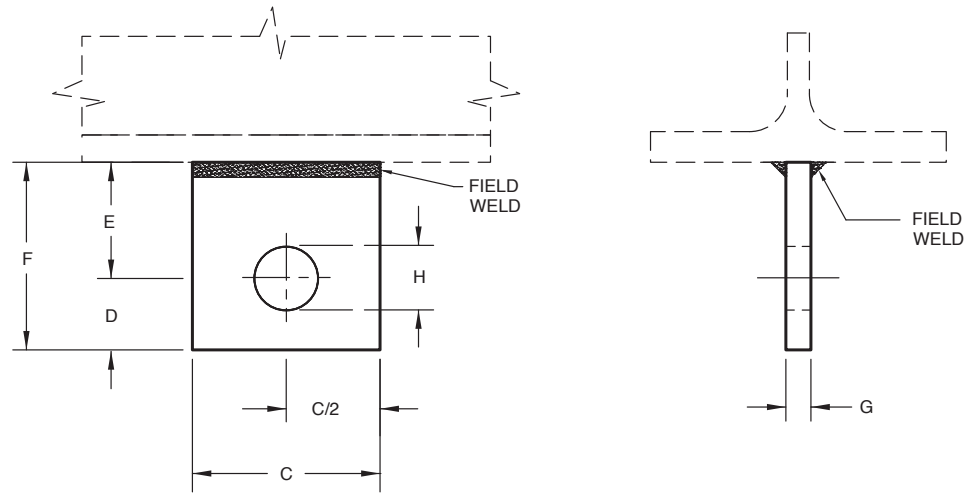
**Material:** Carbon Steel

**Maximum Temperature:** 650°F

**Compliance:** A-A-1192A (Type 57) and MSS SP-58 (Type 57)

**Finish:** Plain, Painted, and Hot-Dip Galvanized

**Ordering:** Specify figure number, size and finish.



**FIGURE 220 – WELDING LUG**

SIZE	BOLT OR PIN SIZE	MAXIMUM LOAD	C	D	E	F	G	H	WEIGHT EACH
3/8	1/2	730	2 1/2	1 1/4	3	4 1/4	1/4	9/16	0.74
M10	M12	3247	64	32	76	108	6	14	0.34
1/2	5/8	1350	2 1/2	1 1/4	3	4 1/4	1/4	1 1/16	0.75
M12	M16	6005	64	32	76	108	6	17	0.34
5/8	3/4	2160	2 1/2	1 1/4	3	4 1/4	1/4	1 3/16	0.68
M16	M20	9609	64	32	76	108	6	21	0.31
3/4	7/8	3230	2 1/2	1 1/4	3	4 1/4	3/8	1 5/16	1.00
M20	M20	14368	64	32	76	108	10	24	0.45
7/8	1	4480	2 1/2	1 1/4	3	4 1/4	3/8	1 1/8	0.98
M20	M24	19929	64	32	76	108	10	29	0.44
1	1 1/8	5900	3	1 1/2	3	4 1/2	1/2	1 1/4	1.60
M24	M30	26246	76	38	76	114	13	32	0.73
1 1/4	1 3/8	9500	4	2	4	6	5/8	1 1/2	3.70
M30	M36	42260	102	51	102	152	16	38	1.68
1 1/2	1 5/8	13800	5	2 1/2	4 1/2	7	3/4	1 3/4	6.40
M36	M42	61388	127	64	114	178	19	44	2.90
1 3/4	1 7/8	18600	5	2 1/2	4 1/2	7	3/4	2	6.30
M42	M48	82740	127	64	114	178	19	51	2.86
2	2 1/4	24600	6	3	4 1/2	7 1/2	3/4	2 3/8	7.20
M48	M56	109431	152	76	114	191	19	60	3.27
2 1/4	2 1/2	32300	6	3	4 1/2	7 1/2	3/4	2 5/8	7.60
M56	M64	143683	152	76	114	191	19	67	3.45
2 1/2	2 3/4	39800	8	4	4 1/2	8 1/2	1	2 7/8	15.5
M64	M72	177046	203	102	114	216	25	73	7.03
2 3/4	3	49400	8	4	4 1/2	8 1/2	1	3 1/8	15.1
M72	M80	219751	203	102	114	216	25	79	6.85
3	3 1/4	60100	8	4	5	9	1	3 3/8	16.0
M80	M80	267349	203	102	127	229	25	86	7.26
3 1/4	3 1/2	71900	9	4 1/2	5	9 1/2	1	3 5/8	18.9
M80	M90	319840	229	114	127	241	25	92	8.57
3 1/2	3 3/4	84700	9	4 1/2	6	10 1/2	1 1/2	3 7/8	31.3
M90	M100	376779	229	114	152	267	38	98	14.20
3 3/4	4	98500	9	5	6	11	1 3/4	4 1/8	35.9
M95	M125	438167	229	127	152	279	44	105	16.28

DIMENSIONS		TEMPERATURE	LOADS	WEIGHT
INCHES	FAHRENHEIT	POUNDS	POUNDS	
MILLIMETERS	CELSIUS	NEWTONS	KILOGRAMS	