

ANCHOR BOLT

Figure 177

The Figure 177 is designed to be embedded into concrete. Made special to customer order. Are available in other diameters and lengths.

Material: Carbon Steel

Finish: Plain, Painted, Electro-Galvanized, Hot-Dip Galvanized.

Ordering: Specify rod size, length, thread length “E”, figure number, and finish. For Metric applications specify Figure M177.

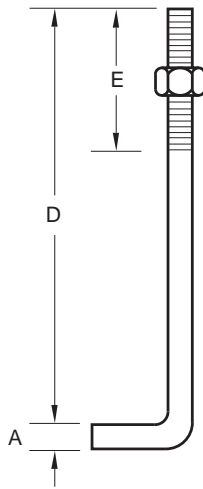


FIGURE 177 – ANCHOR BOLT

ROD SIZE A	WEIGHT EACH LENGTH - DIMENSION “D”			
	6	8	10	12
3/8	0.28	0.34	0.40	0.46
M10	0.13	0.15	0.18	0.21
1/2	0.52	0.63	0.74	0.85
M12	0.24	0.29	0.34	0.39
5/8	0.81	0.99	1.16	1.34
M16	0.37	0.45	0.53	0.61
3/4	1.19	1.44	1.69	1.94
M20	0.54	0.65	0.77	0.88
7/8	1.5	1.9	2.2	2.60
M22	0.68	0.86	1.00	1.18
1	2.0	2.4	2.9	3.30
M24	0.91	1.09	1.32	1.50

WELDING CLEVIS ATTACHMENT

Figure 216

The Figure 216 is an assembly of the Figure 220 and Figure 276P for ordering convenience.

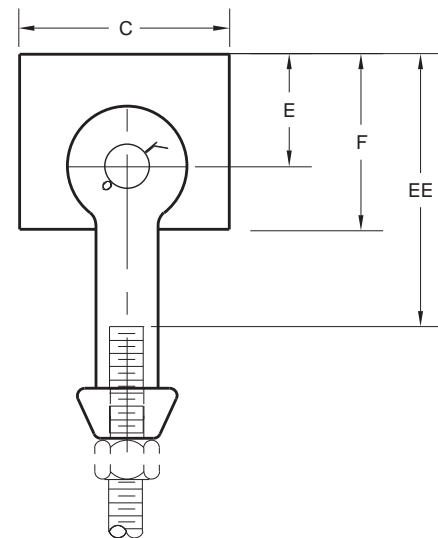
Material: Steel.

Finish: Plain, Painted, Electro-Galvanized, Hot-Dip Galvanized.

Ordering: Specify rod size, figure number, and finish. For Metric applications specify Figure M216.

FIGURE 216 – WELDING CLEVIS ATTACHMENT

ROD SIZE	C	E	EE	F	WGT. EACH
1/2	2 1/2	3	6 1/2	4 1/4	1.7
M12	64	76	165	108	0.7
3/8	2 1/2	3	6 1/2	4 1/4	1.6
M16	64	76	165	108	0.7
3/4	2 1/2	3	7	4 1/4	4.0
M20	64	76	178	108	1.8
5/8	2 1/2	3	7	4 1/4	4.4
M22	64	76	178	108	2.0
1	3	3	8	4 1/2	6.7
M24	76	76	203	114	3.0
1 1/4	4	4	9	6	9.2
M30	102	102	229	152	4.2
1 1/2	5	4 1/2	10 1/2	7	14.9
M36	127	114	267	178	6.8
1 3/4	5	4 1/2	10 1/2	7	19.2
M42	127	114	267	178	8.7
2	6	4 1/2	11 1/2	7 1/2	30.5
M48	152	114	292	191	13.8
2 1/4	6	4 1/2	12 1/2	7 1/2	42.7
M56	152	114	318	191	19.4
2 1/2	8	4 1/2	12 1/2	8 1/2	51.5
M64	203	114	318	216	23.4



DIMENSIONS		TEMPERATURE	LOADS	WEIGHT
INCHES	FAHRENHEIT	POUNDS	POUNDS	
MILLIMETERS	CELSIUS	NEWTONS	KILOGRAMS	