

## PIPE ATTACHMENTS

### TWO BOLT PIPE CLAMP

**Figure 175**  
**Figure 175SP**

Designed to suspend cold or hot pipe lines where little or no insulation is required. The Figure 175 is usually used with a Figure 279 Weldless Eynut, or Figure 93 Welded EyeroD. See Figure 298 Heavy Duty Two Bolt Clamp when higher loads are required. We will also design to meet special requirements such as special pipe sizes, order Figure 175SP.

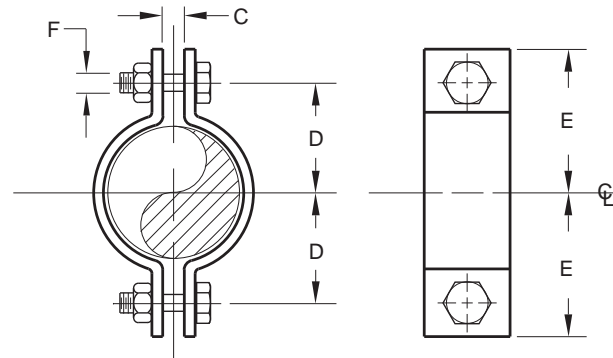
Rated Loads are for up to 750° F (399° C).

**Material:** Carbon Steel.

**Compliance:** Federal Specification A-A-1192A Type 4, MSS-SP-69 Type 4 and BSPSS-BS3974.

**Finish:** Plain, Painted, Electro-Galv., Hot-Dip Galv.

**Ordering:** Specify figure number, finish and pipe size. Also, include any special requirements for Figure 175SP. For Metric applications specify Figure M175 or M175SP.



**FIGURE 175 – TWO BOLT PIPE CLAMP**

PIPE SIZE	MAXIMUM LOAD		C	ROD TAKE OUT D	E	F	WEIGHT EACH
	650° F / 343° C	750° F / 343° C					
1/2	500	445	3/8	1 1/8	1 5/8	5/16	0.31
15	2224	1980	10	29	41	M8	0.14
3/4	500	445	3/8	1 1/4	1 3/4	5/16	0.35
20	2224	1980	10	32	44	M8	0.16
1	500	445	3/8	1 3/8	1 7/8	5/16	0.39
25	2224	1980	10	35	48	M8	0.18
1 1/4	500	445	3/8	1 5/8	2 1/8	5/16	0.40
32	2224	1980	10	41	54	M8	0.18
1 1/2	800	715	3/8	1 3/4	2 1/4	5/16	0.45
40	3559	3181	10	44	57	M8	0.20
2	1040	930	1/2	2 1/8	2 5/8	1/2	1.23
50	4626	4137	13	54	67	M12	0.56
2 1/2	1040	930	5/8	2 5/8	3 1/8	1/2	1.33
65	4626	4137	16	67	79	M12	0.60
3	1040	930	5/8	3	3 1/2	1/2	1.53
80	4626	4137	16	76	89	M12	0.69
4	1040	930	3/4	3 5/8	4 3/8	1/2	2.20
100	4626	4137	19	92	111	M12	1.00
5	1040	930	3/4	4 1/4	5	1/2	2.39
125	4626	4137	19	108	127	M12	1.08
6	1615	1440	7/8	5 1/4	6 1/4	1/2	5.87
150	7184	6406	22	133	159	M12	2.66
8	1615	1440	1	6 3/8	7 3/8	3/4	6.95
200	7184	6406	25	162	187	M20	3.15
10	2490	2220	1	7 5/8	8 3/4	7/8	14.39
250	11077	9875	25	194	222	M22	6.53
12	2490	2220	1	8 3/4	10 1/4	7/8	16.73
300	11077	9875	25	222	260	M22	7.59
14	2490	2220	1 1/8	9 1/4	10 5/8	7/8	21.26
350	11077	9875	29	235	270	M22	9.64
16	2490	2220	1 1/8	10 1/4	11 5/8	7/8	23.39
400	11077	9875	29	260	295	M22	10.61
18	3060	2730	1 1/4	11 5/8	13	1	32.96
450	13612	12144	32	295	330	M24	14.95
20	3060	2730	1 3/8	12 3/4	14 1/8	1 1/8	36.74
500	13612	12144	35	324	359	M30	16.67
24	3060	2730	1 1/2	15 1/4	16 7/8	1 1/4	52.96
600	13612	12144	38	387	429	M30	24.02
30	3500	3360	2	18 1/2	20 3/4	1 1/2	103.50
750	15569	14947	51	470	527	M36	46.95

DIMENSIONS	TEMPERATURE	LOADS	WEIGHT
INCHES	FAHRENHEIT	POUNDS	POUNDS
MILLIMETERS	CELSIUS	NEWTONS	KILOGRAMS