

TOP OR SIDE BEAM CLAMP

Figure 18

The Figure 18 clamp is made in two parts. When bolted together they prevent the movement of the clamp from its position. The supporting rod is installed close to the flange of the beam.

Material: Carbon Steel.

Compliance: Federal Spec. A-A-1192A Type 25, MSS-SP-69 Type 25.

Finish: Plain, Painted, Electro-Galvanized, Hot-Dip Galvanized.

Ordering: Specify clamp number, width of flange, thickness of flange, figure number, and finish. For Metric applications specify Figure M18.

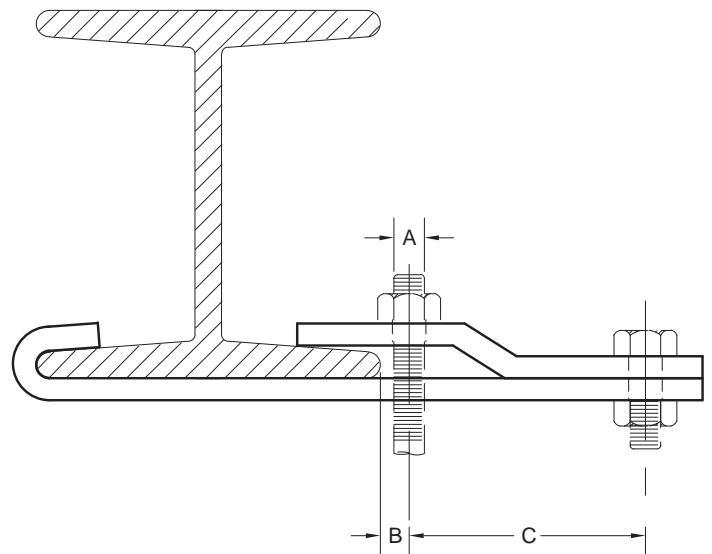


FIGURE 18 – TOP OR SIDE BEAM CLAMP

CLIP NO.	MAXIMUM LOAD	ROD SIZE A	B	C	WEIGHT EACH WIDTH OF I BEAM FLANGE			
					4 102	6 152	8 203	12 305
1	300	3/8	5/16	1 3/4	0.92	1.04	1.12	1.45
1	1335	M10	7.9	44	0.42	0.47	0.51	0.66
2	500	1/2	3/8	2 1/4	1.39	1.56	1.66	2.11
2	2224	M12	9.5	57	0.63	0.71	0.75	0.96
3	700	5/8	7/16	2 1/2	2.53	2.81	2.98	3.72
3	3114	M16	11.1	64	1.15	1.27	1.35	1.69
4	1000	3/4	1/2	2 3/4	3.90	4.32	4.57	5.62
4	4448	M20	12.7	70	1.77	1.96	2.07	2.55
5	2000	7/8	5/16	3 1/2	7.35	8.08	8.48	10.13
5	8897	M22	14.3	89	3.33	3.67	3.85	4.59

DIMENSIONS		TEMPERATURE	LOADS	WEIGHT
INCHES	FAHRENHEIT	POUNDS	POUNDS	
MILLIMETERS	CELSIUS	NEWTONS	KILOGRAMS	