

PIPE ROLLS

CHAIR AND ROLL

Figure 17

The Figure 17 is designed for longitudinal movement of pipe where vertical adjustment is not required.

Material: Cast Iron Pipe Roll and Chair with Carbon Steel Axle. Use a Figure 39 when a Carbon Steel Chair is required. Do not exceed 450° F / 232° C at the contact point to the roll.

Compliance: Federal Specification A-A-1192A Type 44, MSS-SP-69 Type 44.

Finish: Plain, Painted, Hot-Dip Galvanized

For pipe with insulation and a pipe covering protection saddle the Figure 17 will have to be oversized to suit. Please see the Table on page 62 showing the correct sizing for insulated pipe.

Ordering: Specify chair number, figure number, and finish. For Metric applications specify Figure M17.

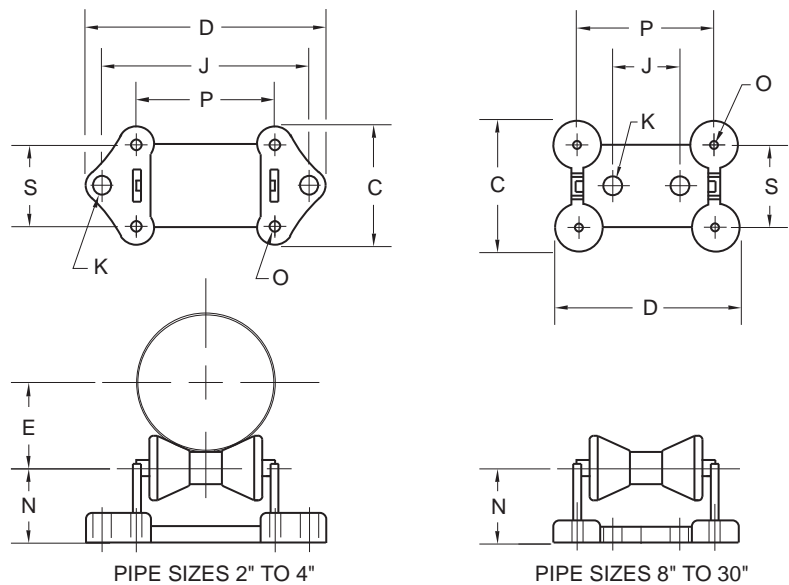


FIGURE 17 – CHAIR AND ROLL

CHAIR NO.	MAX LOAD	BARE PIPE SIZE	C	D	E	J	K	N	O	P	S	WGT. EA.
1A	390	2 2½ 3 3½	5¾	8½	1½ 1¾ 2½ 2¾	6½	1	2	7/16	3½	4/8	7.0
1A	1735	50 65 80 90	146	216	38 44 64 70	165	25	51	11	89	105	3.2
1	950	4 5 6	5¾	10⅞	2¾ 3⅞ 3⅞	8	1	2⅜	9/16	4¾	4/4	10.5
1	4226	100 125 150	146	257	70 86 98	203	25	60	14	121	108	4.8
2	2100	8 10	6⅞	8⅞	5⅞ 6¼	4	7/8	3¾	5/8	7	5	16.5
2	9342	200 250	175	225	130 159	102	22	95	16	178	127	7.5
3	3075	12 14	7⅞	11	7⅞ 8	5¾	7/8	4¾	9/16	9¼	6	26.8
3	13679	300 350	200	279	187 203	146	22	121	14	235	152	12.2
4	4980	16 18 20	8¾	12½	8⅞ 10 11	6¾	1	4⅞	¾	10¼	6½	40.5
4	22153	400 450 500	222	318	225 254 279	171	25	117	19	260	165	18.4
5	6100	24	8⅞	13¾	13	7½	1	4¾	13/16	11½	6¾	51.0
5	27135	600	225	349	330	191	25	121	21	292	171	23.1
6	7500	30	10¾	17¼	16¼	10	1	5⅝	1	14⅜	8	89.8
6	33363	750	273	438	413	254	25	143	25	365	203	40.7
7	12000	36 42	12	18¾	20 23⅞	12	1	5¾	15/16	17	9	152
7	53381	900 1050	305	476	508 587	305	25	146	33	432	229	68.9

DIMENSIONS		TEMPERATURE	LOADS	WEIGHT
INCHES	FAHRENHEIT		POUNDS	POUNDS
MILLIMETERS	CELSIUS		NEWTONS	KILOGRAMS